

SONIC

BY VENTURE RV

Travel Trailers



Living Room/Kitchen

- Roller Ball Bearing Drawer Guides
- Safe-Tek® Box
- Double Bowl Sink w/Sink Cover
- Bluetooth DVD/CD/MP3/AM/FM Stereo
- LED Lights
- Flipside Reversible Cushions
- Mocha Latte Mosaic Backsplash
- Cognac Maple Color Cabinet Wood
- (2) Interior Speakers
- 82" Interior Height
- Skylight
- Designer Carefree® Linoleum w/3-Year Warranty

Appliances

- 6.3 CU FT Double Door Refrigerator/Freezer
- 6-GAL DSI Quick Recovery Water Heater
- 2-Burner Cooktop w/Glass Cover
- Vented Range Hood w/Light

Bath

- Residential Radius Shower w/Glass Doors (most models)
- LED Lights
- Foot-Flush Toilet
- Medicine Cabinet
- Power Vent

Bedroom

- Innerspring Mattress
- Designer Valances
- Pleated Nightshades
- Designer Padded Headboard w/Storage
- Quilted Reversible Comforter
- Overhead Storage
- Under-Bed Storage
- LED Lights
- Two Shirt Closets (most Models)

Exterior/Construction Features

- One Piece Seamless Fiberglass Roof
- Diamond Plate Rock Guard
- EZ Exchange® (2) 20 LB Tanks w/Auto Changeover

- Large Pass-Thru Storage
- Slam Latch Baggage Doors
- Wide-Trek® Axles
- Lighted Double Safety Step
- Norco BAL® E-Coated & Epoxy-Painted Huck Bolted Frame
- Motorhome-Style Grab Handle w/Light
- Champagne Infused Fiberglass Walls & Roof
- Exterior Shower w/Hot & Cold Water
- Tinted Safety Glass Windows
- Exterior LED Lighting
- Laminated Sidewalls w/Aluminum Framing
- (2) Marine Grade Exterior Speakers
- Bumper w/Sewer Hose Storage
- Satellite & Cable Hookup
- Porch Light
- Water Heater Bypass Valve
- Marine-Style Detachable Power Cord w/Light
- Tank Monitor System
- (4) Secure Stance® Angled Stabilizer Jacks
- Prewire Zamp® Solar

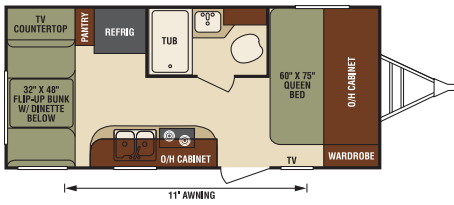
- Prewire for Backup Camera

Options

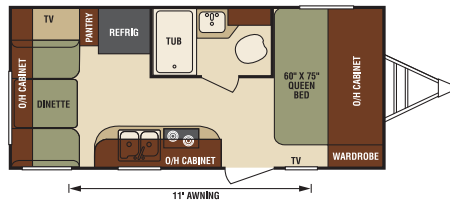
- 15,000 BTU A/C
- 13,500 BTU A/C
- Hide-a-Bed & Sofa w/Memory Foam Mattress (most models)
- Sleep Tight® Gel-Infused Memory Foam Mattress
- Aussie® Outside Grill
- Multi-Directional LED Lighted Power Awning
- LED TV w/Swing Arm Bracket
- High-Polished Aluminum Rims
- Convection Microwave
- Microwave
- Enclosed Heated Fresh Water Tank
- Lighted Power Tongue Jack w/Level
- Lightweight Package for 170 only (8,000 BTU A/C, 4 CU FT Fridge)

Highway Package

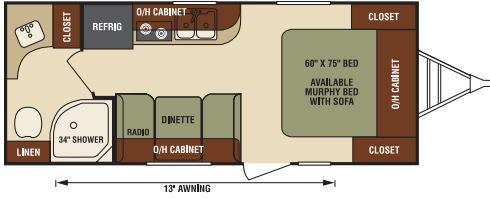
- Black Tank Flush
- Spare Tire, Carrier & Cover
- LP Bottle Cover
- Outside Shower



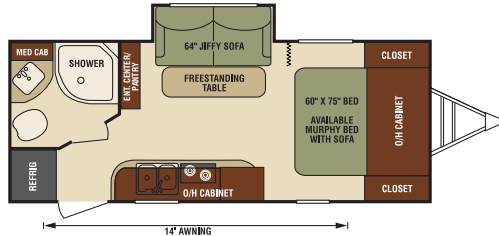
SN170VBH



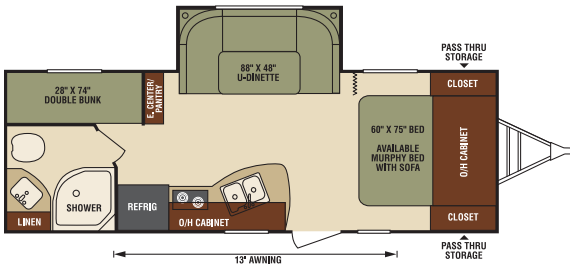
SN170VRD



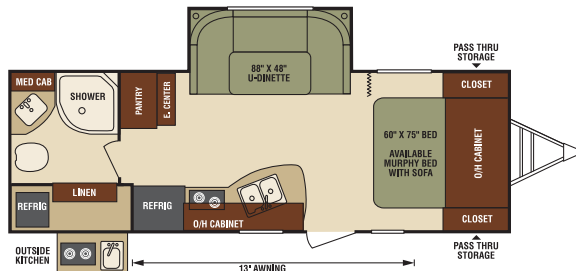
SN190VRB



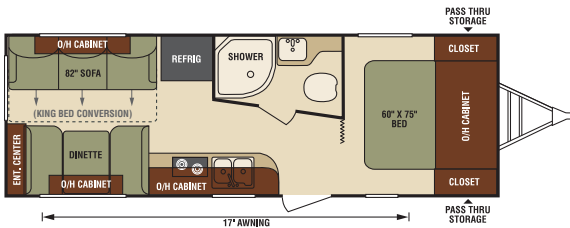
SN200VML



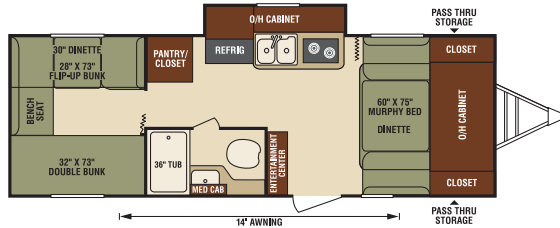
SN220VBH



SN220VRB



SN230VRL **NEW**

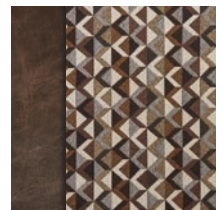


SN234VBH **NEW**

2016 Décor



Black Diamond



Summit

Travel Trailers

	SN170VBH	SN170VRD	SN190VRB	SN200VML	SN220VBH	SN220VRB	SN230VRL	SN234VBH
UVW (Unloaded Vehicle Weight)*	3,320	3,260	3,530	3,760	4,200	4,380	3,967	4,220
Dry Hitch Weight*	350	340	330	310	390	420	524	610
Dry Axle Weight*	2,970	2,920	3,200	3,450	3,810	3,960	3,443	3,610
NCC (Net Carrying Capacity)	680	740	970	1,040	1,000	1,440	1,233	980
GVWR	4,000	4,000	4,500	4,800	5,200	5,400	5,200	5,200
Interior Height	82"	82"	82"	82"	82"	82"	82"	82"
Exterior Height with A/C	10' 3"	10' 3"	10' 3"	10' 3"	10' 3"	10' 3"	10' 3"	10' 3"
Exterior Width	90"	90"	90"	90"	90"	90"	90"	90"
Exterior Length	21'	21'	22' 10"	23' 4"	26' 5"	26' 11"	26' 9"	26' 5"
Refrigerator (Cubic Feet)	6	6	6	6	6	6	6	6
Water Heater Cap. (Gal. G/E w/DSI)	6	6	6	6	6	6	6	6
Fresh Water Capacity (Gallon)	40	40	39	39	39	39	39	39
Black Water Capacity (Gallon)	30	30	30	30	30	30	30	30
Gray Water Capacity (Gallon)	30	30	30	30	30	30	30	30
LP Gas Capacity (Lbs.)	40	40	40	40	40	40	40	40
Furnace BTUs (1,000s - OPTIONAL)	20	20	20	20	20	20	20	20
Tire Size	14"	14"	14"	14"	14"	14"	14"	14"
Awning	11'	11'	13'	14'	13'	13'	17'	14'

*This weight reflects the rolling average unit weight for each model. Your trailer weight will vary according to optional equipment.



985 N 900 W • Shipshewana, IN 46565
www.venture-rv.com

Due to continual research and advances, manufacturer reserves the right to change specifications, design, price and equipment without notice, and assumes no responsibility for any error in this literature. Some items shown are not included as standard or optional equipment. ©2015 Venture | 9/2/15 | 10M