

SPORTTREK

TOURING EDITION

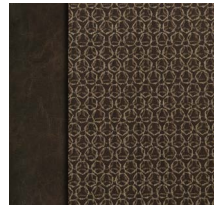
Travel Trailers



2017 Décor



Black Diamond



Brownstone

Living Room/Kitchen

- Solid Surface Countertops w/Sink Covers
- Bluetooth DVD/CD/MP3/AM/FM Stereo w/Remote
- Designer Carefree® Residential Freeze/Crack-proof Linoleum w/3 Year Warranty
- Panoramic Slideout Windows
- Undermount 50/50 Stainless Steel Sink
- Skylight w/Shade
- Tilt-Out Utility Tray
- Full-Extension Ball Bearing Drawer Guides
- Comfort by Design® Grand Dinette w/Reversible Cushions (floorplan specific)
- Overhead Cabinet Storage in Slideout
- Flush-Mount Interior Speakers
- Table & 4 Chairs (Std. on STT333VFL, STT336VRK & STT343VIK)
- Islands Feature Hidden Wine Rack

Bath

- Skylight
- Porcelain Foot-Flush Toilet
- Mirrored Medicine Cabinet
- Radius Shower w/Glass Doors
- Power Vent
- Linen Closet (floorplan specific)

Bedroom

- Sleep Tight® Memory Foam Mattress
- Pillow Shams
- Reversible Residential Quilted Comforter

- Teddy Bear® Bunk Mattress(s) (floorplan specific)
- Solid Wood Nightstands (floorplan specific)
- USB/110V Outlet Above Bed
- Overhead Cabinets
- Large Shirt Closet w/Built-In Shelf
- (2) Gas Struts for Under-Bed Storage
- Solid Wood Privacy Door(s)
- TV & Satellite Connections

Exterior/Construction Features

- 4-Independent Power Jacks w/Relay
- EZ Access® LP Tank Cover
- EZ Exchange® (2) 20 LB LP Tanks w/Auto Changeover
- Large Pass-Thru Storage Doors (cooler-sized)
- Wide-Trek® Axles
- Self-Adjusting Brakes
- Under Shield® Heated & Enclosed Underbelly
- BAL® E-Coated & Epoxy-Painted Huck Bolted Frame
- Deep Slides w/Colored Slideout Ends
- Exterior Shower w/Hot & Cold Water
- (4) Ground Effect Blue LED Lights
- Digital Antenna Receiver
- Keyed Alike Key System
- 50 Amp Service w/2nd A/C Prep
- Large Assist Grab Handle
- Cable/Satellite Connection (2 locations)
- 5/8" Tongue & Groove Plywood Floor
- Walkable Roof
- (2) Marine-Grade Exterior Speakers
- Alpha Superflex® Roof Material

- Gutter w/Downspouts
- Gutters above Slideouts

Touring Package (Mandatory)

- 8 CU FT Refrigerator
- Safety Tek® Charging Center
- Tri-Fold Sleeper Sofa in Main Slideout (floorplan specific)
- Power Tongue Jack
- Solar Prep Package
- (4) Electric Stabilizer Jacks w/Independent Motors
- LED Lighted Pass-Thru Storage
- 15,000 BTU A/C
- Spare Tire & Carrier
- Microwave
- 6 GAL Gas/Electric/DSI Water Heater
- Multi-Directional LED Awning(s) w/Light
- Pearl Fiberglass
- Cargo Bike Rack (prep)
- Backup Camera Prep

Exterior Luxury Package (Mandatory)

- Painted Front Cap w/Integrated LED Lighting & Rock Guard Paint
- 15" Radial Tires w/High-Polished Aluminum Rims
- Slam-Latch Baggage Doors w/Magnetic Catches
- Upgraded Graphics Package
- Black Tank Flush System
- Tinted Frameless Windows
- Ladder
- EZ Lube Axles
- Lighted Detachable Power Cord
- Outside Shower w/Hot & Cold Water
- TV Antenna & Cable Hookup

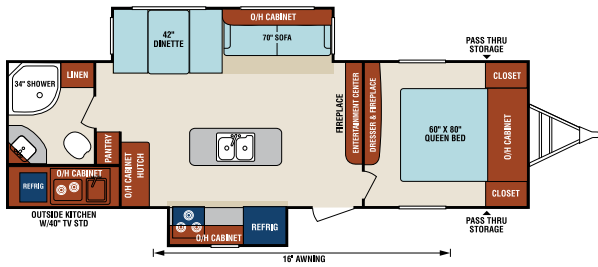
- Spare Tire & Carrier

Interior Luxury Package (Mandatory)

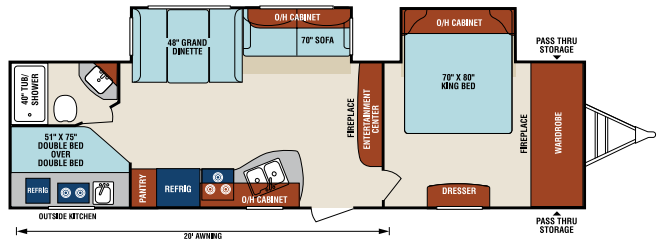
- 82" Interior Ceiling
- Theater Seating (floorplan specific)
- 72" Slide Height
- Hand Glazed Hardwood Cabinet Doors
- Designer Valances w/Fabric Nightshades
- Full-Extension Drawer Guides
- Flush Mount Glass Cooktop
- 3-Burner High-Output Range w/Glass Cover
- 17" Oven
- Wood Plank Lino Flooring
- Residential Carpet
- Radius Shower w/Glass Doors
- Bluetooth CD/DVD/AM/FM Stereo w/Remote
- Lighted Designer Padded Headboard
- High Efficiency LED Lighting
- 2 Fireplaces (Bedroom & Living Room)

Options

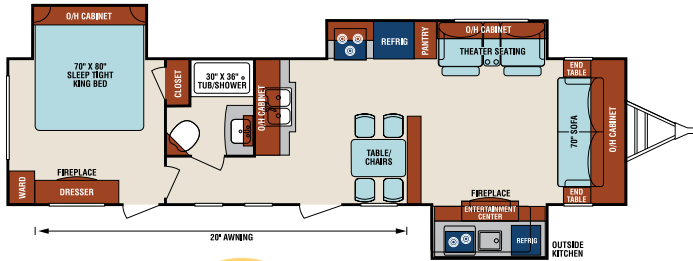
- Flip-Up Cargo Tray
- Sleep Tight® Gel-Infused Memory Foam Mattress
- Table & Chairs (no leaf) (Std. STT336VRK & STT343VIK)
- Maxx-Air® Bedroom Fan
- 39" TV w/Swing Arm Bracket
- Swing Away Bumper Mount Grill
- 48" TV w/Swing Arm Bracket
- MorRyde® Trek Step
- 2nd A/C



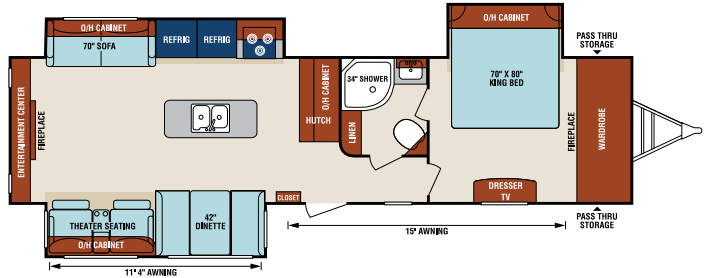
STT280VRB



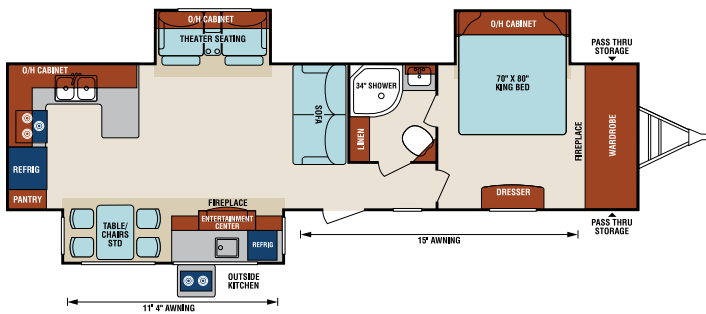
STT302VBH



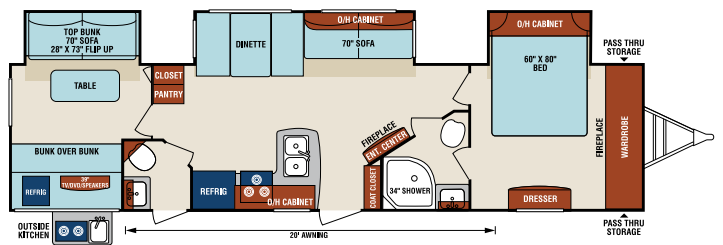
STT333VFL **NEW**



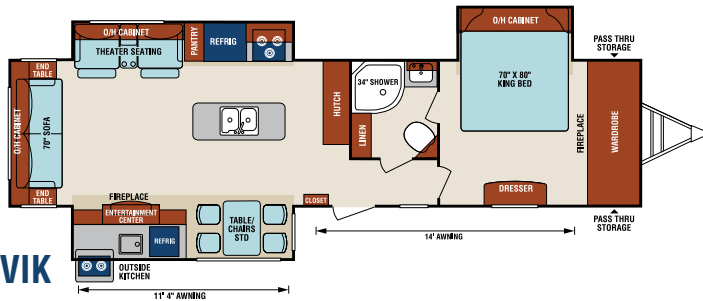
STT334VRE



STT336VRK



STT343VBH **NEW**



STT343VIK

Travel Trailers	STT280VRB	ST302VBH	STT333VFL	STT334VRE	STT336VRK	STT343VBH	STT343VIK
UVW (Unloaded Vehicle Weight)*	7,150	7,290	8,260	8,280	8,290	8,660	8,515
Dry Hitch Weight*	780	960	1,290	990	990	1,070	1,070
Dry Axle Weight*	6,370	6,330	6,970	7,290	7,300	7,590	7,445
NCC (Net Carrying Capacity)	1,150	1,010	1,735	1,715	1,705	1,335	1,480
GVWR	8,300	8,300	9,995	9,995	9,995	9,995	9,995
Interior Height	82"	82"	82"	82"	82"	82"	82"
Exterior Height with A/C	11' 4"	11' 4"	11' 4"	11' 4"	11' 4"	11' 4"	11' 6"
Exterior Width	96"	96"	86"	96"	96"	96"	96"
Exterior Length	32' 3"	34' 5"	36' 11"	37' 6"	36' 6"	37' 11"	37' 8"
Refrigerator (Cubic Feet)	8	8	8	8	8	8	8
Water Heater Capacity (Gal. G/E w/DSI)	6	6	6	6	6	6	6
Fresh Water Capacity (Gallon)	40	40	40	40	40	40	40
Black Water Capacity (Gallon)	32	32	32	32	32	64	32
Gray Water Capacity (Gallon)	64	32	32	32	64	64	32
LP Gas Capacity (Lbs.)	40	40	40	40	40	40	40
Furnace BTUs (1,000s)	25	25	30	30	30	30	30
Tire Size	15"	15"	15"	15"	15"	15"	15"
Awning	16'	20'	20'	15'/11' 4"	15'/11' 4"	20'	14'/11' 4"

*This weight reflects the rolling average unit weight for each model. Your trailer weight will vary according to optional equipment.



985 N 900 W • Shipshewana, IN 46565
www.venture-rv.com

Due to continual research and advances, manufacturer reserves the right to change specifications, design, price and equipment without notice, and assumes no responsibility for any error in this literature. Some items shown are not included as standard or optional equipment. ©2016 Venture | 9/9/16 | 2.5M