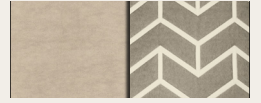


SONIC

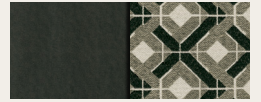
Travel Trailers



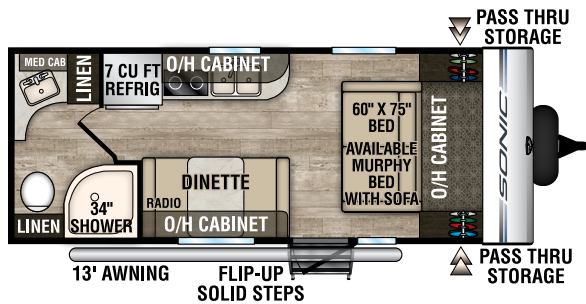
2019 Décor



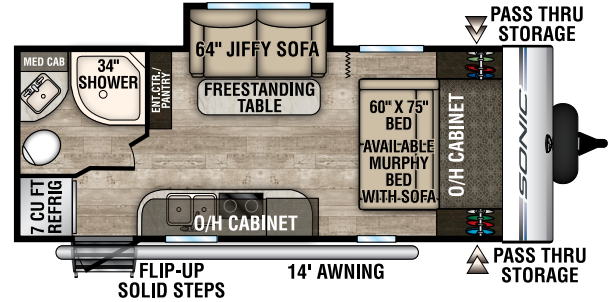
Latte



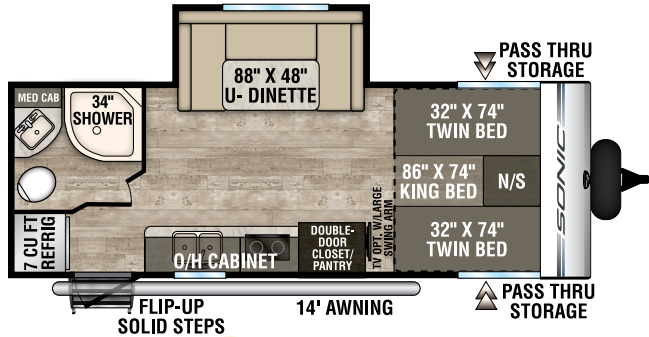
Granite



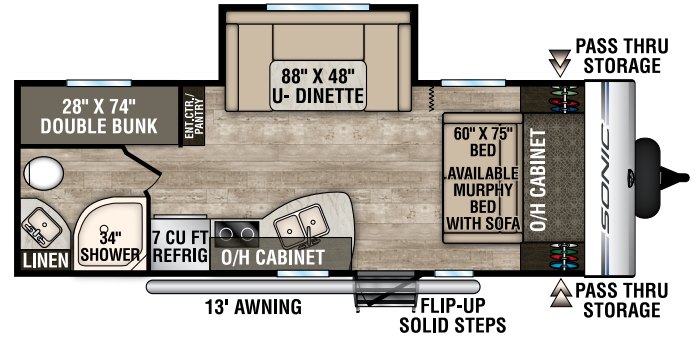
SN190VRB



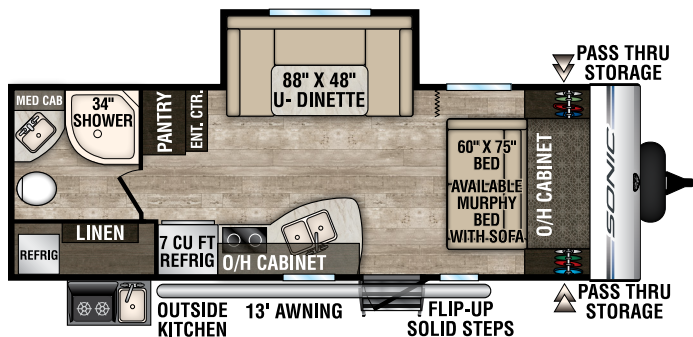
SN200VML



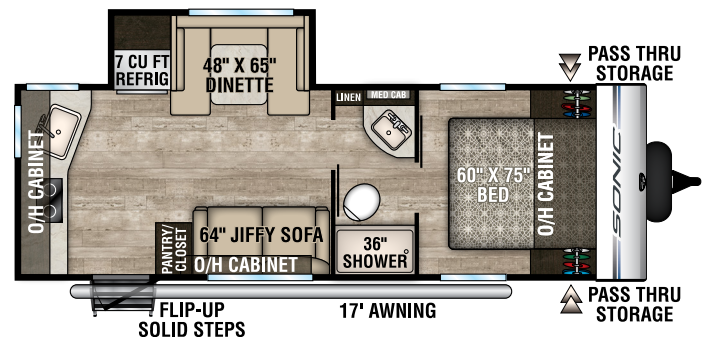
SN210VTB **NEW**



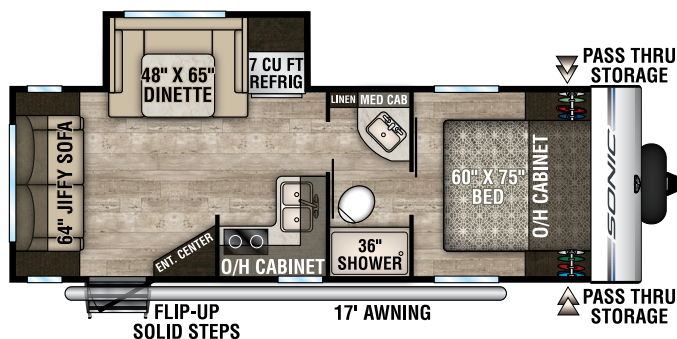
SN220VBH



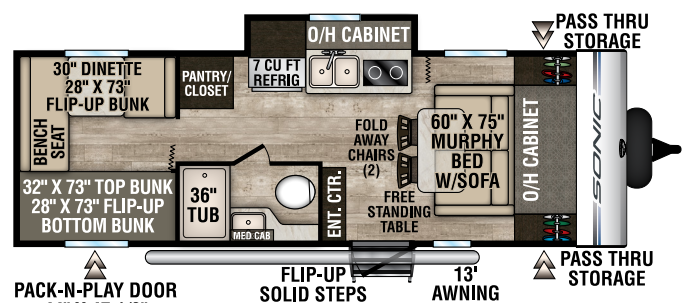
SN220VRB



SN231VRK **NEW**



SN231VRL



SN234VBH

Living Room/Kitchen

- Seamless Countertop w/Sink Cover
- Roller Ball Bearing Drawer Guides
- Large Undermount Stainless Steel Single Bowl Sink
- High Efficiency LED Lights
- Mountain Walnut Cabinets
- (2) Interior Speakers
- Linoleum w/3-Year Warranty

Bath

- Residential Radius Shower w/Glass Doors (most models)
- High Efficiency LED Lights
- Medicine Cabinet

Bedroom

- Foam Mattress
- Designer Valances
- Pleated Nightshades
- Overhead Storage
- Under-Bed Storage
- High Efficiency LED Lights
- USB Charging Port
- Two Shirt Closets

Exterior/Construction Features

- EZ Exchange® (2) 20 LB LP Gas Tanks w/Auto Changeover
- Large Pass-Thru Storage
- Two-Tone White & Grey Fiberglass Walls
- Exterior Shower w/Hot & Cold Water
- Tinted Safety Glass Windows
- High Efficiency Exterior LED Lighting

- Laminated Sidewalls w/Aluminum Framing
- (2) Marine Grade Exterior Speakers
- Porch Light
- Water Heater Bypass Valve
- Power Cord w/Light
- Tank Monitor System

Weather-Shield Package (Mandatory)

- Forced Heat, Enclosed Underbelly & Radiant Foil Barrier

Exterior Package (Mandatory)

- Friction Hinge Entry Door
- Battery Disconnect Switch
- Fender Guards
- Seamless, One Piece Fiberglass Roof
- 5/8" Tongue & Groove Plywood Floor Decking
- Spread Axles w/Auto Adjust Brakes and EZ Lube Hubs
- NXG Huck-Bolt Frame
- Norco BAL® E-Coated & Epoxy-Painted Huck Bolted Frame
- (4) Angled Scissor Jacks w/Foot Pads
- 4" Tube Bumper Sewer Hose Storage
- Prewired for Furrion Solar Panel System
- Prewired for Furrion Backup Camera
- Dedicated Cable and Satellite hookups
- Furrion Marine Grade Detachable Power Cord w/Light

- Slam-Latch Baggage Doors w/ Magnetic Catches
- Motion Lighted Pass-thru Storage
- Hot & Cold Outside Shower
- Keyed-Alike Key System
- Venture Bottle Opener/Doggie Tie Down

Interior Package (Mandatory)

- StorMore Bedside Nightstands
- Tufted Dinette Cushions
- Stainless Steel Accented Appliances
- Designer Backsplash
- Furrion Bluetooth Stereo AM/FM/ DVD/CD/MP3
- 7 CU FT Double Door Refrigerator
- 2-Burner Cooktop w/Flush Glass Cover
- 6-Gal Gas/Electric DSI Water Heater
- Vented Range Hood w/Light
- SafeTek® Box w/110v and USB Charging
- Quilted Comforter
- Designer Padded Headboard w/ Storage
- Linoleum w/3-yr Warranty
- Sky Light in Living Area
- LED Lighting
- 82" Ceiling Height
- Power Exhaust Fan in Bathroom
- Shoe Cubby (F/P specific)
- Surf(x) Seamless Countertops w/ Sink Cover and Tabletops
- Porcelain Foot Flush Toilet

Options

- Convection Microwave
- LED TV w/Swing Arm
- Upgraded Mattress (N/A 234)
- 13,500 A/C
- 15,000 A/C
- Murphy Bed w/Sofa & Upgraded Mattress (Std 234)
- Multi-Directional LED Power Awning
- Lighted Power Tongue Jack
- Swing-Away Bumper Mount Grill
- High Polished Aluminum Rims
- A-Frame Bike Rack
- Furrion Observation/Backup Camera

Highway Package (Option)

- Black Tank Flush
- Spare Tire, Carrier & Cover
- LP Bottle Cover

Discover Package (Option)

- Venture Bottle Opener/Doggie Tie Down
- Undermount Stainless Steel Single Bowl Farmer Sink
- Euro Steel Faucet
- Carbon Fiber Rock Guard & Slide-out End Walls
- Woodgrain Linoleum
- Solid Flip-up Step
- Swing Away Grab Handle
- Screen Shot Spring Screen Door
- Power Tongue Jack
- Aluminum Rims w/Black Accents
- LED Lighted Power Awning

Travel Trailers

	SN190VRB	SN210VTB	SN200VML	SN220VBH	SN220VRB	SN231VRK	SN231VRL	SN234VBH
UVW (Unloaded Vehicle Weight)*	3,530	TBD	3,950	4,200	4,460	4,390	4,340	4,220
Dry Hitch Weight*	330	TBD	310	390	420	300	510	610
Dry Axle Weight*	3,200	TBD	3,450	3,810	3,960	4,000	3,830	3,610
NCC (Net Carrying Capacity)	970	TBD	1,040	1,000	740	800	860	980
GVWR	4,500	TBD	5,200	5,200	5,200	5,200	5,200	5,200
Interior Height	82"	TBD	82"	82"	82"	82"	82"	82"
Exterior Height with A/C	10' 4"	TBD	10' 4"	10' 4"	10' 4"	10' 4"	10' 4"	10' 4"
Exterior Width	90"	TBD	90"	90"	90"	90"	90"	90"
Exterior Length	22' 10"	TBD	23' 4"	26' 5"	26' 11"	26' 9"	26' 9"	26' 5"
Refrigerator (Cubic Feet)	7	7	7	7	7	7	7	7
Water Heater Cap. (Gal. G/E w/DSI)	6	6	6	6	6	6	6	6
Fresh Water Capacity (Gallon)	38	39	38	38	38	38	38	38
Black Water Capacity (Gallon)	30	31	30	30	30	30	30	30
Gray Water Capacity (Gallon)	30	31	30	30	30	60	30	30
LP Gas Capacity (Lbs.)	40	40	40	40	40	40	40	40
Furnace BTUs (1,000s)	20	20	20	20	20	20	20	20
Tire Size	14"	TBD	14"	14"	14"	14"	14"	14"
Awning	13'	14'	14'	13'	13'	17'	17'	13'

*This weight reflects the rolling average unit weight for each model. Your trailer weight will vary according to optional equipment.



985 N 900 W • Shipshewana, IN 46565
www.venture-rv.com

Due to continual research and advances, manufacturer reserves the right to change specifications, design, price and equipment without notice, and assumes no responsibility for any error in this literature. Some items shown are not included as standard or optional equipment. ©2018 Venture | 12/10/18 | 25M