

SONIC

Ultra-Lite Travel Trailers



SONIC

SN231VRK ▼ Latte décor



SONIC

Families on the go want it both ways – maximum towing efficiency, plus uncompromising comfort and style. Sonic delivers; its ultra-lightweight, tandem-axle travel trailers are designed for smaller tow vehicles, yet equipped with upscale amenities usually seen in motorhomes. Livable and surprisingly spacious, Sonic offers 82" ceilings, a residential kitchen and ample storage to keep clutter at bay. Sonic's solid construction offers peace of mind and all the comforts of home.



Sonic's sensible U-shaped dinette doubles as meal space that easily converts to comfy sleeping space. Meanwhile, the corner vanity in some models frees up elbow room in the bath.

The porcelain foot-flush toilet, full bathtub shower and linen closet make this bathroom refreshingly home-like.

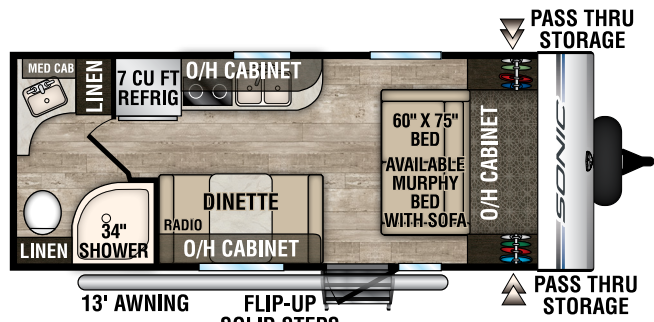


The plush 64" Jiffy sofa (SN231VRK & SN231VRL) seats three adults comfortably, and folds out for added sleep space.

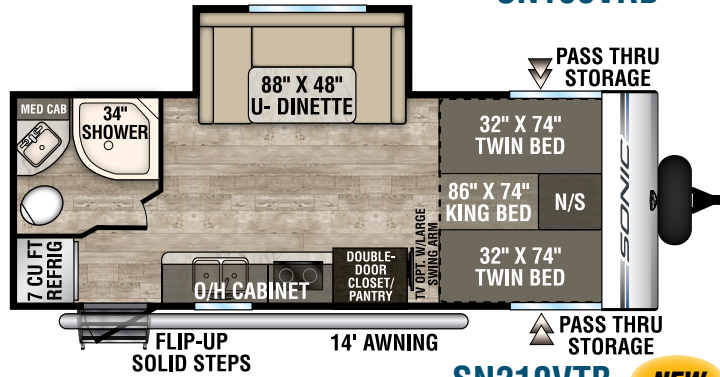


Settle into this stylish couch by day, then deploy the 60" x 75" Murphy bed by night! Storage abounds (there's hidden headboard space with USB charger, 110V outlet and easy access StorMor® shelves for alarm clock, CPAP machine, plus areas above and beside the bed to stash more stuff.)

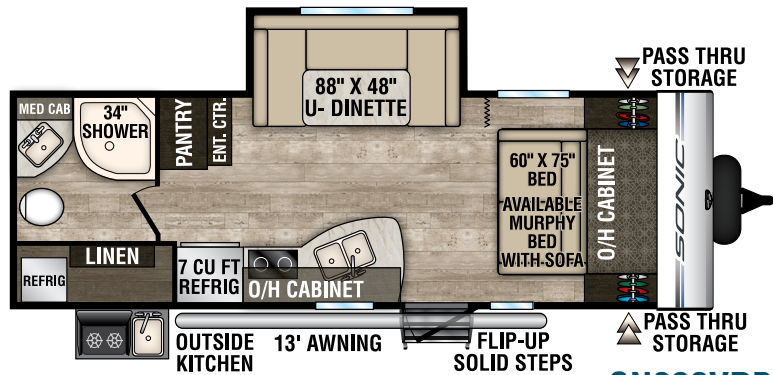




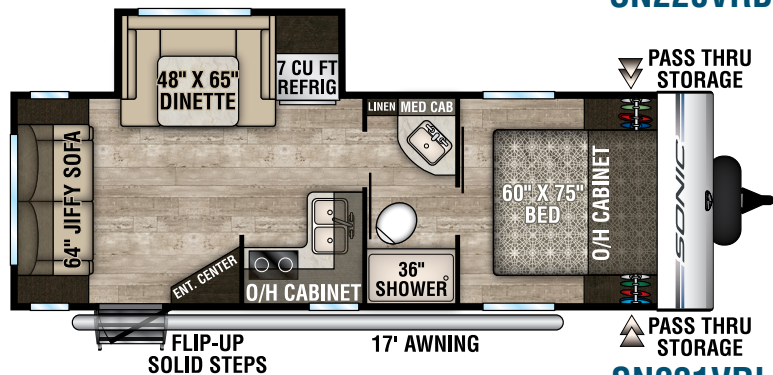
SN190VRB



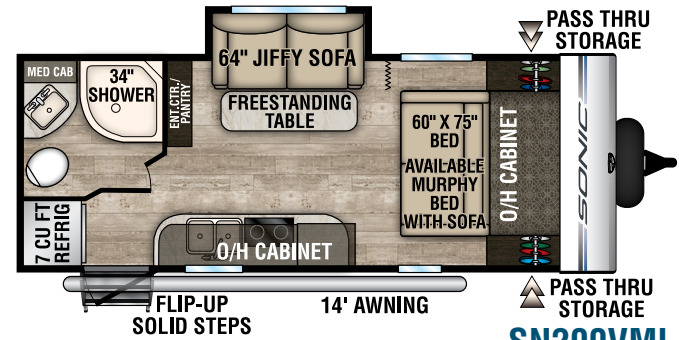
SN210VTB **NEW**



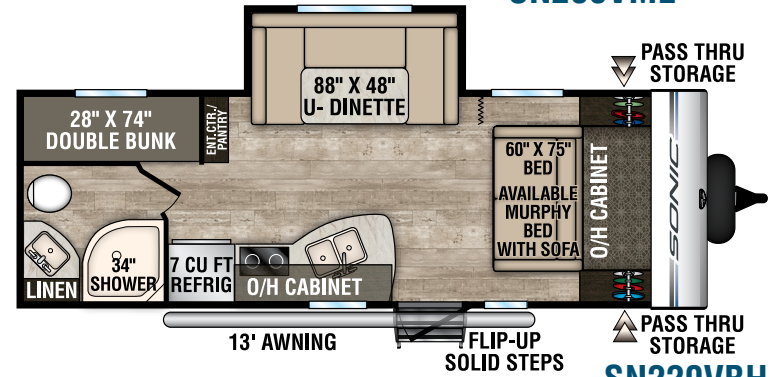
SN220VRB



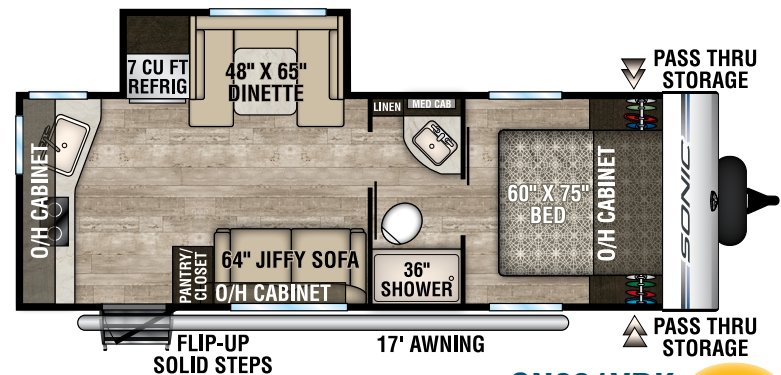
SN231VRL



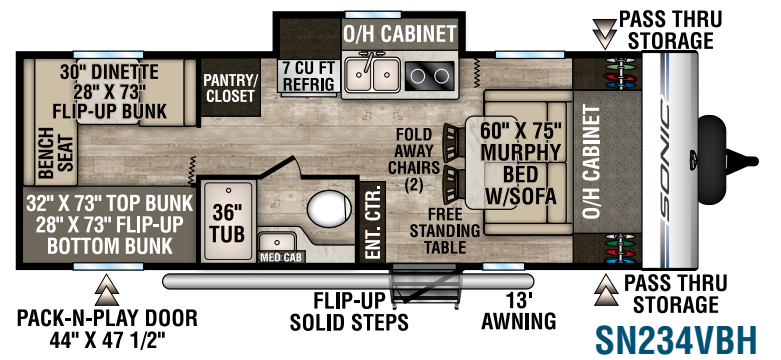
SN200VML



SN220VBH



SN231VRK **NEW**



SN234VBH

Living Room/Kitchen

- Seamless Countertop w/Sink Cover
- Roller Ball Bearing Drawer Guides
- Large Undermount Stainless Steel Single Bowl Sink
- High Efficiency LED Lights
- Mountain Walnut Cabinets
- (2) Interior Speakers
- Linoleum w/3-Year Warranty

Bath

- Residential Radius Shower w/Glass Doors (most models)
- High Efficiency LED Lights
- Medicine Cabinet

Bedroom

- Foam Mattress
- Designer Valances
- Pleated Nightshades
- Overhead Storage
- Under-Bed Storage
- High Efficiency LED Lights
- USB Charging Port

- Two Shirt Closets

Exterior/Construction Features

- EZ Exchange® (2) 20 LB LP Gas Tanks w/Auto Changeover
- Large Pass-Thru Storage
- Two-Tone White & Grey Fiberglass Walls
- Exterior Shower w/Hot & Cold Water
- Tinted Safety Glass Windows
- High Efficiency Exterior LED Lighting
- Laminated Sidewalls w/Aluminum Framing
- (2) Marine Grade Exterior Speakers
- Porch Light
- Water Heater Bypass Valve
- Power Cord w/Light
- Tank Monitor System

Weather-Shield Package (Mandatory)

- Forced Heat, Enclosed Underbelly & Radiant Foil Barrier

Exterior Package (Mandatory)

- Friction Hinge Entry Door
- Battery Disconnect Switch
- Fender Guards
- Seamless, One Piece Fiberglass Roof
- 5/8" Tongue & Groove Plywood Floor Decking
- Spread Axles w/Auto Adjust Brakes and EZ Lube Hubs
- NXG Huck-Bolt Frame
- Norco BAL® E-Coated & Epoxy-Painted Huck Bolted Frame
- (4) Angled Scissor Jacks w/Foot Pads
- 4" Tube Bumper Sewer Hose Storage
- Prewired for Furrion Solar Panel System
- Prewired for Furrion Backup Camera
- Dedicated Cable and Satellite hookups
- Furrion Marine Grade Detachable Power Cord w/Light
- Slam-Latch Baggage Doors w/Magnetic Catches

- Motion Lighted Pass-thru Storage
- Hot & Cold Outside Shower
- Keyed-Alike Key System
- Venture Bottle Opener/Doggie Tie Down

Interior Package (Mandatory)

- StorMore Bedside Nightstands
- Tufted Dinette Cushions
- Stainless Steel Accented Appliances
- Designer Backsplash
- Furrion Bluetooth Stereo AM/FM/DVD/CD/MP3
- 7 CU FT Double Door Refrigerator
- 2-Burner Cooktop w/Flush Glass Cover
- 6-Gal Gas/Electric DSI Water Heater
- Vented Range Hood w/Light
- SafeTek® Box w/110v and USB Charging
- Quilted Comforter
- Designer Padded Headboard w/Storage

- Linoleum w/3-yr Warranty
- Sky Light in Living Area
- LED Lighting
- 82" Ceiling Height
- Power Exhaust Fan in Bathroom
- Shoe Cubby (F/P specific)
- Surf(x) Seamless Countertops w/Sink Cover and Tabletops
- Porcelain Foot Flush Toilet

Options

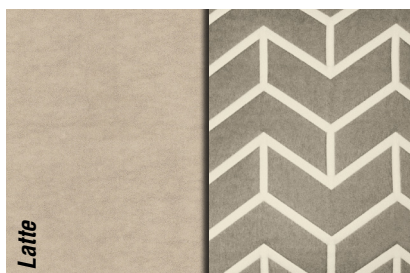
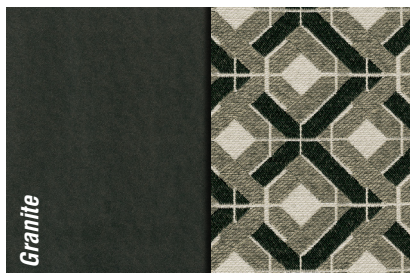
- Convection Microwave
- LED TV w/Swing Arm
- Upgraded Mattress (N/A 234)
- 13,500 A/C
- 15,000 A/C
- Murphy Bed w/Sofa & Upgraded Mattress (Std 234)
- Multi-Directional LED Power Awning
- Lighted Power Tongue Jack
- Swing-Away Bumper Mount Grill
- High Polished Aluminum Rims
- A-Frame Bike Rack
- Furrion Observation/Backup Camera

Highway Package (Option)

- Black Tank Flush
- Spare Tire, Carrier & Cover
- LP Bottle Cover

Discover Package (Option)

- Venture Bottle Opener/Doggie Tie Down
- Undermount Stainless Steel Single Bowl Farmer Sink
- Euro Steel Faucet
- Carbon Fiber Rock Guard & Slide-out End Walls
- Woodgrain Linoleum
- Solid Flip-up Step
- Swing Away Grab Handle
- Screen Shot Spring Screen Door
- Power Tongue Jack
- Aluminum Rims w/Black Accents
- LED Lighted Power Awning



Travel Trailers	SN190VRB	SN200VML	SN210VTB	SN220VBH	SN220VRB	SN231VRK	SN231VRL	SN234VBH
UVW (Unloaded Vehicle Weight)*	3,530	3,950	TBD	4,200	4,460	4,390	4,340	4,220
Dry Hitch Weight*	330	310	TBD	390	420	300	510	610
Dry Axle Weight*	3,200	3,450	TBD	3,810	3,960	4,000	3,830	3,610
NCC (Net Carrying Capacity)	970	1,040	TBD	1,000	740	800	860	980
GVWR	4,500	5,200	TBD	5,200	5,200	5,200	5,200	5,200
Interior Height	82"	82"	TBD	82"	82"	82"	82"	82"
Exterior Height with A/C	10' 4"	10' 4"	TBD	10' 4"	10' 4"	10' 4"	10' 4"	10' 4"
Exterior Width	90"	90"	TBD	90"	90"	90"	90"	90"
Exterior Length	22' 10"	23' 4"	TBD	26' 5"	26' 11"	26' 9"	26' 9"	26' 5"
Refrigerator (Cubic Feet)	7	7	7	7	7	7	7	7
Water Heater Cap. (Gal. G/E w/DSI)	6	6	6	6	6	6	6	6
Fresh Water Capacity (Gallon)	38	38	39	38	38	38	38	38
Black Water Capacity (Gallon)	30	30	31	30	30	30	30	30
Gray Water Capacity (Gallon)	30	30	31	30	30	60	30	30
LP Gas Capacity (Lbs.)	40	40	40	40	40	40	40	40
Furnace BTUs (1,000s)	20	20	20	20	20	20	20	20
Tire Size	14"	14"	TBD	14"	14"	14"	14"	14"
Awning	13'	14'	14'	13'	13'	17'	17'	13'

*This weight reflects the rolling average unit weight for each model. Your trailer weight will vary according to optional equipment.

SONIC LITE

SL169VMK ▶ Granite décor

Sonic Lite offers the same solid construction, but on a single axle frame from 2,480 pounds GVWR, for effortless towability. There's ample storage and many of the same features as Sonic, on a more compact scale.



SL169VMK ▼ Granite décor

It's all about comfort, but storage is a close second... The spacious 60" x 75" bed with USB chargers has headboard storage, StorMore nightstands and overhead storage. The hinged bed platform lifts up, for, you guessed it, even more storage.

Bathroom space is efficiently purposed, with extended countertops and shelving below, plus medicine cabinet and under-sink storage.



SONIC
LITE



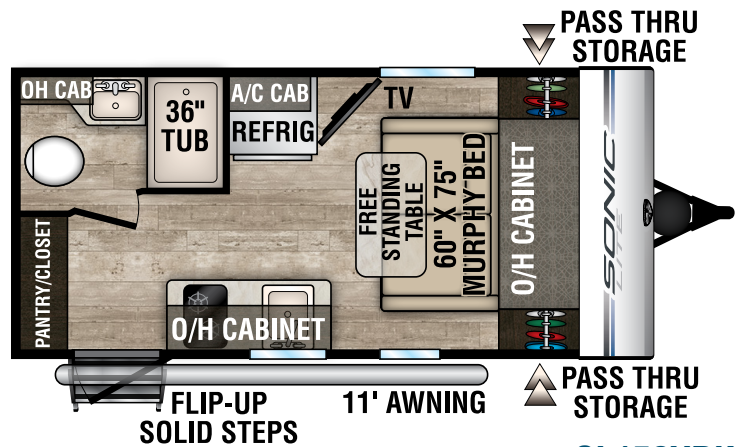
SL168VRB ▲ Granite décor

The dual burner gas cooktop with range hood and full-size convection microwave make meal prep a breeze.

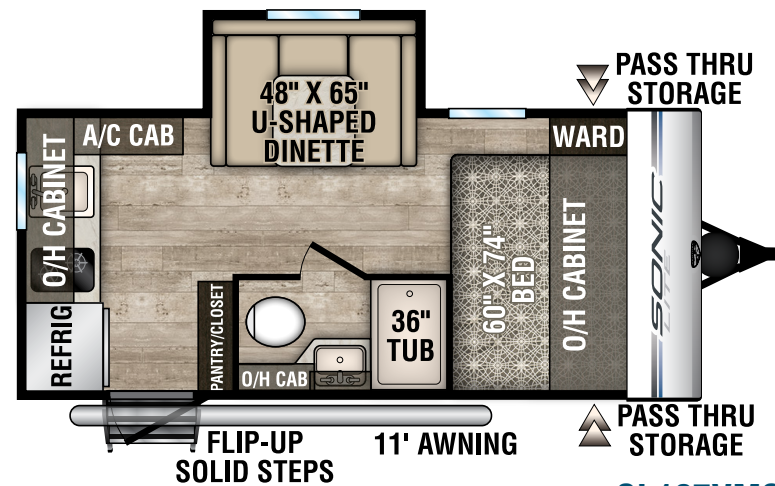


SL167VMS ▼

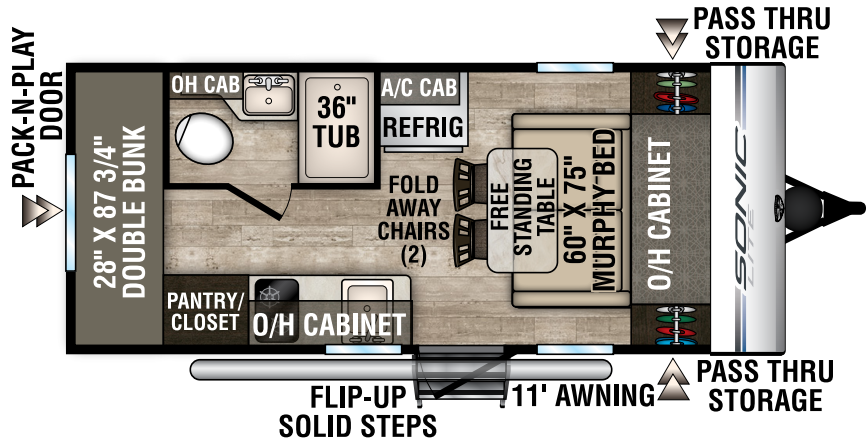
Sonic Lite's generous pantry space is one of its most livable features, with shelf height and depth that easily stores grocery goods of all shapes and sizes.



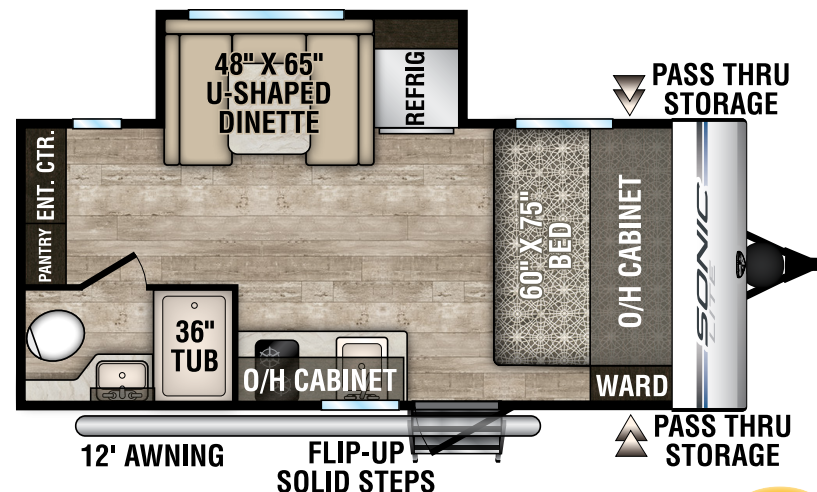
SL150VRK



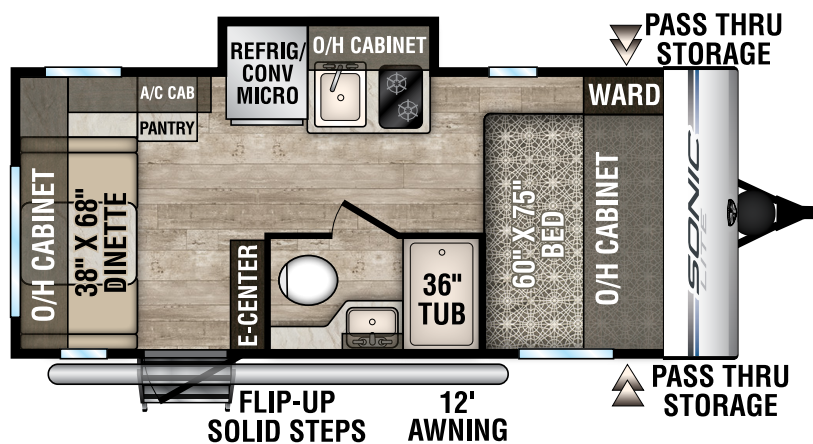
SL167VMS



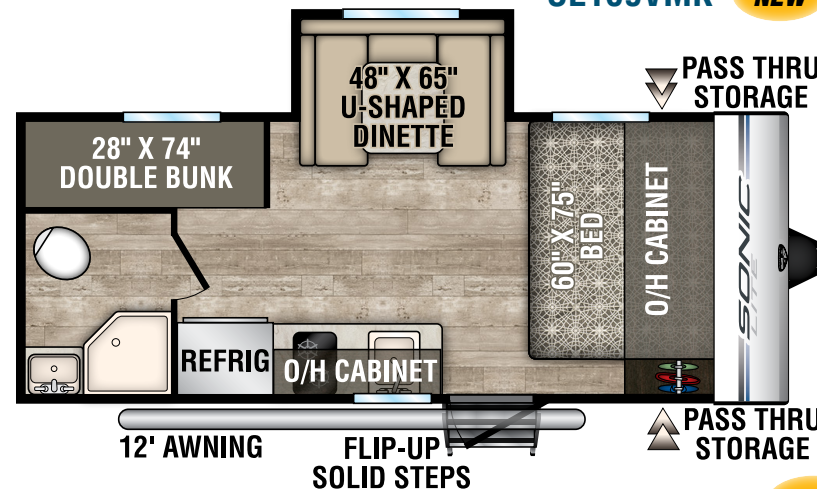
SL169VBH



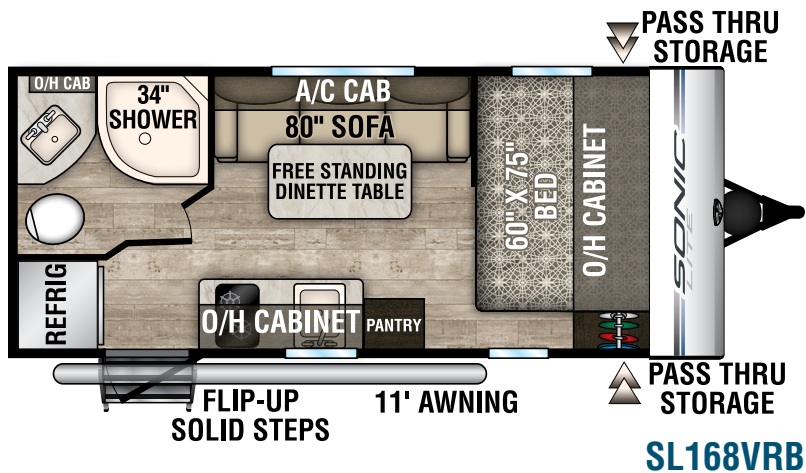
SL169VMK NEW



SL169VRD



SL169VUD NEW



Living Room/Kitchen

- Roller Ball Bearing Drawer Guides
- SafeTek® Box w/USB Charger
- High Efficiency LED Lighting
- (2) Interior Speakers
- Skylight
- Pleated Nightshades
- Shoe Cubby (F/P specific)
- Mountain Walnut Mortise & Tenon Hardwood Doors

Bathroom

- High Efficiency LED Lighting
- Porcelain Foot Flush Toilet
- Mirrored Medicine Cabinet w/Storage (F/P specific)
- Skylight Shower/Tub Surround
- Designer Shower Curtain (F/P specific)

Bedroom

- High Efficiency LED Lighting
- Foam Mattress
- Designer Valances
- 110V Outlet(s)
- Pleated Nightshades
- Quilted Reversible Comforter
- Overhead Storage
- Shirt Closet(s)
- USB Charger

Exterior/Construction Standards

- High Efficiency LED Lighting

- One-Piece Seamless Fiberglass Roof
- Easy Exchange 20# LP Tank
- Large Pass-Thru Storage
- Norco-BAL E-Coated & Epoxy Painted Frame
- Two-Tone White & Grey Color Infused Fiberglass
- Tinted Safety Glass Windows
- Aluminum Framed Floor, Sidewalls & Roof
- (2) Marine Grade Speakers
- Large Bumper w/Sewer Hose Storage
- Keyed-Alike Baggage & Entry Doors
- Porch Light
- Water Heater Bypass Valve
- Tank Monitor System

Exterior Luxury (Mandatory Option)

- Friction Hinge Entry Door
- Battery Disconnect Switch
- High Polished Aluminum Rims
- Black Tank Flush
- LED Lighted Power Awning
- One-Piece Seamless Fiberglass Roof
- 5/8" Tongue & Groove Plywood Floor Decking
- Single Axles w/Auto Adjust Brakes & EZ Lube Hubs
- NXG Frame
- Angled Scissor Jacks w/Footpads
- Large Grab Handle
- 4" Bumper Sewer Hose Storage
- Prewired for Furrrion Solar Panel System

- Prewired for Furrrion Backup Camera
- Dedicated Cable & Satellite Hookups
- Furrrion Marine Grade Detachable Power Cord
- Slam Latch Baggage Doors w/Magnetic Catches
- Lighted Pass-Thru Storage
- Exterior Shower w/Hot & Cold Water
- Keyed Alike Key System

Interior Luxury Package (Mandatory Option)

- StorMore Bedside Nightstands
- Tufted Dinette Cushions
- Stainless Steel Appliances
- Designer Backsplash
- Furrrion Bluetooth DVD/CD/MP3/AM/FM Stereo
- 4.2 CU FT Single Door Refrigerator
- 2-Burner Stainless Steel Cooktop
- Convection Microwave
- 6 Gallon DSI Gas/Electric Water Heater
- Vented Range Hood w/Light
- SafeTek® Box w/110V & USB Charger
- Designer Padded Headboard w/Storage
- Linoleum w/3 Year Warranty
- High Efficiency LED Lighting
- 82" Ceiling Height
- Power Exhaust Fan in Bathroom
- Shoe Cubby (F/P specific)
- Surf(x) Seamless Countertops w/Sink Cover & Table Top
- Porcelain Foot Flush Toilet

Options

- Swing Away Bumper Mount Grill
- TV w/Swing Arm
- Low Profile 13.5 BTU AC
- Lighted Power Tongue Jack
- Spare Tire, Carrier & Cover
- A-Frame Bike Rack
- Furrrion Observation Back-Up Camera
- Upgraded Mattress (N/A 150VRK, 169VBH)

Blast Package – Option

- Flip-up Solid Step
- Screen Shot Screen Door
- Radiant Technology Barrier
- Venture Bottle Opener/Doggie Tie Down
- Automotive Graphics
- Dual Color Fiberglass
- Power Tongue Jack
- Spare Tire Carrier & Cover

Travel Trailers	SL150VRK	SL167VMS	SL168VRB	SL169VBH	SL169VMK	SL169VRD	169VUD
UVW (Unloaded Vehicle Weight)*	2,480	2,898	2,950	2,990	3,335	3,376	3,380
Dry Hitch Weight*	270	350	300	410	350	332	440
Dry Axle Weight*	2,210	2,548	2,650	2,570	2,985	3,044	2,940
NCC (Net Carrying Capacity)	1,020	1,102	1,050	1,010	660	624	613
GVWR	3,500	4,000	4,000	4,000	4,000	4,000	4,000
Interior Height	82"	82"	82"	82"	82"	82"	82"
Exterior Height with A/C	9' 11"	9' 11"	9' 11"	9' 11"	9' 11"	9' 11"	9' 11"
Exterior Width	90"	90"	90"	90"	90"	90"	90"
Exterior Length	19' 2"	20' 4"	21'	21' 4"	21' 3"	21' 3"	22'
Refrigerator (Cubic Feet)	4.2	4.2	4.2	4.2	4.2	4.2	4.2
Water Heater Capacity (Gal. G/E w/DSI)	6	6	6	6	6	6	6
Fresh Water Capacity (Gallon)	38	38	38	38	38	38	38
Black Water Capacity (Gallon)	30	30	30	30	30	30	30
Gray Water Capacity (Gallon)	30	41	30	30	30	30	30
LP Gas Capacity (Lbs.)	20	20	20	20	20	20	20
Furnace BTUs (1,000s)	16	16	16	16	16	16	16
Tire Size	14"	15"	15"	15"	15"	15"	15"
Awning	11'	11'	11'	11'	12'	12'	12'

*This weight reflects the rolling average unit weight for each model. Your trailer weight will vary according to optional equipment.

INTERIOR STANDARDS & OPTIONS



Sonic's gorgeous seamless solid surface counters work well with the huge under-mount stainless steel sink.



The hidden SafeTek® cabinet keeps everyone charged up, while messy cords stay out of sight!



Keep countertops clutter free without skimping on cookware! The under-sink cabinet is spacious with sizable door openings, to accommodate multiple large pots and pans, as well as small appliances like toasters and crockpots.



A large skylight imparts a spa-like atmosphere to the oversized shower space.



Sonic Lite features a 4.2 CU FT refrigerator with veggie bin and top freezer.

Sonic features a 7 CU FT double door refrigerator.



Sonic's kitchen backsplash incorporates stylish horizontal woodgrain and metal appointments.

Sonic's pantry space easily stores groceries of all shapes and sizes.

EXTERIOR STANDARDS & OPTIONS



The sturdy and adjustable flip-up step folds up in one quick and easy motion.

Your outdoor gathering is a go, rain or shine, with the optional LED-lit power awning.



Sonic and Sonic Lite both offer one-piece seamless fiberglass roof construction.

Seamless roofing prevents potential leaks, as the water runs off the front and back with no extrusions or seams. Avoids leaks around the sidewall seams, windows, doors, compartments and corner seams. Reliable seamless construction equals long-term investment.



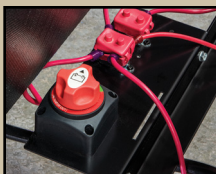
Pets can safely enjoy the great outdoors – the metal bottle opener doubles as a doggy tie-down.



The backup camera prep imparts peace of mind.



Detachable marine-grade power cord with light.



Handy exterior battery disconnect.

Level it on the First Try!



The LevelMatePRO option calculates and displays the height required to achieve a perfectly level position.

An arrow is displayed to indicate where the height needs to be added, further simplifying what has traditionally been a lot of guesswork and very time consuming.

Simply level, using the height indicated and when the red level indicator turns green, you're done!



High-polished aluminum rims add an upscale touch. Tandem axle Sonics have 14" nitrogen-filled radial tires that provide longer tire life.



Sonic's Weather Shield features a radiant foil barrier, forced heat and an enclosed underbelly on all tandem axle floorplans.



Commune with nature without missing your favorite show, thanks to the exterior TV hookup and solar prep.



And even more storage! The motion-lit pass through storage compartment with magnetic slam-latch baggage doors stores it all, and loads and unloads with ease.

DOWNLOAD YOUR FREE

KZ RV APP TODAY!

Owning and operating an RV has never been easier. Everything you need is now in the palm of your hand.



Track RV Maintenance



Keep RV Service Close



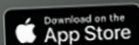
Set Custom Notifications



Reference Checklists
for RV Trips



DOWNLOAD
NOW!



RUNS WITH
TOGO

VISIT KZ-APP.COM TO LEARN MORE.



Due to continual research and advances, manufacturer reserves the right to change specifications, design, price and equipment without notice, and assumes no responsibility for any error in this literature. Some items shown are not included as standard or optional equipment.

©2018 Venture
12/19/18 | 80M

985 N 900 W, Shipshewana, IN 46565

www.venture-rv.com

Dealer:



SONIC