

# SPORTTREK

Lightweight Travel Trailers







SportTrek has always represented user-inspired design. What's new for 2019 is the purposeful residential kitchen, with continuous countertops, stainless steel under-mount sink with pull-down sprayer faucet, and recessed gas cooktop with glass cover, for added counter space. Indoor relaxation continues, with available heated theater seating, LED TV and all the best entertainment features.

A newly-designed exterior boasts sleek two-tone gray and white fiberglass sidewalls, which feature linear automotive graphics and a carbon fiber look front rock guard. Also new is the Weather Shield Package, with insulation components that let you extend your camping season.

With so many versatile SportTrek floorplans, you're sure to find the perfect fit.





ST327VIK ▶ Latte décor

SportTrek ST327VIK's palatial kitchen with opposing slideouts includes an island and stylish lighted wall hutch for added counter space and storage. Seamless countertops are beautiful, durable and easy to clean, and the stainless steel double-bowl under-mount sink with satin nickel sprayer faucet completes the residential design.

Optional theater seating features heat, massage, and LED light accents. Controls are cleverly built into the rim of the cup holder; no extra remote to keep track of. Seats can be reclined together or individually (STD on 312VIK & 312VRK).



ST251VRK ▶ Granite décor



This functional focal point features a scenic window, cozy fireplace, LED TV, decorative shelving and woodwork accents. The table surface adds charm and utility.



ST251VRK ▶ Granite décor



ST327VIK ▶ Latte décor



SportTrek ST327VIK's 42-inch dinette seats adults comfortably, and tinted safety glass windows open for fresh air. The dinette folds neatly into additional sleep space.

The bath offers a corner vanity including mirrored medicine cabinet.



ST251VRK ▶ Granite décor



SportTrek's ST251VRK includes a built-in entertainment center with cozy frameless fireplace, and can be upgraded with optional theater seating. The kitchen, with sunny window views, features ample cabinet and drawer space, deep under-mount stainless steel sink, a three-burner cooktop with flush glass cover, and a built-in oven with vented range hood. Stainless steel appliances, including an 8-cubic-foot refrigerator and microwave with turntable, add an upscale touch.





ST271VMB ▶ Latte décor

SportTrek's thoughtful layout is big on style, comfort and storage, with panoramic windows to welcome natural light, and wider doorways throughout. Luscious dark hardwood cabinetry features subtle frosted glass accents. The generous 34-inch radius shower is roomy, relaxing and residential. The linoleum offers a three-year warranty against cold cracking.

Creative use of space sets SportTrek apart. ST327VIK's triple-slide floorplan includes a bunkroom with removable table and a sofa with fold-down center console that converts into additional sleeping space.



ST327VIK ▶ Latte décor



The deep closet with adjustable shelving is a great way to stay organized.



ST327VIK



ST271VMB ▶ Latte décor



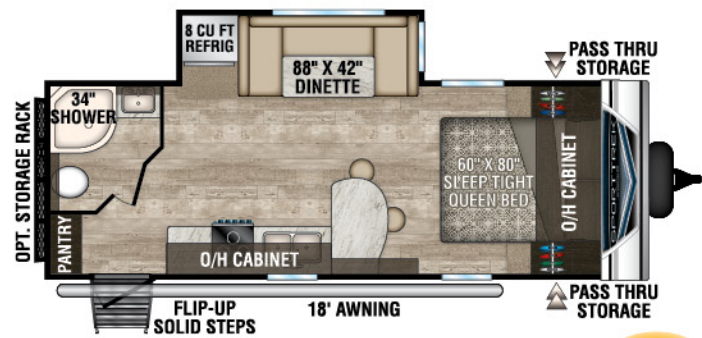
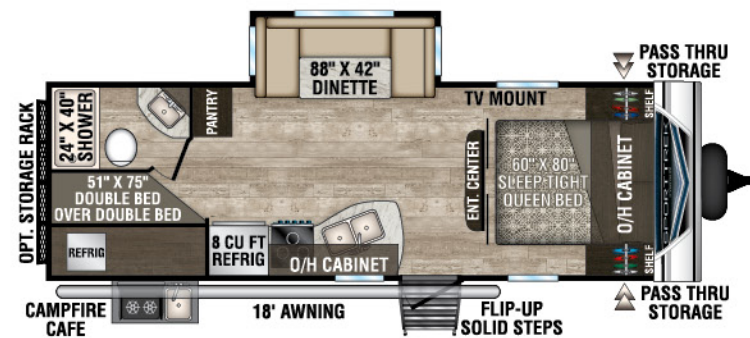
The optional 70-inch tri-fold sofa converts quickly and easily to a comfortable sleep space, with convenient nightshades on all windows. Residential-grade carpet feels nice underfoot, and offers durability.

The 60 x 80-inch queen bed with padded headboard features overhead storage, easy-reach light switches, full-length side closets and StorMore nightstands with USP ports and space for CPAPs.

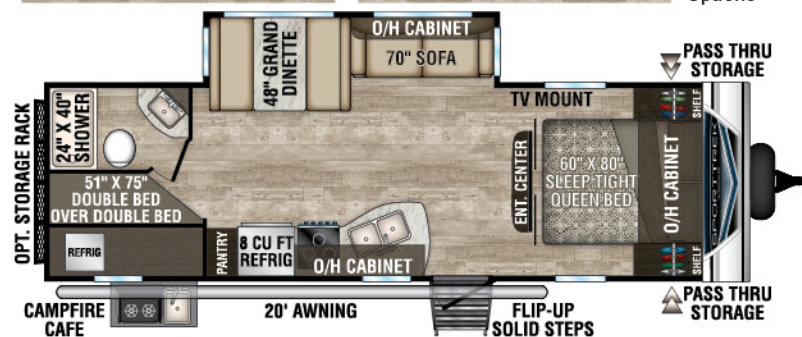


ST327VIK

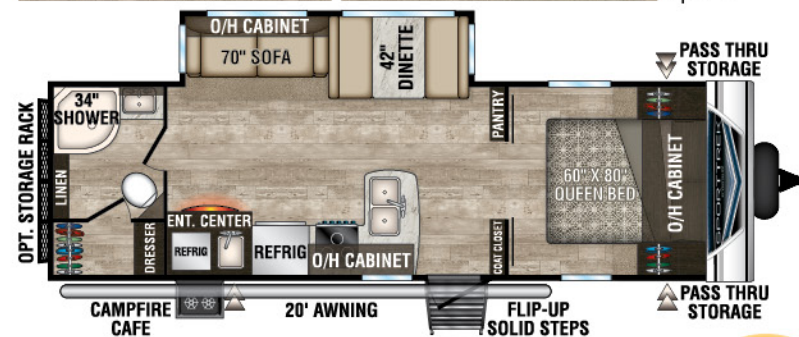
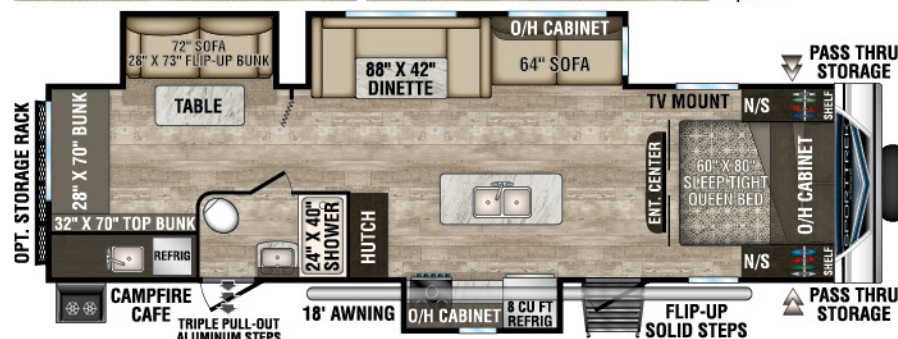


ST221VRB **NEW**

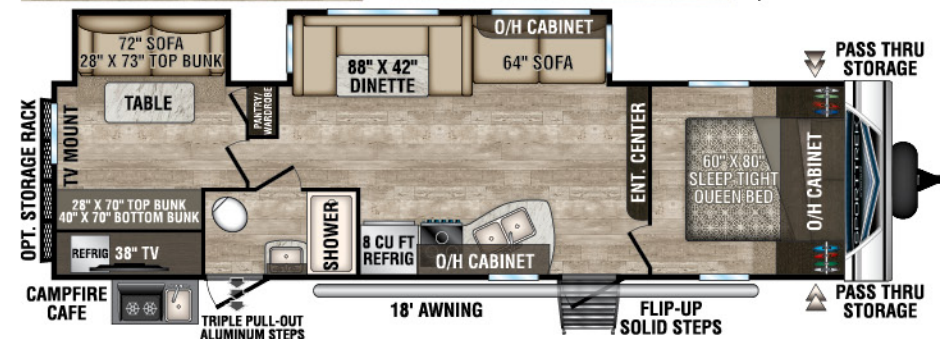
ST251VBH

ST270VBH  
Slideout  
OptionsST271VMB  
Slideout  
Options

ST270VBH

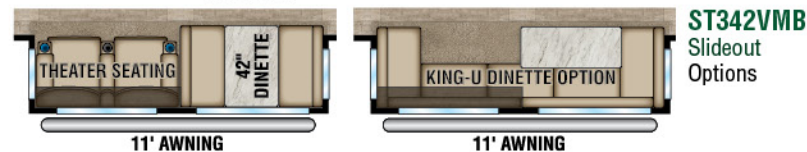
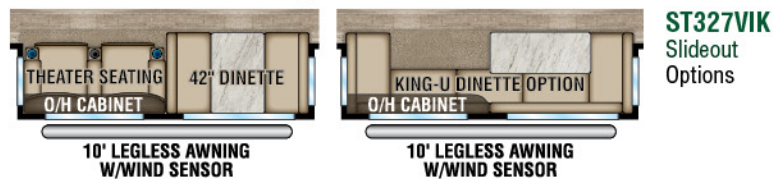
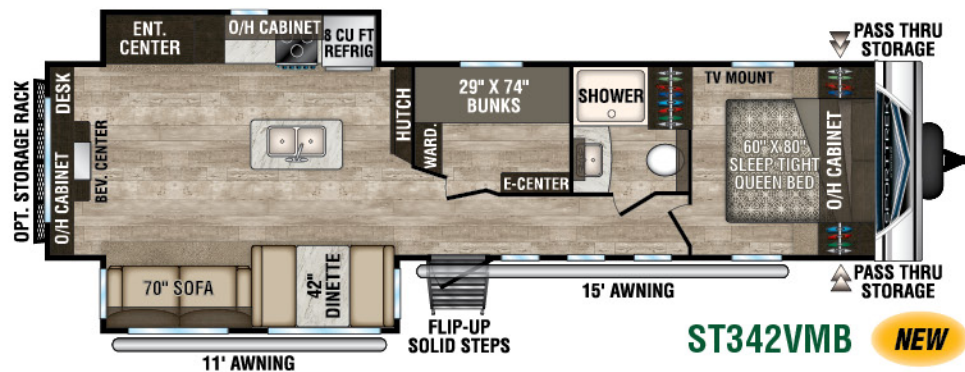
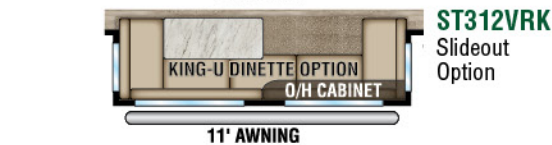
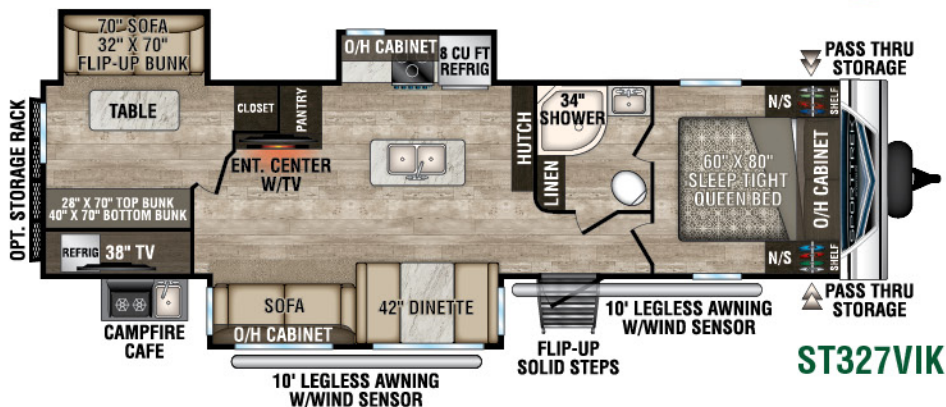
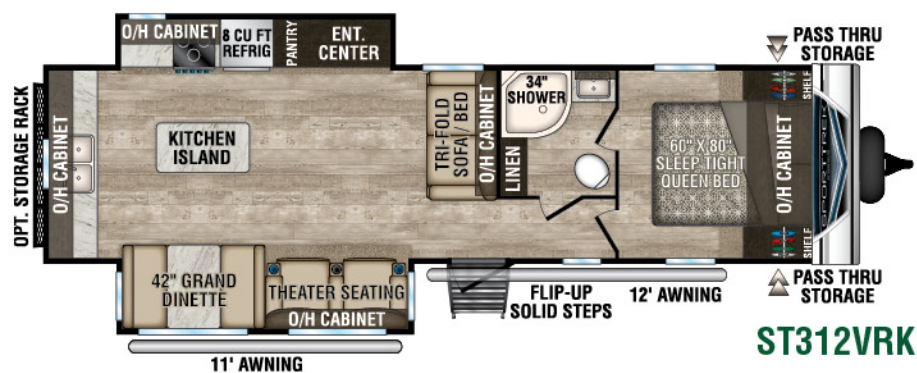
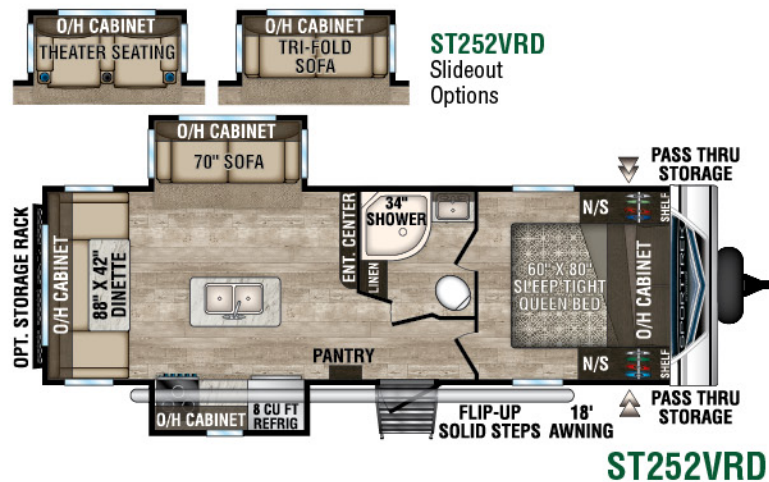
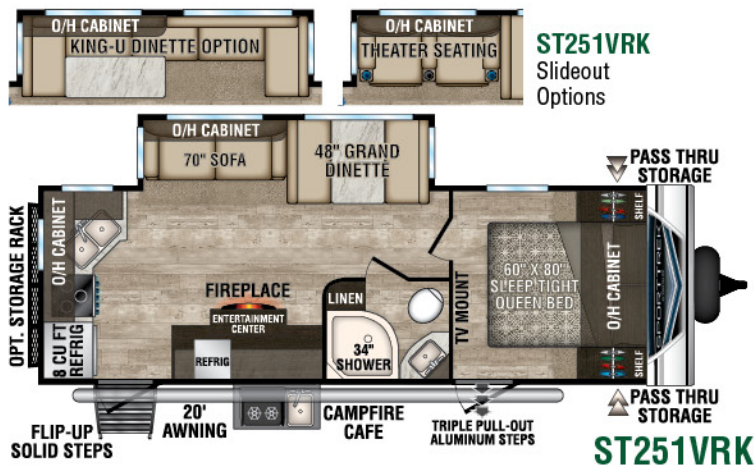
ST271VMB **NEW**ST320VIK  
Slideout  
OptionsST322VBH  
Slideout  
Options

ST320VIK



ST322VBH







## Living Room/Kitchen

- Built-In Radius Entertainment Center w/Shoe Cubby (VBF)
- High Efficiency LED Lighting
- Panoramic Opening Slideout Windows
- Mortise & Tenon Hardwood Cabinet Doors
- Tilt-Out Utility Tray
- High-Rise Satin Nickel Faucet w/Sprayer
- Cutting Board Sink Cover
- Comfort by Design® Grand Dinette
- Comfort by Design® Sofa
- Flush-Mount Interior Speakers

## Appliances

- 3-Burner Flush Mount Stovetop w/Oven & Glass Top
- Vented Range Hood w/Light
- Coleman® Whisper A/C

## Bath

- Foot-Flush Porcelain Toilet
- Multi-Shelf Shower or Tub
- Designer Shower Curtain (VBF)
- Mirrored Medicine Cabinet

## Bedroom

- 60" x 80" Sleep Tight® Mattress
- Teddy Bear® Bunk Mattress(s)
- Solid Wood Nightstands
- Full Length Closets w/Easy Access Nightstands w/USB Port (110 outlet)
- (2) Gas Struts for Large Under-Bed Storage
- Solid Wood Privacy Door(s) (most models)

- TV & Satellite Connections
- Hard Valances
- Nightshades
- StorMore Nightstands (CPAP sized)

## Exterior/Construction Features

- Two-Tone White & Grey Exterior Fiberglass
- Carbon Fiber Look Rock Guard
- EZ Access® LP Tank Cover
- Large Pass-Thru Baggage Doors (cooler-sized)
- Wide-Trek® Axles
- Self-Adjusting Brakes
- Deep Slides w/Colored Slideout Ends
- Tinted Safety Glass Windows
- Hitch Light
- Omni Directional Digital Antenna Receiver
- Large Assist Grab Handle
- Cable/Satellite Connection (2 locations)
- (2) Marine-Grade Exterior Speakers
- Gutter w/Downspouts
- Gutters above Slideouts
- Extra-Long Awnings
- 15" Radial Tires

## Level Mate Pro (Mandatory)

- Venture Exclusive Wireless RV Leveling System

## Weather-Shield Package (Mandatory)

- Forced heat
- Enclosed underbelly

- Enclosed Gate Valves
- Radiant Foil Barrier

## Trek Package (Mandatory)

- Friction Hinge Entry Door
- Interior Entry Door Motion Light
- Pass-thru Storage Motion Light
- Mountain Walnut Interior Wood
- Tufted Dinette Cushions
- Stainless Steel Appliances
- 5/8" Tongue & Groove Plywood Floor Decking
- NXG Huck Bolt Frame
- EZ Lube Hubs
- (4) Secure Stance Angled Stabilizer Jacks
- (2) 20 LB Easy Exchange LP Tanks
- Walkable Roof
- Hot & Cold Exterior Shower
- 6-Gallon Gas/Electric DSI Water Heater
- Marine Grade Detachable Power Cord w/Light
- Prewired for Furion Solar & Observation Camera
- (4) Ground Effect Blue LED Lights
- Magnetic Baggage Door Catches
- Keyed Alike Key System
- Battery Disconnect
- Microwave w/Turntable
- Safe-Tek Hidden Storage w/Charging Center
- (2) USB Charging Ports (Bedroom)
- 82" Interior Ceiling
- 72" Slideout Height

- Overhead Storage in Slideouts
- Skylight w/Shade
- Pleated Nightshades
- Seamless Surf(X) Countertops, Sink Covers and Tabletops
- Stainless Steel Undermount Sink
- Hardwood Cabinet Doors & Drawer Faces
- Full-Extension Ball Bearing Drawer Guides
- Pots & Pans Drawer
- Adjustable Pantry Shelves (most models)
- Shoe Cubby (varies by floorplan)
- Full Length Closets w/StorMore Nightstands
- Designer Padded Headboard
- Quilted Comforter
- Residential Carpet
- Wood Linoleum Flooring w/3-Year Warranty
- Radius Glass Shower Enclosure (VBF)
- Porcelain Foot Flush Toilet
- Bluetooth Stereo AM/FM/DVD/CD/MP3

## Options

- Frameless Fireplace (STD on 251VRK, 271VMB, 327VIK) (N/A 221VRB)
- 50 AMP Service w/2nd A/C Prep
- 2nd A/C (50A w/Prep Req'd)
- Table/Chairs IPO Booth (N/A 251VBH)
- Tri-Fold Sofa (Std 312VRK, N/A 251VBH)
- Theater Seats (Std 312VRK & 312VIK, N/A 251VBH)
- Upgraded Mattress
- 15,000 BTU A/C

- Flip-Up Cargo Tray (Prep Std)
- Aluminum Rims
- Lighted Power Tongue Jack
- (2) Legless Awnings w/Wind Sensors (327VIK)
- Swing Away Bumper Mount Grill
- King "U" Sofa (N/A 221VRB, 251VBH, 252VRD)
- 3/4 Front Cap
- Furion Observation/Backup Camera
- (4) Independent Power Stabilizer Jacks
- Power Awning w/LED Lights

## Expedition Package (Optional)

- Flip-up Solid Step (Main Door)
- Venture Bottle Opener/Dog Tie Down
- Jiffy w/Fold Down Center Console
- Flush-Mount Stove/Oven w/back light
- 8 CU FT Refrigerator
- Tile Back Splash
- LED Power Awning
- High Polished Aluminum Rims w/Black accents
- Flip-up Cargo Tray
- Power Tongue Jack

## Trail Package (Optional)

- Spare Tire/Carrier/Cover
- Ladder
- Black Tank Flush

## Entertainment Package (Optional)

- 40" HD LED TV w/ Swing-Arm Bracket



## Level it on the First Try!



The LevelMatePRO option calculates and displays the height required to achieve a perfectly level position.

An arrow is displayed to indicate where the height needs to be added, further simplifying what has traditionally been a lot of guesswork and very time consuming.

Simply level, using the height indicated and when the red level indicator turns green, you're done!

**LevelMatePRO**  
Wireless Vehicle Leveling System



SportTrek's Weather Shield features a radiant foil barrier, forced heat and an enclosed underbelly and gate valves.

DÉCOR



## SPECIFICATIONS

Travel Trailers	ST221VRB	ST251VBH	ST251VRK	ST252VRD	ST270VBH	ST271VMB	ST312VIK	ST312VRK	ST320VIK	ST322VBH	ST327VIK	ST342VMB
UVW (Unloaded Vehicle Weight)*	5,230	5,550	5,940	5,940	5,950	6,390	7,390	7,260	7,700	7,390	8,070	7,870
Dry Hitch Weight*	520	710	630	680	690	730	730	740	900	740	840	840
Dry Axle Weight*	4,710	4,840	5,310	5,260	5,260	5,660	6,660	6,520	6,800	6,650	7,230	7,030
NCC (Net Carrying Capacity)	1,770	1,450	1,060	1,060	1,050	1,910	910	1,040	900	1,210	1,530	1,730
GVWR	7,000	7,000	7,000	7,000	7,000	8,300	8,300	8,300	8,600	8,600	9,600	9,600
Interior Height	82"	82"	82"	82"	82"	82"	82"	82"	82"	82"	82"	82"
Exterior Height with A/C	11' 4"	11' 2"	11' 2"	11' 2"	11' 2"	11' 4"	11' 4"	11' 4"	11' 4"	11' 4"	11' 6"	11' 6"
Exterior Width	96"	96"	96"	96"	96"	96"	96"	96"	96"	96"	96"	96"
Exterior Length	26' 5"	28' 7"	28' 7"	29' 5"	30' 8"	30' 11"	34' 11"	35' 1"	35' 11"	35' 11"	36' 4"	37' 11"
Refrigerator (Cubic Feet)	8	8	8	8	8	8	8	8	8	8	8	8
Water Heater Cap. (Gal. Gas w/DSI)	6	6	6	6	6	6	6	6	6	6	6	6
Fresh Water Capacity (Gallon)	40	40	40	40	40	40	40	40	40	40	40	40
Black Water Capacity (Gallon)	32	32	32	32	32	32	32	32	32	32	32	32
Gray Water Capacity (Gallon)	32	32	64	32	32	64	32	64	32	32	32	64
LP Gas Capacity (Lbs.)	40	40	40	40	40	40	40	40	40	40	40	40
Furnace BTUs (1,000s)	30	30	30	30	30	30	30	30	30	30	30	30
Tire Size	15"	15"	15"	15"	15"	15"	15"	15"	15"	15"	15"	15"
Awning	18'	18'	20'	18'	20'	20'	20'	11'/12'	18'	18'	10'/10'	11'/15'

\*This weight reflects the rolling average unit weight for each model. Your trailer weight will vary according to optional equipment.



## INTERIOR FEATURES



The Safe-Tek storage cabinet with charging center keeps cords out of sight.



StorMore nightstands, tucked behind the full-sized closets, are near outlets and large enough to store CPAPs.



The crockpot fits! An oversized heavy-duty under-refrigerator drawer holds sizable kitchen items.



Take it all! Two 36-inch bins can be removed for packing, then stored securely under the dinette for handy retrieval later.

Store large items under the bed.



Every bit of storage space is put to use, including cabinets on the end of the island.



Each SportTrek floorplan offers loads of storage opportunities.

*Storage... and MORE Storage!*

## OPTIONAL FURNITURE



Optional theater seating is comfortable.

The tri-fold sofa adds additional sleeping space.



The king-sized U-dinette option provides plenty of extra elbow room, including expanded seating space and table surface. The entire sofa converts into extra sleeping accommodations.



# EXTERIOR STANDARDS & OPTIONS



The standard flip-up entry step provides solid footing, and folds up in one easy motion when you're ready for takeoff.



The standard power awning with LED light strip adds ambiance and charm to evening gatherings.



The sturdy rear rack accommodates cargo for the trip, or bicycles, and folds away completely when not in use.



Solar prep allows the easy add of solar power, for off-grid use.



The sturdy bottle opener doubles as a doggie tie down.



Backup prep is ready for a backing/observation camera.

The Campfire Café options are perfect when it's too nice out to cook indoors, with gas cooktop, refrigerator, wash-up sink and optional shelving.



Standard on ST251VBH, ST251VRK and ST270VBH.



Optional bumper-mount grill.



This outside kitchen is standard on the ST271VMB and ST312VIK.



And this is standard on the ST322VBH and ST327VIK.



Cable and satellite hookups are standard.



Rain spouts divert water from the sidewalls.



The lighted power tongue jack allows for day/night setup.



The generous cooler-sized pass-through storage compartment with magnetic catch allows for easy loading and unloading.



Highly-polished aluminum rims with black accents and nitrogen-filled 15-inch radial tires with roadside assistance.



# DOWNLOAD YOUR FREE

KZ RV APP TODAY!

Owning and operating an RV has never been easier. Everything you need is now in the palm of your hand.



Track RV Maintenance



Keep RV Service Close



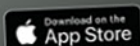
Set Custom Notifications



Reference Checklists  
for RV Trips



DOWNLOAD  
NOW!



VISIT [KZ-APP.COM](http://KZ-APP.COM) TO LEARN MORE.



985 N 900 W, Shipshewana, IN 46565  
[www.venture-rv.com](http://www.venture-rv.com)

Dealer:

Due to continual research and advances, manufacturer reserves the right to change specifications, design, price and equipment without notice, and assumes no responsibility for any error in this literature. Some items shown are not included as standard or optional equipment.  
©2018 Venture  
1/29/19 | 60M



# SPORTTREK

Lightweight Travel Trailers