

# SPORTTREK

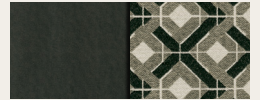
Lightweight Travel Trailers



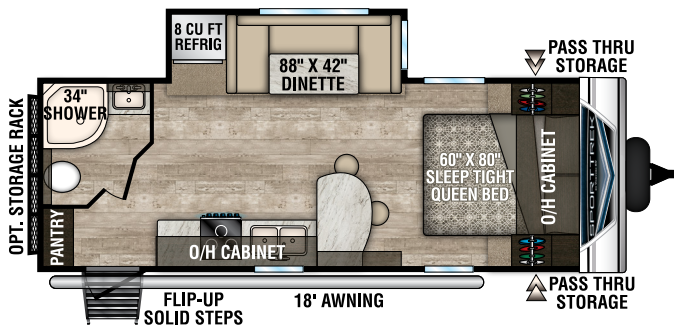
2019 Décor



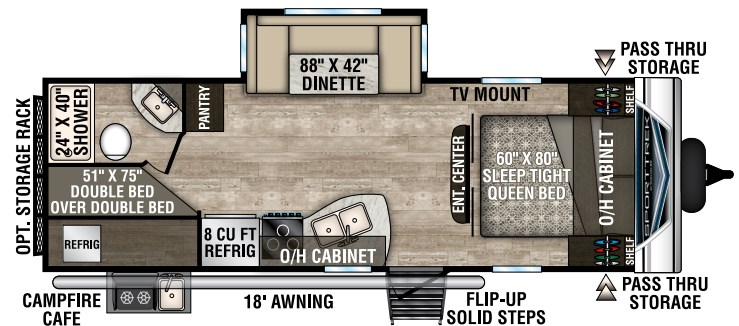
Latte



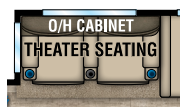
Granite



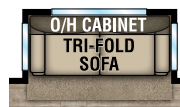
ST221VRB **NEW**



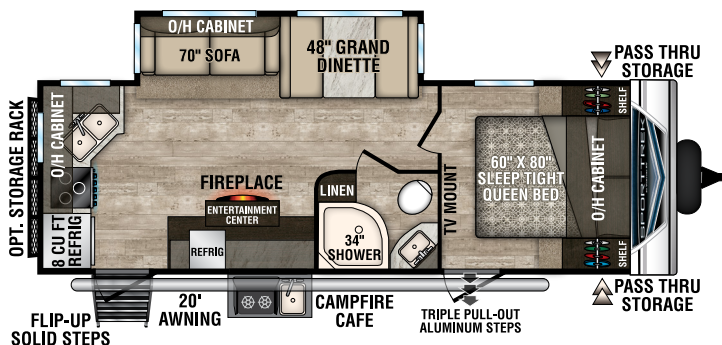
ST251VBH



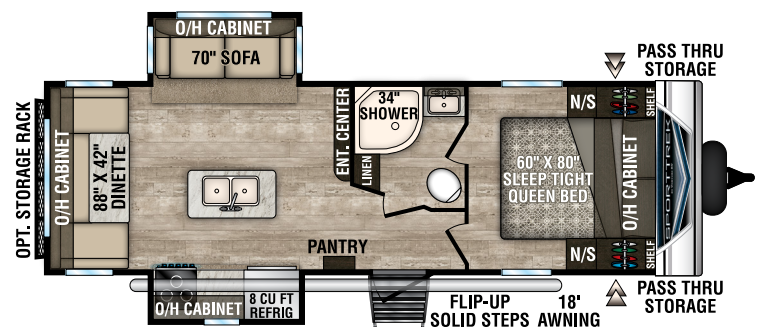
ST251VRK  
Slideout  
Options



ST252VRD  
Slideout  
Options



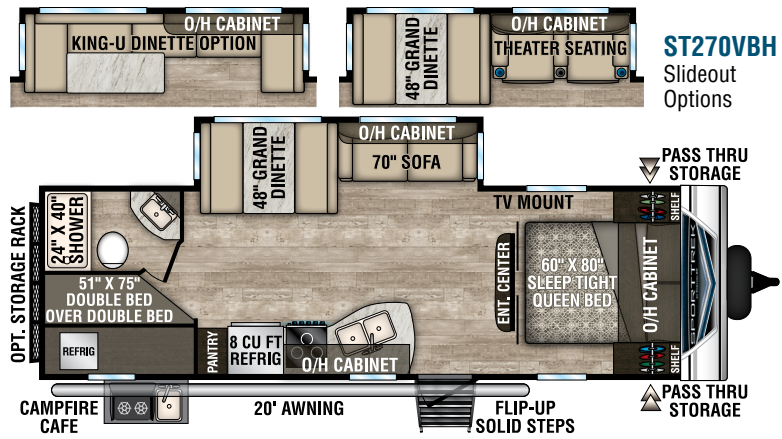
ST251VRK



ST252VRD

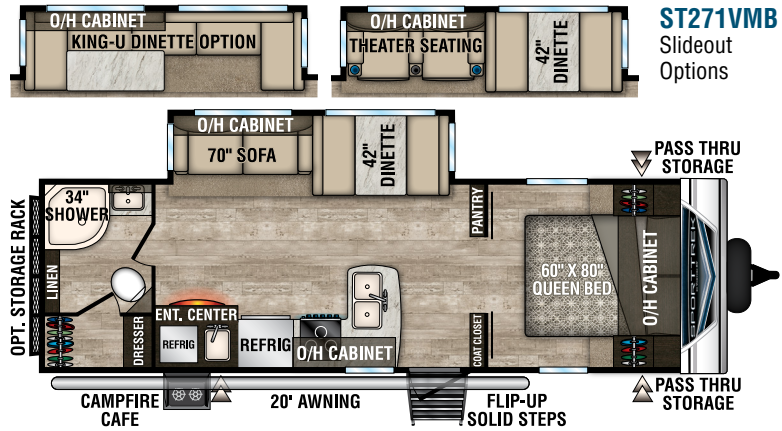
# SPORTS

**ST270VBH**



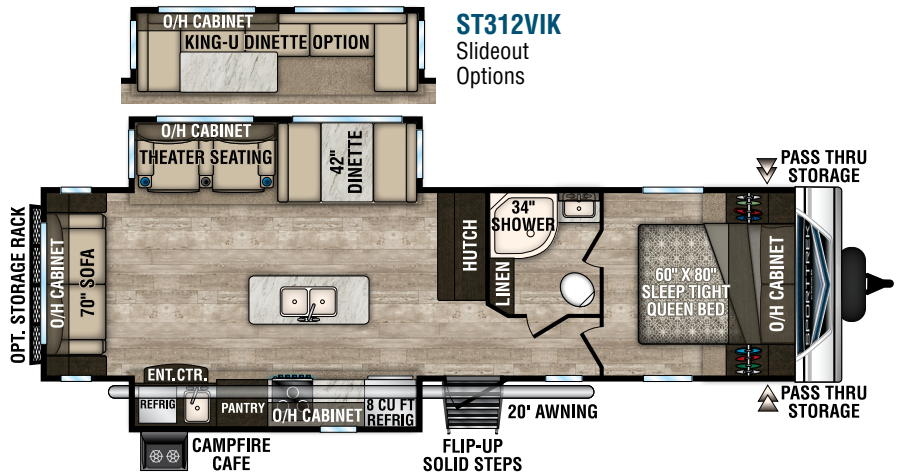
**ST271VMB**

**NEW**



**ST312VIK**

**NEW**



**ST312VRK**



**ST312VRK**

Slideout  
Option



[illegible]

**ST322VBH**  
Slideout  
Options

**OPT. STORAGE RACK**  
TV MOUNT

**CAMPFIRE CAFE**

**TRIPLE PULL-OUT ALUMINUM STEPS**

**18' AWNING**

**FLIP-UP SOLID STEPS**

**PASS THRU STORAGE**

**SHOWER**

**8 CU. FT. REFRIG.**

**O/H CABINET**

**38" TV**

**28" X 70" TOP BUNK**  
**40" X 70" BOTTOM BUNK**

**REFRIG.**

**TABLE**

**72" SOFA**  
**28" X 73" TOP BUNK**

**PANTRY/WARDROBE**

**88" X 42" DINETTE**

**64" SOFA**

**60" X 80" SLEEP TIGHT QUEEN BED**

**O/H CABINET**

**EXT. CENTER**

**O/H CABINET**

**THEATER SEATING**

**88" X 42" DINETTE**

**O/H CABINET**

**KING U-DINETTE OPTION**

**2015 Jayco Jay Flight 28**

**Front Porch:** 10' LEGLESS AWNING W/WIND SENSOR, FLIP-UP SOLID STEPS, 10' LEGLESS AWNING W/WIND SENSOR.

**Living Area:** 70" SOFA, 32" X 70" FLIP-UP BUNK, TABLE, 28" X 70" TOP BUNK, 40" X 70" BOTTOM BUNK, 38" TV, CAMPFIRE CAFE, 42" DINETTE, SOFA, O/H CABINET.

**Kitchen Area:** 10' LEGLESS AWNING W/WIND SENSOR, 42" DINETTE, SOFA, O/H CABINET, 34" SHOWER, LINEN, HUTCH, 8 CU FT REFRIG.

**Bedroom Area:** 60" X 80" SLEEP TIGHT QUEEN BED, O/H CABINET, 34" SHOWER, LINEN, HUTCH, 8 CU FT REFRIG.

**Bathroom:** 34" SHOWER, LINEN, HUTCH, 8 CU FT REFRIG.

**Rear Porch:** 10' LEGLESS AWNING W/WIND SENSOR, 42" DINETTE, SOFA, O/H CABINET, 34" SHOWER, LINEN, HUTCH, 8 CU FT REFRIG.

**Storage:** OPT. STORAGE RACK, PASS THRU STORAGE, PASS THRU STORAGE.

**10' x 10' CAMPER**

OPT. STORAGE RACK

O/H CABINET

ENT. CENTER

DEV. CENTER

70" SOFA

42" DINETTE

11' AWNING

HUTCH

WARD.

29" X 74" BUNKS

E-CENTER

SHOWER

TOILET

8 CU FT REFRIG.

TV MOUNT

60" X 80" SLEEP TIGHT QUEEN BED

O/H CABINET

PASS THRU STORAGE

15' AWNING

FLIP-UP SOLID STEPS

## Living Room/Kitchen

- Built-In Radius Entertainment Center w/ Shoe Cubby (VBF)
- High Efficiency LED Lighting
- Panoramic Opening Slideout Windows
- Mortise & Tenon Hardwood Cabinet Doors
- Tilt-Out Utility Tray
- High-Rise Satin Nickel Faucet w/Sprayer
- Cutting Board Sink Cover
- Comfort by Design® Grand Dinette
- Comfort by Design® Sofa
- Flush-Mount Interior Speakers

## Appliances

- 3-Burner Flush Mount Stovetop w/Oven & Glass Top
- Vented Range Hood w/Light
- Coleman® Whisper A/C

## Bath

- Foot-Flush Porcelain Toilet
- Multi-Shelf Shower or Tub
- Designer Shower Curtain (VBF)
- Mirrored Medicine Cabinet

## Bedroom

- 60" x 80" Sleep Tight® Mattress
- Teddy Bear® Bunk Mattress(s)
- Solid Wood Nightstands
- Full Length Closets w/Easy Access Nightstands w/USB Port (110 outlet)
- (2) Gas Struts for Large Under-Bed Storage
- Solid Wood Privacy Door(s) (most models)
- TV & Satellite Connections
- Hard Valances
- Nightshades
- StorMore Nightstands (CPAP sized)

## Exterior/Construction

### Features

- Two-Tone White & Grey Exterior Fiberglass

- Carbon Fiber Look Rock Guard
- EZ Access® LP Tank Cover
- Large Pass-Thru Baggage Doors (cooler-sized)
- Wide-Trek® Axles
- Self-Adjusting Brakes
- Deep Slides w/Colored Slideout Ends
- Tinted Safety Glass Windows
- Hitch Light
- Omni Directional Digital Antenna Receiver
- Large Assist Grab Handle
- Cable/Satellite Connection (2 locations)
- (2) Marine-Grade Exterior Speakers
- Gutter w/Downspouts
- Gutters above Slideouts
- Extra-Long Awnings
- 15" Radial Tires

### Level Mate Pro (Mandatory)

- Venture Exclusive Wireless RV Leveling System

### Weather-Shield Package (Mandatory)

- Forced heat
- Enclosed underbelly
- Enclosed Gate Valves
- Radiant Foil Barrier

### Trek Package (Mandatory)

- Friction Hinge Entry Door
- Interior Entry Door Motion Light
- Pass-thru Storage Motion Light
- Mountain Walnut Interior Wood
- Tufted Dinette Cushions
- Stainless Steel Appliances
- 5/8" Tongue & Groove Plywood Floor Decking
- NXG Huck Bolt Frame
- EZ Lube Hubs
- (4) Secure Stance Angled Stabilizer Jacks
- (2) 20 LB Easy Exchange LP Tanks

- Walkable Roof
- Hot & Cold Exterior Shower
- 6-Gallon Gas/Electric DSI Water Heater
- Marine Grade Detachable Power Cord w/Light
- Prewired for Furrion Solar & Observation Camera
- (4) Ground Effect Blue LED Lights
- Magnetic Baggage Door Catches
- Keyed Alike Key System
- Battery Disconnect
- Microwave w/Turntable
- Safe-Tek Hidden Storage w/Charging Center
- (2) USB Charging Ports (Bedroom)
- 82" Interior Ceiling
- 72" Slideout Height
- Overhead Storage in Slideouts
- Skylight w/Shade
- Pleated Nightshades
- Seamless Surf(X) Countertops, Sink Covers and Tabletops
- Stainless Steel Undermount Sink
- Hardwood Cabinet Doors & Drawer Faces
- Full-Extension Ball Bearing Drawer Guides
- Pots & Pans Drawer
- Adjustable Pantry Shelves (most models)
- Shoe Cubby (varies by floorplan)
- Full Length Closets w/StorMore Nightstands
- Designer Padded Headboard
- Quilted Comforter
- Residential Carpet
- Wood Linoleum Flooring w/3-Year Warranty
- Radius Glass Shower Enclosure (VBF)
- Porcelain Foot Flush Toilet
- Bluetooth Stereo AM/FM/DVD/CD/MP3

## Options

- Frameless Fireplace (STD on 251VRK, 271VMB, 327VIK) (N/A 221VRB)

- 50 AMP Service w/2nd A/C Prep
- 2nd A/C (50A w/Prep Req'd)
- Table/Chairs IPO Booth (N/A 251VBH)
- Tri-Fold Sofa (Std 312VRK, N/A 251VBH)
- Theater Seats (Std 312VRK & 312VIK, N/A 251VBH)
- Upgraded Mattress
- 15,000 BTU A/C
- Flip-Up Cargo Tray (Prep Std)
- Aluminum Rims
- Lighted Power Tongue Jack
- (2) Legless Awnings w/Wind Sensors (327VIK)
- Swing Away Bumper Mount Grill
- King "U" Sofa (N/A 221VRB, 251VBH, 252VRD)
- 3/4 Front Cap
- Furrion Observation/Backup Camera
- (4) Independent Power Stabilizer Jacks
- Power Awning w/LED Lights

### Expedition Package (Optional)

- Flip-up Solid Step (Main Door)
- Venture Bottle Opener/Dog Tie Down
- Jiffy w/Fold Down Center Console
- Flush-Mount Stove/Oven w/back light
- 8 CU FT Refrigerator
- Tile Back Splash
- LED Power Awning
- High Polished Aluminum Rims w/Black accents
- Flip-up Cargo Tray
- Power Tongue Jack

### Trail Package (Optional)

- Spare Tire/Carrier/Cover
- Ladder
- Black Tank Flush

### Entertainment Package (Optional)

- 40" HD LED TV w/ Swing-Arm Bracket

Travel Trailers	ST221VRB	ST251VBH	ST251VRK	ST252VRD	ST270VBH	ST271VMB	ST312VIK	ST312VRK	ST320VIK	ST322VBH	ST327VIK	ST342VMB
UVW (Unloaded Vehicle Weight)*	5,230	5,550	5,940	5,940	5,950	6,390	7,390	7,260	7,700	7,390	8,070	7,870
Dry Hitch Weight*	520	710	630	680	690	730	730	740	900	740	840	840
Dry Axle Weight*	4,710	4,840	5,310	5,260	5,260	5,660	6,660	6,520	6,800	6,650	7,230	7,030
NCC (Net Carrying Capacity)	1,770	1,450	1,060	1,060	1,050	1,910	910	1,040	900	1,210	1,530	1,730
GVWR	7,000	7,000	7,000	7,000	7,000	8,300	8,300	8,300	8,600	8,600	9,600	9,600
Interior Height	82"	82"	82"	82"	82"	82"	82"	82"	82"	82"	82"	82"
Exterior Height with A/C	11' 4"	11' 2"	11' 2"	11' 2"	11' 2"	11' 4"	11' 4"	11' 4"	11' 4"	11' 4"	11' 6"	11' 6"
Exterior Width	96"	96"	96"	96"	96"	96"	96"	96"	96"	96"	96"	96"
Exterior Length	26' 5"	28' 7"	28' 7"	29' 5"	30' 8"	30' 11"	34' 11"	35' 1"	35' 11"	35' 11"	36' 4"	37' 11"
Refrigerator (Cubic Feet)	8	8	8	8	8	8	8	8	8	8	8	8
Water Heater Cap. (Gal. Gas w/DSI)	6	6	6	6	6	6	6	6	6	6	6	6
Fresh Water Capacity (Gallon)	40	40	40	40	40	40	40	40	40	40	40	40
Black Water Capacity (Gallon)	32	32	32	32	32	32	32	32	32	32	32	32
Gray Water Capacity (Gallon)	32	32	64	32	32	64	32	64	32	32	32	64
LP Gas Capacity (Lbs.)	40	40	40	40	40	40	40	40	40	40	40	40
Furnace BTUs (1,000s)	30	30	30	30	30	30	30	30	30	30	30	30
Tire Size	15"	15"	15"	15"	15"	15"	15"	15"	15"	15"	15"	15"
Awning	18'	18'	20'	18'	20'	20'	20'	11'/12'	18'	18'	10'/10'	11'/15'

\*This weight reflects the rolling average unit weight for each model. Your trailer weight will vary according to optional equipment.



985 N 900 W • Shipshewana, IN 46565  
[www.venture-rv.com](http://www.venture-rv.com)

Due to continual research and advances, manufacturer reserves the right to change specifications, design, price and equipment without notice, and assumes no responsibility for any error in this literature. Some items shown are not included as standard or optional equipment. ©2018 Venture | 12/12/18 | 25M