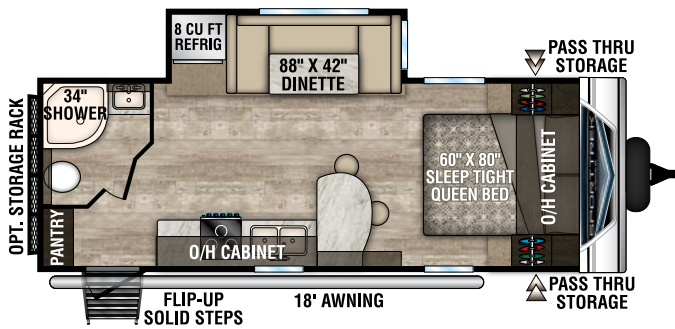


SPORTTREK

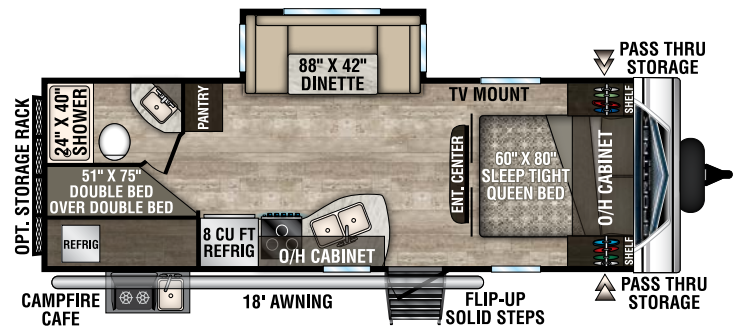
Lightweight Travel Trailers



2019 Décor



ST221VRB **NEW**



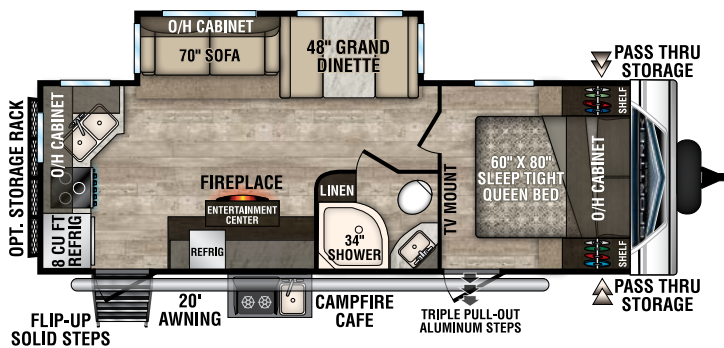
ST251VBH



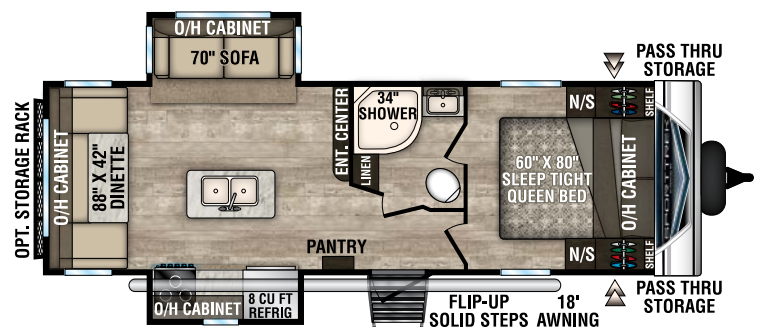
ST251VRK
Slideout
Options



ST252VRD
Slideout
Options



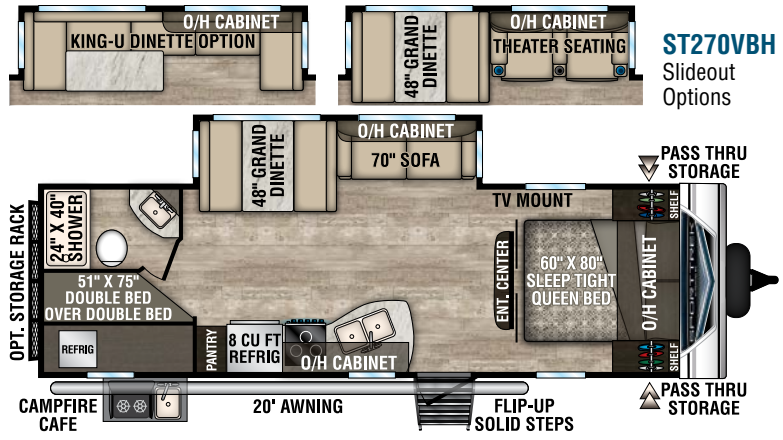
ST251VRK



ST252VRD

SLEEPER

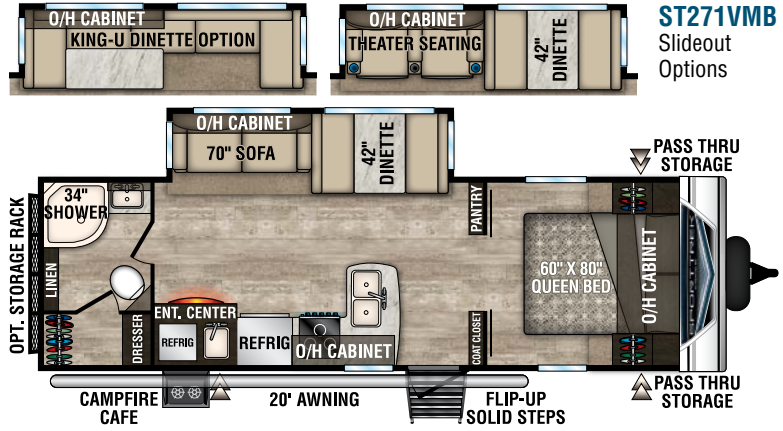
ST270VBH



ST270VBH
Slideout Options

ST271VMB

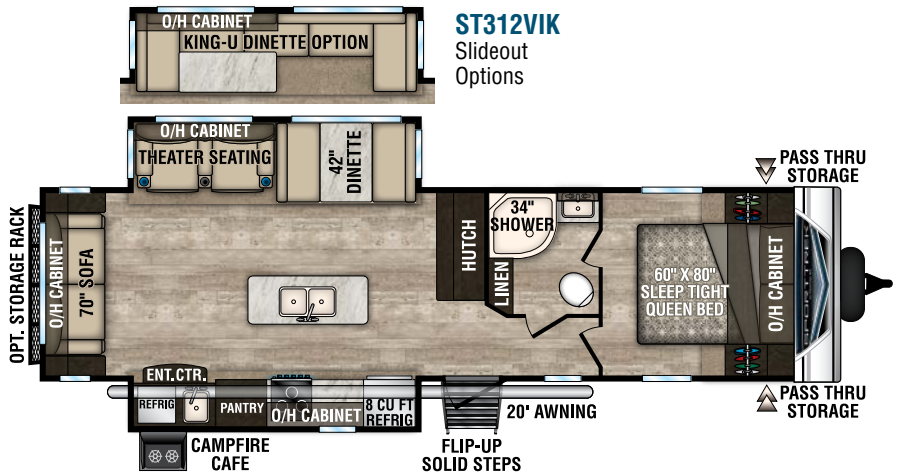
NEW



ST271VMB
Slideout Options

ST312VIK

NEW



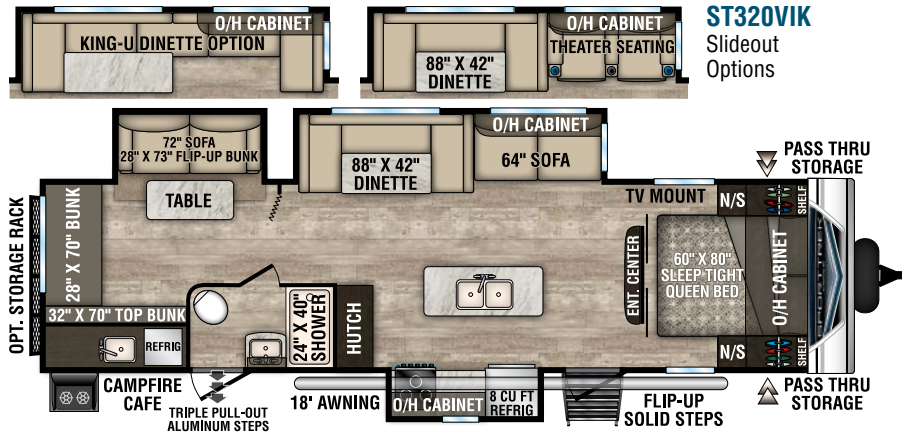
ST312VIK
Slideout Options

ST312VRK

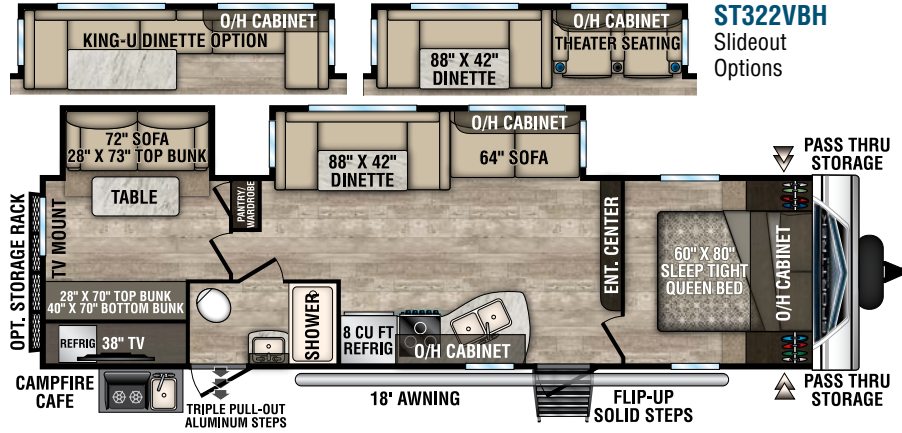


ST312VRK
Slideout Option

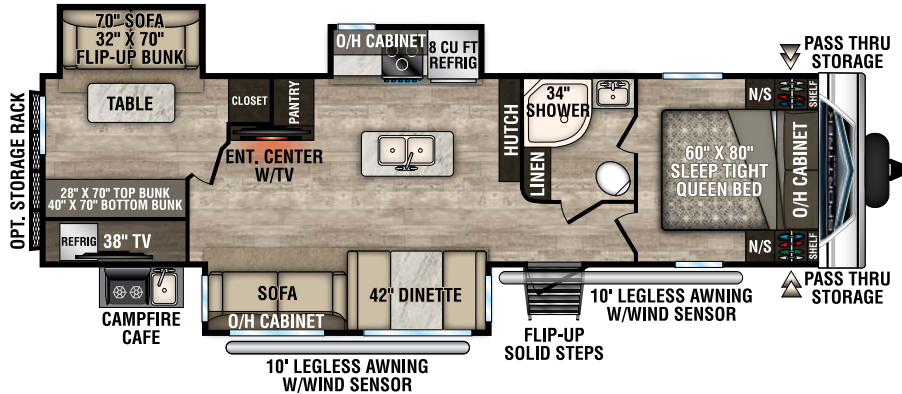
ST320VIK



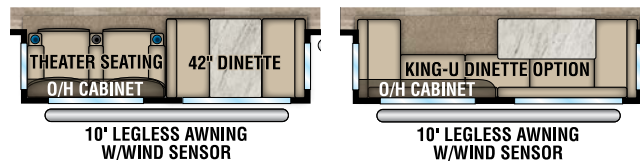
ST322VBH



ST327VIK

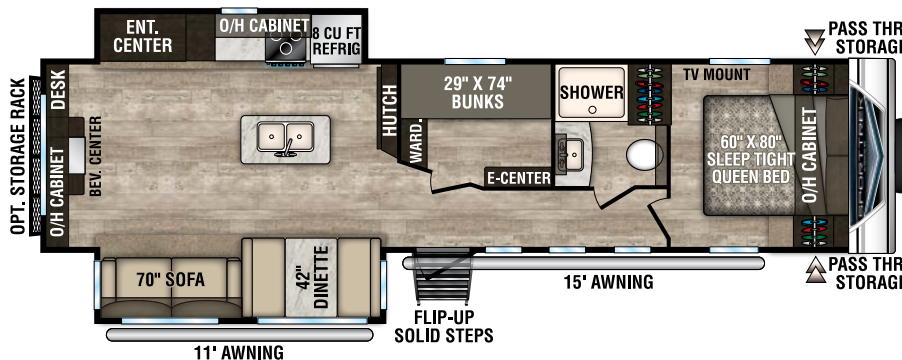


ST327VIK

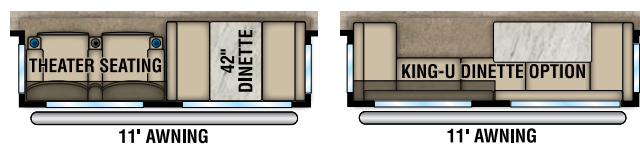


ST342VMB

NEW



ST342VMB



Living Room/Kitchen

- Built-In Radius Entertainment Center w/ Shoe Cubby (VBF)
- High Efficiency LED Lighting
- Panoramic Opening Slideout Windows
- Mortise & Tenon Hardwood Cabinet Doors
- Tilt-Out Utility Tray
- High-Rise Satin Nickel Faucet w/Sprayer
- Cutting Board Sink Cover
- Comfort by Design® Grand Dinette
- Comfort by Design® Sofa
- Flush-Mount Interior Speakers

Appliances

- 3-Burner Flush Mount Stovetop w/Oven & Glass Top
- Vented Range Hood w/Light
- Coleman® Whisper A/C

Bath

- Foot-Flush Porcelain Toilet
- Multi-Shelf Shower or Tub
- Designer Shower Curtain (VBF)
- Mirrored Medicine Cabinet

Bedroom

- 60" x 80" Sleep Tight® Mattress
- Teddy Bear® Bunk Mattress(s)
- Solid Wood Nightstands
- Full Length Closets w/Easy Access Nightstands w/USB Port (110 outlet)
- (2) Gas Struts for Large Under-Bed Storage
- Solid Wood Privacy Door(s) (most models)
- TV & Satellite Connections
- Hard Valances
- Nightshades
- StorMore Nightstands (CPAP sized)

Exterior/Construction

Features

- Two-Tone White & Grey Exterior Fiberglass

- Carbon Fiber Look Rock Guard
- EZ Access® LP Tank Cover
- Large Pass-Thru Baggage Doors (cooler-sized)
- Wide-Trek® Axles
- Self-Adjusting Brakes
- Deep Slides w/Colored Slideout Ends
- Tinted Safety Glass Windows
- Hitch Light
- Omni Directional Digital Antenna Receiver
- Large Assist Grab Handle
- Cable/Satellite Connection (2 locations)
- (2) Marine-Grade Exterior Speakers
- Gutter w/Downspouts
- Gutters above Slideouts
- Extra-Long Awnings
- 15" Radial Tires
- Walkable Roof
- Hot & Cold Exterior Shower
- 6-Gallon Gas/Electric DSI Water Heater
- Marine Grade Detachable Power Cord w/Light
- Prewired for Furrion Solar & Observation Camera
- (4) Ground Effect Blue LED Lights
- Magnetic Baggage Door Catches
- Keyed Alike Key System
- Battery Disconnect
- Microwave w/Turtable
- Safe-Tek Hidden Storage w/Charging Center
- (2) USB Charging Ports (Bedroom)
- 82" Interior Ceiling
- 72" Slideout Height
- Overhead Storage in Slideouts
- Skylight w/Shade
- Pleated Nightshades
- Seamless Surf(X) Countertops, Sink Covers and Tabletops
- Stainless Steel Undermount Sink
- Hardwood Cabinet Doors & Drawer Faces
- Full-Extension Ball Bearing Drawer Guides
- Pots & Pans Drawer
- Adjustable Pantry Shelves (most models)
- Shoe Cubby (varies by floorplan)
- Full Length Closets w/StorMore Nightstands
- Designer Padded Headboard
- Quilted Comforter
- Residential Carpet
- Wood Linoleum Flooring w/3-Year Warranty
- Radius Glass Shower Enclosure (VBF)
- Porcelain Foot Flush Toilet
- Bluetooth Stereo AM/FM/DVD/CD/MP3

Level Mate Pro (Mandatory)

- Venture Exclusive Wireless RV Leveling System

Weather-Shield Package (Mandatory)

- Forced heat
- Enclosed underbelly
- Enclosed Gate Valves
- Radiant Foil Barrier

Trek Package (Mandatory)

- Friction Hinge Entry Door
- Interior Entry Door Motion Light
- Pass-thru Storage Motion Light
- Mountain Walnut Interior Wood
- Tufted Dinette Cushions
- Stainless Steel Appliances
- 5/8" Tongue & Groove Plywood Floor Decking
- NXG Huck Bolt Frame
- EZ Lube Hubs
- (4) Secure Stance Angled Stabilizer Jacks
- (2) 20 LB Easy Exchange LP Tanks

- 50 AMP Service w/2nd A/C Prep
- 2nd A/C (50A w/Prep Req'd)
- Table/Chairs IPO Booth (N/A 251VBH)
- Tri-Fold Sofa (Std 312VRK, N/A 251VBH)
- Theater Seats (Std 312VRK & 312VIK, N/A 251VBH)
- Upgraded Mattress
- 15,000 BTU A/C
- Flip-Up Cargo Tray (Prep Std)
- Aluminum Rims
- Lighted Power Tongue Jack
- (2) Legless Awnings w/Wind Sensors (327VIK)
- Swing Away Bumper Mount Grill
- King "U" Sofa (N/A 221VRB, 251VBH, 252VRD)
- 3/4 Front Cap
- Furrion Observation/Backup Camera
- (4) Independent Power Stabilizer Jacks
- Power Awning w/LED Lights

Expedition Package (Optional)

- Flip-up Solid Step (Main Door)
- Venture Bottle Opener/Dog Tie Down
- Jiffy w/Fold Down Center Console
- Flush-Mount Stove/Oven w/back light
- 8 CU FT Refrigerator
- Tile Back Splash
- LED Power Awning
- High Polished Aluminum Rims w/Black accents
- Flip-up Cargo Tray
- Power Tongue Jack

Trail Package (Optional)

- Spare Tire/Carrier/Cover
- Ladder
- Black Tank Flush

Entertainment Package (Optional)

- 40" HD LED TV w/ Swing-Arm Bracket

Options

- Frameless Fireplace (STD on 251VRK, 271VMB, 327VIK) (N/A 221VRB)

Travel Trailers	ST221VRB	ST251VBH	ST251VRK	ST252VRD	ST270VBH	ST271VMB	ST312VIK	ST312VRK	ST320VIK	ST322VBH	ST327VIK	ST342VMB
UVW (Unloaded Vehicle Weight)*	5,230	5,550	5,940	5,940	5,950	6,390	7,390	7,260	7,700	7,390	8,070	7,870
Dry Hitch Weight*	520	710	630	680	690	730	730	740	900	740	840	840
Dry Axle Weight*	4,710	4,840	5,310	5,260	5,260	5,660	6,660	6,520	6,800	6,650	7,230	7,030
NCC (Net Carrying Capacity)	1,770	1,450	1,060	1,060	1,050	1,910	910	1,040	900	1,210	1,530	1,730
GVWR	7,000	7,000	7,000	7,000	7,000	8,300	8,300	8,300	8,600	8,600	9,600	9,600
Interior Height	82"	82"	82"	82"	82"	82"	82"	82"	82"	82"	82"	82"
Exterior Height with A/C	11' 4"	11' 2"	11' 2"	11' 2"	11' 2"	11' 4"	11' 4"	11' 4"	11' 4"	11' 4"	11' 6"	11' 6"
Exterior Width	96"	96"	96"	96"	96"	96"	96"	96"	96"	96"	96"	96"
Exterior Length	26' 5"	28' 7"	28' 7"	29' 5"	30' 8"	30' 11"	34' 11"	35' 1"	35' 11"	35' 11"	36' 4"	37' 11"
Refrigerator (Cubic Feet)	8	8	8	8	8	8	8	8	8	8	8	8
Water Heater Cap. (Gal. Gas w/DSI)	6	6	6	6	6	6	6	6	6	6	6	6
Fresh Water Capacity (Gallon)	40	40	40	40	40	40	40	40	40	40	40	40
Black Water Capacity (Gallon)	32	32	32	32	32	32	32	32	32	32	32	32
Gray Water Capacity (Gallon)	32	32	64	32	32	64	32	64	32	32	32	64
LP Gas Capacity (Lbs.)	40	40	40	40	40	40	40	40	40	40	40	40
Furnace BTUs (1,000s)	30	30	30	30	30	30	30	30	30	30	30	30
Tire Size	15"	15"	15"	15"	15"	15"	15"	15"	15"	15"	15"	15"
Awning	18'	18'	20'	18'	20'	20'	20'	11'/12'	18'	18'	10'/10'	11'/15'

*This weight reflects the rolling average unit weight for each model. Your trailer weight will vary according to optional equipment.



985 N 900 W • Shipshewana, IN 46565
www.venture-rv.com

Due to continual research and advances, manufacturer reserves the right to change specifications, design, price and equipment without notice, and assumes no responsibility for any error in this literature. Some items shown are not included as standard or optional equipment. ©2018 Venture | 12/12/18 | 25M