

# SPORTTREK

TOURING EDITION  
Luxury Travel Trailers





The SportTrek Touring line of luxury travel trailers offers thoughtful new features and fresh, elegant design elements inspired by people who love camping. The sophisticated residential kitchen is a highlight of Touring, with rich Mountain Walnut cabinetry, solid-surface countertops, an under-mount stainless steel sink with pull-down sprayer faucet, and recessed gas cooktop with glass cover for added counter space.

A sleek new exterior look includes pearl-infused fiberglass sidewalls with automotive-quality graphics. The Weather-Shield Package also debuts this year, with insulation components that let you extend the camping season. With so many versatile layouts, you're sure to find the perfect floorplan.





STT343VRK ▼ Latte décor



STT293VRK ▼ Granite décor

Entertainment center with Furrrion Bluetooth stereo AM/FM/DVD/MP3, fireplace, frosted cabinet accents and decorative shelving.



STT293VRK ▼ Granite décor

All bedrooms feature a full dresser with cozy fireplace and open space below for shoe storage.

Touring is designed for comfort and storage, with panoramic windows and wider doorways throughout. Cabinetry features frosted glass accents, and additional perks include overhead slideout cabinets, entry door motion light, kitchen pantry, bathroom linen closet and 82-inch ceilings throughout.



STT293VRK ▼ Granite décor

The slideout king bedroom features overhead cabinets, dresser and bench seat, plus two full-length closets, corner nightstands, under-bed storage, and fireplace!



STT343VRK ▼ Latte décor

The bedroom's window seat doubles as storage, with full-length his-and-hers closets on either side. LED-lit overhead accent shelving and durable valance with nightshade complete the serenity.



STT343VBH ▼ Latte décor



Touring's dream kitchens feature dark Mountain Walnut cabinetry, solid-surface counters and a stylish woodgrain-and-metal backsplash. A stainless steel under-mount sink with pull-down sprayer faucet adds to the functionality and good looks.





Additional kitchen features include an 8-cubic-foot refrigerator, three-burner high-output range with flush-mount glass cover, built-in oven and overhead microwave. You'll appreciate the oversized heavy-duty pots and pans drawer and waste basket storage.

Deluxe 60- and 70-inch tri-fold sofa/hide-a-beds fold down with ease.



Theater seating features heat, massage and LED accent lights. Controls are built into the rim of the cup holder – no extra remote to keep track of! Seats recline together or individually.

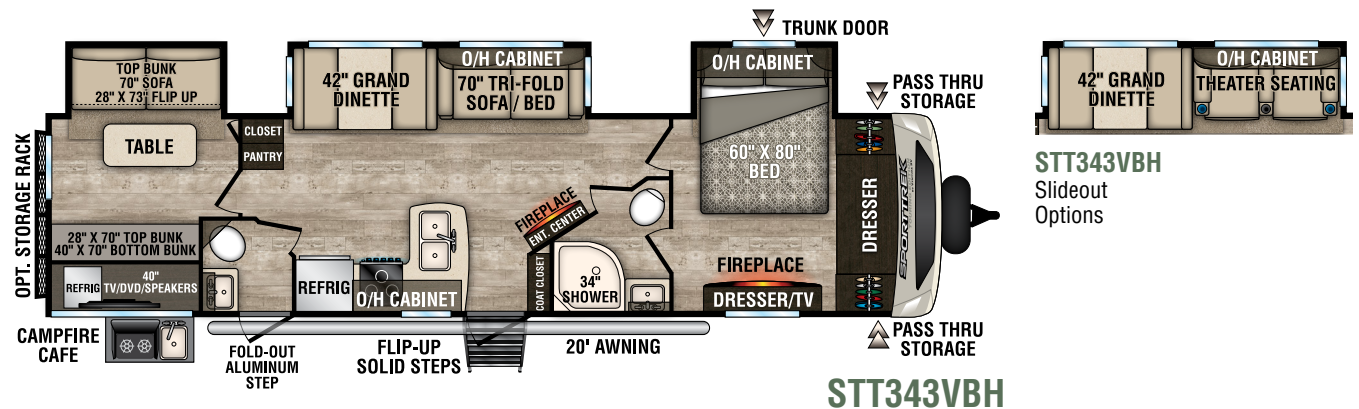
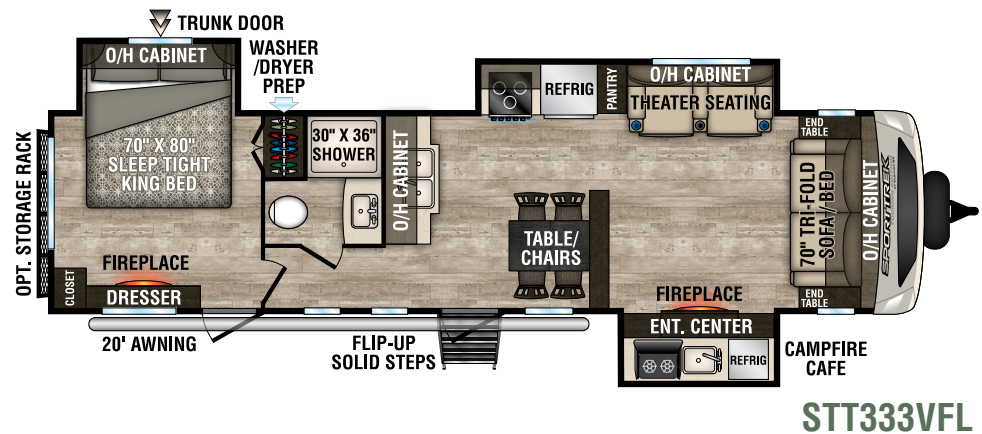
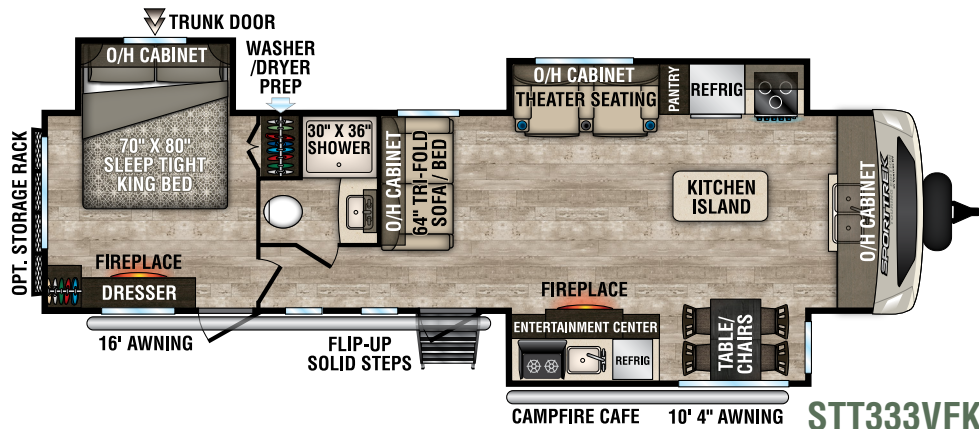
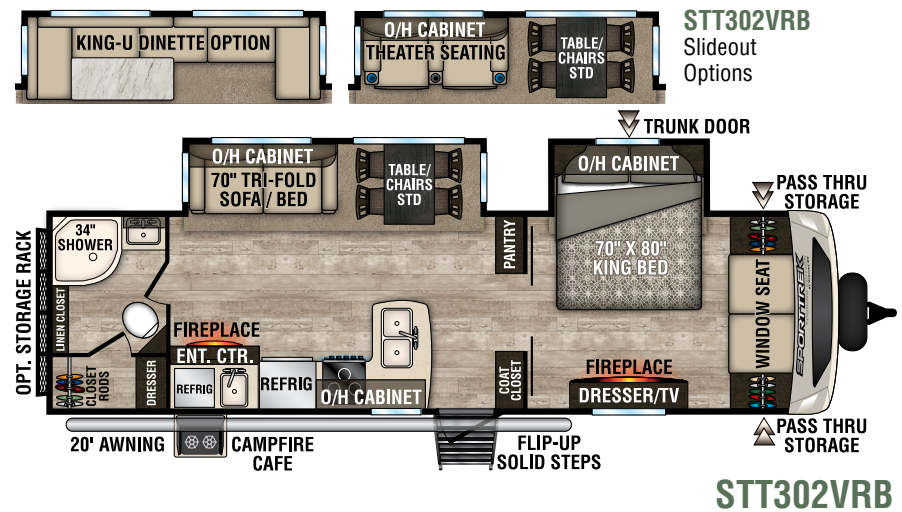
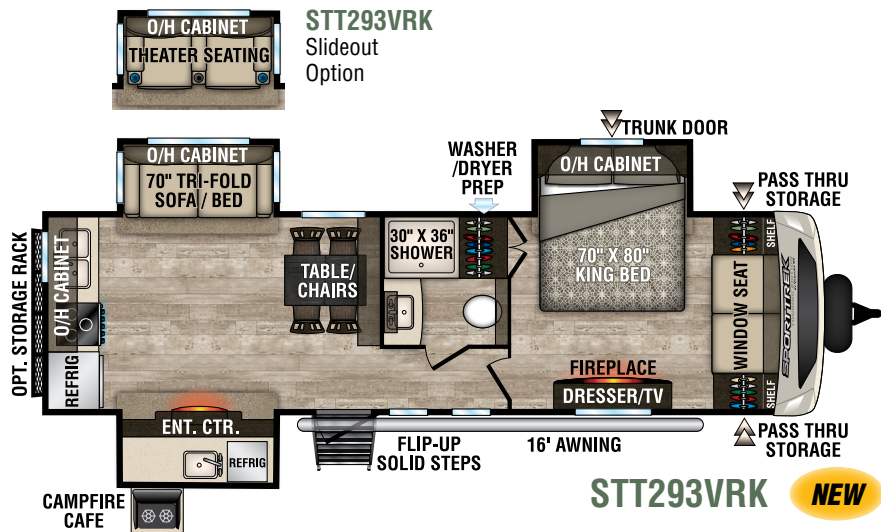


The 343VBH offers a triple duty rear living area with removable second table top. A 70-inch sofa and flip-down bunk provide extra sleeping space. In addition, the sofa converts to a 28 x 73-inch bed.



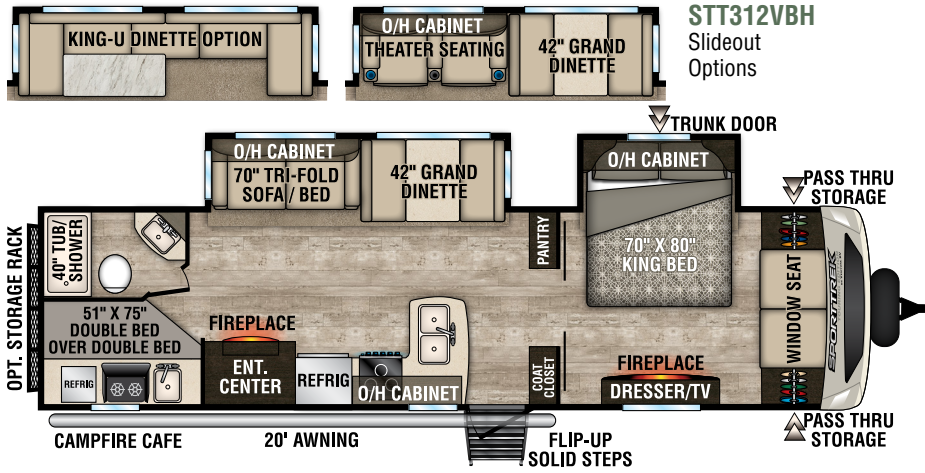


## FLOORPLANS

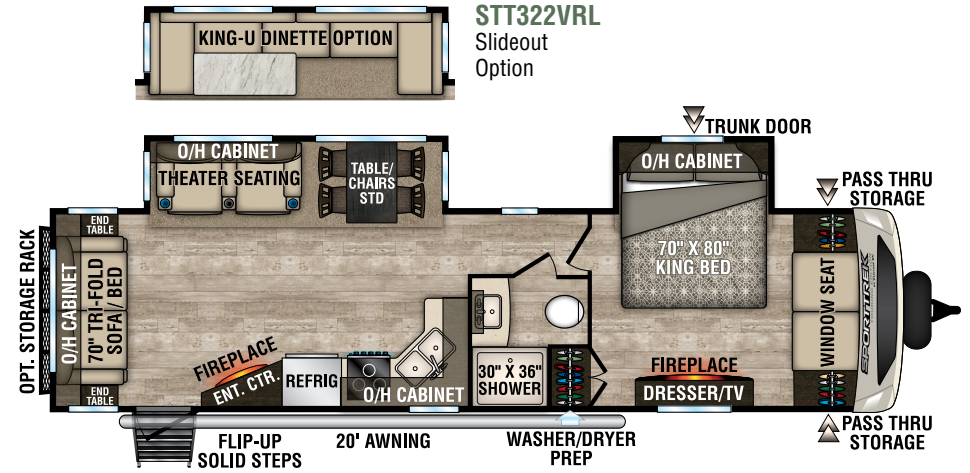




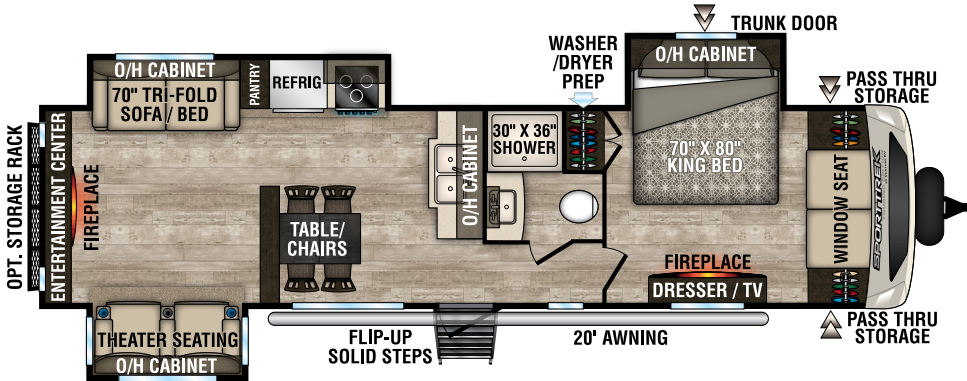
# FLOORPLANS



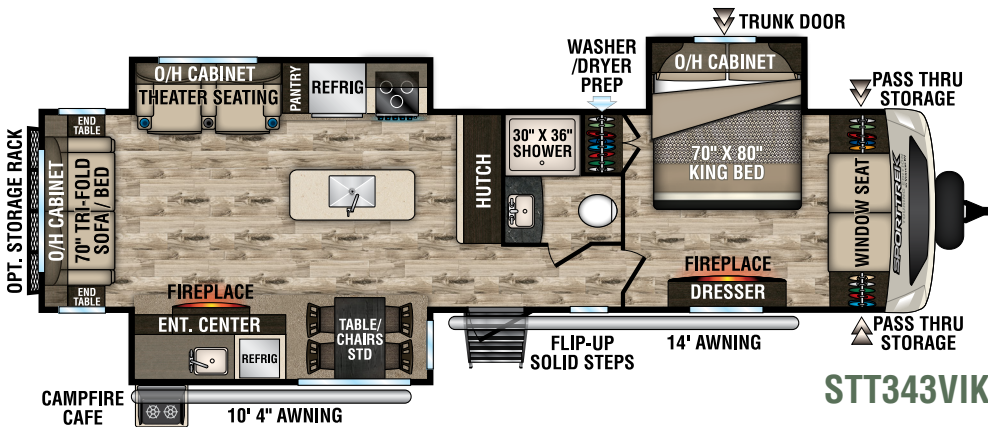
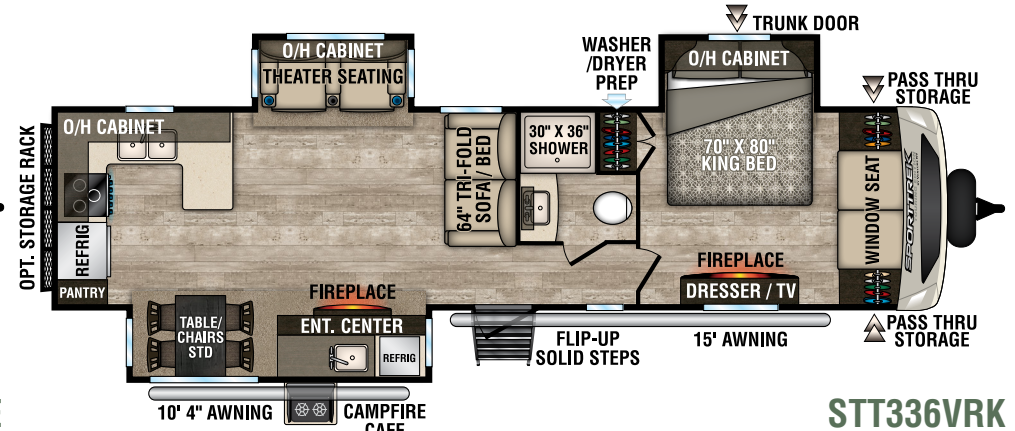
**STT312VBH**



**STT322VRL**



**STT333VRE**





# STANDARDS & OPTIONS

## Living Room/Kitchen

- Skylight w/Shade
- Tilt-Out Utility Tray
- Overhead Cabinet Storage in Slideout
- Flush-Mount Interior Speakers
- Freestanding Table & 4 Chairs (varies by F/P)
- Islands Feature Hidden Wine Storage
- Waste Basket Storage

## Bath

- Skylight
- Mirrored Medicine Cabinet
- Power Vent
- Linen Closet (floorplan specific)

## Bedroom

- Sleep Tight® Foam Mattress
- USB/110V Outlet above Bed
- Overhead Cabinets in Bedroom & Slideouts
- (2) Gas Struts for Under-Bed Storage
- Solid Wood Privacy Door(s)
- TV & Satellite Connections
- Window Seat Storage

## Exterior/Construction Features

- EZ Access® LP Tank Cover
- Wide-Trek® Axles
- Self-Adjusting Brakes

- Deep Slides w/Colored Slideout Ends
- Digital Antenna Receiver
- Keyed Alike Key System
- Large Assist Grab Handle
- Cable/Satellite Connection (2 locations)
- (2) Marine-Grade Exterior Speakers
- Alpha Superflex® Roof Material
- Gutter w/Downspouts
- Gutters above Slideouts

## Weather-Shield Package (Mandatory)

- Forced heat
- Enclosed underbelly
- Enclosed Gate Valves and Radiant Foil Barrier

## Touring Package (Mandatory)

- Automotive Panoramic Front Window
- Window Seat (most models)
- Friction Hinge Entry Door
- Interior Entry Door Motion Light
- Pass-thru Motion Light
- Mountain Walnut Interior Wood
- Stainless Steel Appliances
- Pearl Infused Exterior Fiberglass
- 5/8" Tongue & Groove Plywood Floor Decking
- NXG Huck Bolt Frame
- EZ Lube Hubs
- Undermount Spare Tire

- Rear Ladder
- Walkable Roof
- Exterior Shower w/Hot & Cold Water
- 6-Gallon Gas/Electric DSI Water Heater
- Black Tank Flush System
- Furrion Marine Grade Detachable Power Cord
- Prewired for Furrion Solar and Backup Camera
- Stabilizer Accent Lighting
- Lighted Pass-thru Storage
- 15K BTU A/C
- 50 Amp Service w/2nd A/C Prep
- LED Lighted Power Awning
- Keyed Alike Key System
- Battery Disconnect
- 8 CU FT Refrigerator
- 3-Burner Hi-Output Range w/Flush-Mount Glass Cover
- Microwave
- Safe-Tek Hidden Storage w/Charging Center
- 82" Interior Ceiling
- 72" Slideout Height
- Full-Extension Ball Bearing Drawer Guides
- Furrion Bluetooth Stereo AM/FM/DVD/CD/MP3
- Flip-up Solid Step

## Exterior Luxury Package (Mandatory)

- Painted Fiberglass Front Cap w/Integrated LED Light
- Upgraded Graphics Package
- (4) BAL Independent Electric Stabilizer Jacks
- Lighted Power Tongue Jack
- Frameless Tinted Windows
- Slam-Latch Baggage Doors with Magnetic Catches
- 15" Radial Tires w/Highly-Polished Aluminum Rims

## Interior Luxury Package (Mandatory)

- Solid-Surface Kitchen Countertops
- Undermount Stainless Steel Sink
- Designer Valances with Fabric Night Shades
- Chair Rail
- Solid Hardwood Cabinet Doors & Drawer Faces
- Residential Carpet
- Wood Plank Linoleum Flooring w/3-yr Warranty
- Porcelain Toilet
- Quilted Comforter w/Pillow shams
- Deluxe Tri-Fold Sofa & Theater Seats (varies by F/P)
- King Bed Master Suite (where available)

## Level Mate Pro (Mandatory)

- Venture Exclusive Wireless RV Leveling Systems

## Elite Package (Optional)

- Washer & Dryer Prep (varies by F/P)
- Venture Bottle Opener/Dog Tie Down
- Theater Seating w/Heat Message & Lighting
- Designer Backsplash
- Stainless Steel Pull Down Faucet
- Frameless Fireplace
- 30 LB LP Tanks w/Cover
- Screen Shot Screen Door
- Cargo Tray/Bike Rack
- Upgraded Mattress
- LED HD TV w/Swing Arm

## Options

- Booth Dinette
- Table & Chairs
- Maxx Air Fan in Bedroom
- 2nd A/C
- 40" TV w/Swing Arm Bracket
- 50" TV w/SA Bracket (333VRE Only)
- King "U" Sofa (N/A 293VRK, 333VFK, 333VFL, 333VRE, 336VRK, 343VIK)
- Theater Seating IPO Trifold (293, 302, 312)
- Cargo Tray (prep Standard)
- Upgrade Mattress
- Swing-Away Bumper Mount Grill
- Furrion Observation/Backup Camera



# SPECIFICATIONS

Travel Trailers	STT293VRK	STT302VRB	STT312VBH	STT322VRL	STT333VFK	STT333VFL	STT333VRE	STT336VRK	STT343VBH	STT343VIK
UVW (Unloaded Vehicle Weight)*	7,600	7,270	7,540	7,580	8,780	8,260	8,150	8,570	8,660	8,700
Dry Hitch Weight*	810	1,020	1,050	1,010	1,200	1,290	1,010	1,030	1,070	1,020
Dry Axle Weight*	6,790	6,250	6,490	6,570	7,580	6,970	7,140	7,540	7,590	7,680
NCC (Net Carrying Capacity)	700	1,030	1,260	1,220	1,215	1,735	1,845	1,425	1,335	1,295
GVWR	8,300	8,300	8,800	8,800	9,995	9,995	9,995	9,995	9,995	9,995
Interior Height	82"	82"	82"	82"	82"	82"	82"	82"	82"	82"
Exterior Height with A/C	11' 4"	11' 4"	11' 4"	11' 4"	11' 6"	11' 6"	11' 6"	11' 6"	11' 6"	11' 6"
Exterior Width	96"	96"	96"	96"	96"	96"	96"	96"	96"	96"
Exterior Length	32' 11"	33' 6"	34' 11"	35' 11"	36' 11"	36' 11"	36' 11"	37' 8"	37' 11"	37' 8"
Refrigerator (Cubic Feet)	8	8	8	8	8	8	8	8	8	8
Water Heater Capacity (Gal. G/E w/DSI)	6	6	6	6	6	6	6	6	6	6
Fresh Water Capacity (Gallon)	40	40	40	40	40	40	40	40	40	40
Black Water Capacity (Gallon)	32	32	32	32	32	32	32	32	64	32
Gray Water Capacity (Gallon)	64	64	32	32	64	32	32	64	64	32
LP Gas Capacity (Lbs.)	60	60	60	60	60	60	60	60	60	60
Furnace BTUs (1,000s)	30	30	30	30	30	30	30	30	30	30
Tire Size	15"	15"	15"	15"	15"	15"	15"	15"	15"	15"
Awning	16'	20'	20'	20'	16'/10' 4"	20'	20'	15'/10' 4"	20'	14'/10' 4"

\*This weight reflects the rolling average unit weight for each model. Your trailer weight will vary according to optional equipment.

## SELECT FEATURES

### Level it on the First Try!



The LevelMatePRO option calculates and displays the height required to achieve a perfectly level position.

An arrow is displayed to indicate where the height needs to be added, further simplifying what has traditionally been a lot of guesswork and very time consuming.

Simply level, using the height indicated and when the red level indicator turns green, you're done!

**LevelMatePRO**  
Wireless Vehicle Leveling System



SportTrek Touring's Weather Shield features a radiant foil barrier, forced heat, enclosed underbelly and enclosed gate valves.

### DÉCOR





# INTERIOR STANDARDS & OPTIONS



Two-door 8-cubic-foot refrigerator with freezer and veggie bin.



Pantry with deep, spacious shelving.



Three-burner gas cooktop with glass cover, metal-and-wood backsplash and built-in oven with LED knob accent lighting.



Stainless steel, deep-seated, under-mount, double bowl kitchen sink with high-rise, pull-down sprayer faucet.



No space wasted; bonus cabinet at the end of the island.



Heavy-duty kitchen drawer for large cookware, with full-extension ball bearing drawer glides.



Standard washer/dryer prep gives more options for freedom while traveling (most models.)



And even more storage! Two durable 36-inch portable bins can be packed in the house, then securely stored beneath the dinette benches.



Spacious Safe-Tek hidden storage compartment for charging devices with USB and 110 V outlets.



Skylight with built-in shade lets in the light but keeps out the glare.



Optional King-U dinette seating accommodates large families comfortably, with 13 feet of seating in the slide, which easily converts to additional sleeping space.



Full length his-and-hers closets with stylish heavy-duty double doors.



Large under-bed storage for extra items like blankets and sleeping bags. Storage space can be accessed from both inside and outside.



Entry closet with coat hooks in some models helps keep clutter at bay.



# EXTERIOR STANDARDS & OPTIONS



Standard flip-up entry step with large folding grab handle provide solid footing, and folds up in one easy motion.



Fold-down ladder provides secure roof access to the walkable roof.



Power awning with LED light strip, for outdoor gatherings or cooking around the Campfire Café.



Two marine-grade exterior speakers with LED accent lighting.



Optional flip-up storage rack, for cargo or two bicycles, folds flush when not in use.



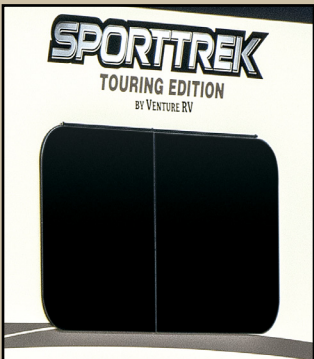
Solar prep for off-grid use.



Sturdy exterior wall-mounted bottle opener doubles as a pet tie-down.



Backup prep is wired for Furrion backing/observation camera.



Stylish tinted, frameless windows provide privacy and insulation.



One-piece full fiberglass painted front cap includes integrated tinted high-end automotive-glass front window, which provides privacy and panoramic views.

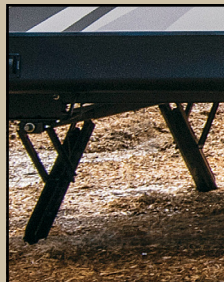
Outdoor Campfire Café may include cooktop, refrigerator, wash-up station, and LED TV (F/P specific).



Standard cable and satellite hookups.



Handy exterior battery disconnect.



Four power jacks, each with its own independent motor.



Lighted tongue-level allows for day or night set-up.



Generous cooler-sized pass-thru storage compartment with motion lighting, magnetic catches and slam-latch doors, for easy loading and unloading.



Nitrogen-filled 15-inch radial tires with black-accented high-polish aluminum rims.



# DOWNLOAD YOUR FREE

KZ RV APP TODAY!

Owning and operating an RV has never been easier. Everything you need is now in the palm of your hand.



Track RV Maintenance



Keep RV Service Close



Set Custom Notifications



Reference Checklists  
for RV Trips



DOWNLOAD  
NOW!



VISIT [KZ-APP.COM](http://KZ-APP.COM) TO LEARN MORE.



*Due to continual research and advances, manufacturer reserves the right to change specifications, design, price and equipment without notice, and assumes no responsibility for any error in this literature. Some items shown are not included as standard or optional equipment.*

©2019 Venture  
1/24/19 | 60M

985 N 900 W, Shipshewana, IN 46565  
[www.venture-rv.com](http://www.venture-rv.com)

Dealer:



**SPORTTRAILER**  
**TOURING EDITION**  
Luxury Travel Trailers