

# STRATUS

Ultra-Lite Travel Trailers



Victory Red

Indigo Blue

Aztec Gray

Polar White

**Ultra-Lite Travel Trailers with a Modern Flare!**





# STRATUS

Ultra-Lite Travel Trailers



*Stratus has it all ... an eye-catching exterior, stunning decor and a long list of exciting standard features. Not to mention there's tons and tons of storage, including loads of clever concealed spaces to stash more stuff. This affordable ultra-lite travel trailer has got the goods, with a fresh, modern vibe like nothing else out there.*

Kitchens feature a cool LED-lit backsplash, with window to welcome in natural light. The gas range with glass cover adds valuable counter space, with the oven below, just like home. The LED TV and multi-media stereo, DVD and wireless connectivity are perfect for indoor camping, and the optional 40-inch fireplace takes the edge off cool mornings and chilly nights. The discreet cubby below the fireplace stores Rover's doggie dish, or lets you keep shoes handy.

SR271 VRS ▼ Coco décor





SR261VRL ▼ Coco décor



SR271VRS ▼ Coco décor

The optional theater seating offers heat/massage features and LED accent lighting at the cup holder and base of the chair.



The heat, massage and LED lighting controls are built into the rim of the cup holder – no extra remote to keep track of. Each seat has its own cup holder/set of controls.

Contrasting light and dark woodwork gives a nod to today's mixed cabinetry aesthetic, with Alpine White nicely offsetting the dark Mountain Walnut.



SR261VRL ▼ Coco décor

Baths, with corner vanity, feature standard glass radius shower, porcelain toilet and a floor-to-ceiling linen closet.

Kids love having their own special area. The spacious bunkhouse is fun, functional and comfortable, with a sturdy fixed ladder and lookout windows on both levels. Ample open-shelf storage gives easy access to toys and games, and the under-bed space accommodates backpacks and plenty of other large items.



SR281VBH ▼ Coco décor

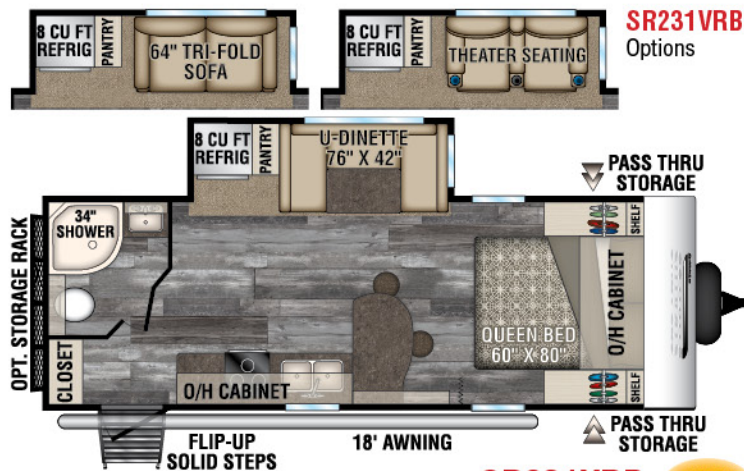


SR281VBH ▼ Coco décor

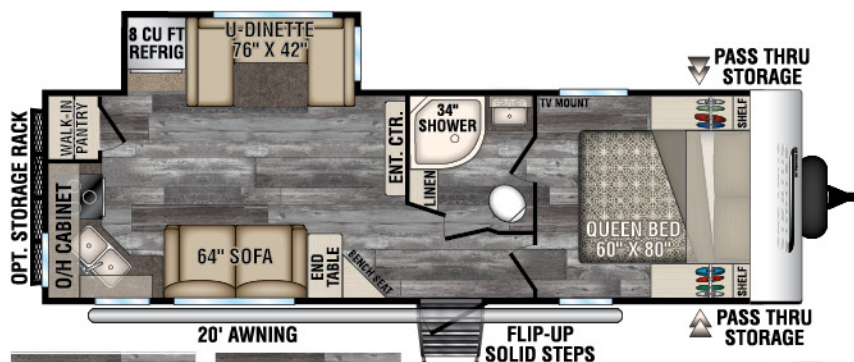
The 60 x 80-inch True Residential queen bed offers storage beside, above and below. USB ports, 110V outlet and light switches are all within reach, as is CPAP nightstand storage. Tall shirt cabinets on both sides allow for clothes on hangers. The bed lifts to reveal spacious storage, and overhead cabinet accent lighting completes the scene.







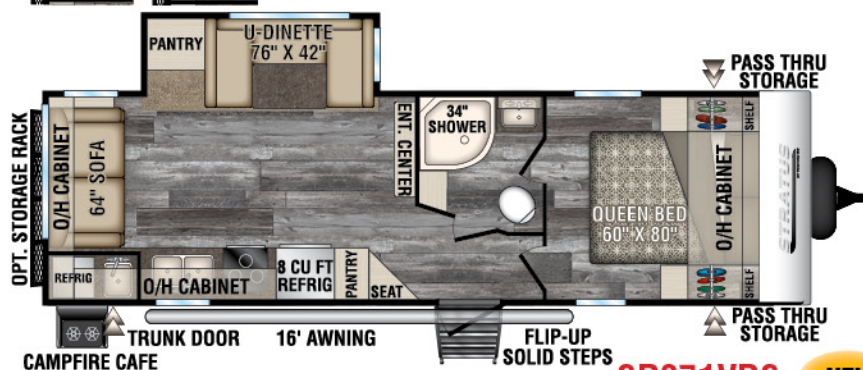
**SR231VRB** **NEW**



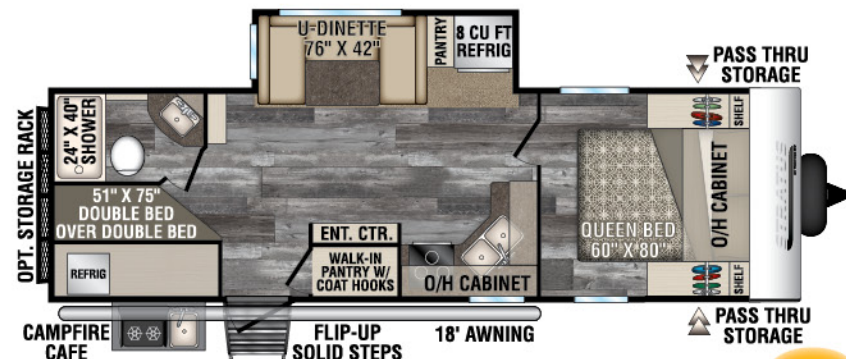
**SR261VRK** **NEW**  
Options



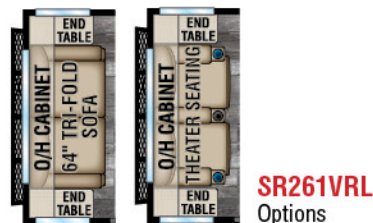
**SR271VRS**  
Options



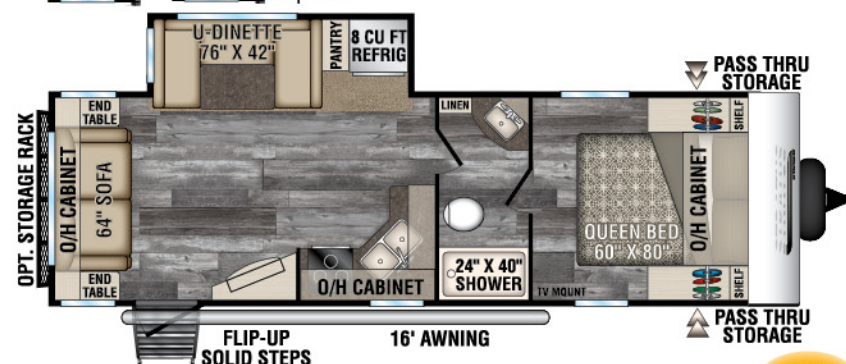
**SR271VRS** **NEW**



**SR261VBH** **NEW**



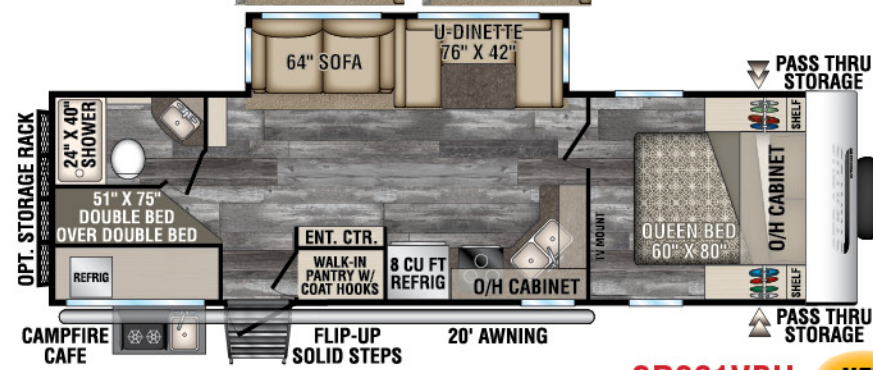
**SR261VRL**  
Options



**SR261VRL** **NEW**



**SR281VBH**  
Slideout  
Options



**SR281VBH** **NEW**



# EXTERIOR FEATURES



| Travel Trailers                    | SR231VRB        | SR261VBH        | SR261VRK        | SR261VRL        | SR271VRS        | SR281VBH        |
|------------------------------------|-----------------|-----------------|-----------------|-----------------|-----------------|-----------------|
| UVW (Unloaded Vehicle Weight)*     | 5,240           | TBD             | 5,850           | 5,860           | 5,890           | 6,270           |
| Dry Hitch Weight*                  | 560             | TBD             | 590             | 590             | 610             | 670             |
| Dry Axle Weight*                   | 4,680           | TBD             | 5,260           | 5,270           | 5,280           | 5,600           |
| NCC (Net Carrying Capacity)        | 1,760           | TBD             | 1,150           | 1,140           | 1,110           | 2,030           |
| GVWR                               | 7,000           | 7,000           | 7,000           | 7,000           | 7,000           | 8,300           |
| Interior Height                    | 82"             | 82"             | 82"             | 82"             | 82"             | 82"             |
| Exterior Height with A/C           | 10' 10"         | 10' 10"         | 10' 10"         | 10' 10"         | 10' 10"         | 10' 10"         |
| Exterior Width                     | 96"             | 96"             | 96"             | 96"             | 96"             | 96"             |
| Exterior Length                    | 26' 9"          | 30' 3"          | 30' 3"          | 30' 3"          | 30' 7"          | 32' 1"          |
| Refrigerator (Cubic Feet)          | 8               | 8               | 8               | 8               | 8               | 8               |
| Water Heater Cap. (Gal. Gas w/DSI) | 6               | 6               | 6               | 6               | 6               | 6               |
| Fresh Water Capacity (Gallon)      | 40              | 40              | 40              | 40              | 40              | 40              |
| Black Water Capacity (Gallon)      | 32              | 32              | 32              | 32              | 32              | 32              |
| Gray Water Capacity (Gallon)       | 32              | 64              | 64              | 64              | 64              | 64              |
| LP Gas Capacity (Lbs.)             | (2) 20# Bottles | (2) 20# Bottles | (2) 20# Bottles | (2) 20# Bottles | (2) 20# Bottles | (2) 20# Bottles |
| Furnace BTUs (1,000s)              | 30              | 30              | 30              | 30              | 30              | 30              |
| Tire Size                          | 205/75R15D      | 205/75R15D      | 205/75R15D      | 205/75R15D      | 205/75R15D      | 225/75R15E      |
| Awning                             | 18'             | 18'             | 20'             | 16'             | 16'             | 20'             |

\*This weight reflects the rolling average unit weight for each model. Your trailer weight will vary according to optional equipment.



# INTERIOR STANDARDS & OPTIONS



The glass range cover adds countertop space, and the lighted backsplash is just plain cool!



There's storage everywhere, which lets you pack more for the trip while keeping clutter at bay.



The kitchen is refreshingly residential, with Surf(x) seamless, easy-to-clean, durable countertops. The deep under-mount double-bowl stainless steel sink with pull-down sprayer and framed backsplash with LED lighting are on-point. A window with designer shade adds natural light.



All Stratus models come with a pantry near the refrigerator, and many of the floorplans feature a motion-lit walk-in pantry.



Let's face it, camping is all about eating. With the generous 8-cubic-foot refrigerator, you don't have to skimp on anything in this fully residential kitchen.



Entry bench doubles as storage.



The Safe-Tek® hidden storage box includes a 110 outlet and USB charger.



The U-shaped dinette provides roomy eating space by day, with large scenic-view windows.



By night it converts quickly and neatly to a comfortable sleep space, with soft LED backlighting that can serve as a nightlight.



Two huge 36-inch storage bins can be removed, taken into the house and packed with food, gear and clothes, and then easily slid out of sight under the dinette seats.





# EXTERIOR STANDARDS & OPTIONS



Status' Weather Shield features a radiant foil barrier, forced heat, enclosed gate valves, and enclosed underbelly on all floorplans.



## Level it on the First Try!

The LevelMatePRO option calculates and displays the height required to achieve a perfectly level position.

An arrow is displayed to indicate where the height needs to be added, further simplifying what has traditionally been a lot of guesswork and very time consuming.

Simply level, using the height indicated and when the red level indicator turns green, you're done!

**LevelMatePRO**  
Wireless Vehicle Leveling System



Campfire Café outdoor kitchen is equipped with a double-burner cooktop and cover, refrigerator and wash-up sink. This kitchen is just right for memories in the making (261VBH, 271VRS, 281VBH).



The optional flipup bike/cargo rack folds away completely when not in use.



Outside shower with hot and cold water.



Cable TV and satellite connections come in handy.



Battery quick disconnect.



Backup camera prep allows for easy installation of the optional backup camera.



Marine-grade detachable power cord with light.



Black tank flush.



Extended downspouts.



# DOWNLOAD YOUR FREE

KZ RV APP TODAY!

Owning and operating an RV has never been easier. Everything you need is now in the palm of your hand.



Track RV Maintenance



Keep RV Service Close



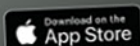
Set Custom Notifications



Reference Checklists  
for RV Trips



DOWNLOAD  
NOW!



VISIT [KZ-APP.COM](http://KZ-APP.COM) TO LEARN MORE.



*Due to continual research and advances, manufacturer reserves the right to change specifications, design, price and equipment without notice, and assumes no responsibility for any error in this literature. Some items shown are not included as standard or optional equipment.*  
©2019 Venture  
1/15/19 | 60M

985 N 900 W, Shipshewana, IN 46565  
[www.venture-rv.com](http://www.venture-rv.com)

Dealer:



# STRATUS

Ultra-Lite Travel Trailers