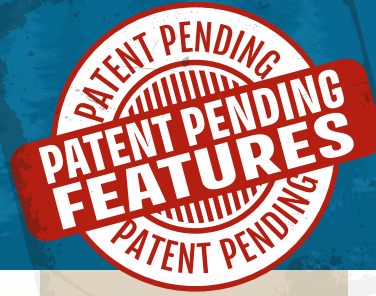




SONIC X

Travel Trailers



Living Room/Kitchen

- (2) Interior Speakers
- High Efficiency LED Lights
- Large Undermount Stainless Steel Single Bowl Sink
- Linoleum w/3-Year Warranty
- Roller Ball Bearing Drawer Guides
- Solid Wood Cabinets

Bath

- High Efficiency LED Lights
- Medicine Cabinet
- Residential Radius Shower w/ Glass Doors (SN220VRBX)

Bedroom

- Designer Valances
- High Efficiency LED Lights
- Murphy Bed w/Foam Mattress Upgrade
- Overhead Storage
- Pleated Nightshades
- StorMore Nightstands w/10
- Two Shirt Closets
- Under-Bed Storage

Exterior/Construction Features

- (2) Marine Grade Exterior Speakers
- Exterior Shower w/Hot & Cold Water
- EZ Exchange® (2) 20 LB LP Gas Tanks w/Auto Changeover
- High Efficiency Exterior LED Lighting
- High Gloss White Fiberglass Walls
- Laminated Sidewalls w/ Aluminum Framing
- Large Pass-Thru Storage

- Porch Light
- Power Cord w/Light
- Tank Monitor System
- Tinted Safety Glass Windows
- Water Heater Bypass Valve

Venture Levelmate System (Mandatory)

- Venture Exclusive Wireless RV Leveling System

Weather-Shield Package (Mandatory)

- 3 Piece Fiberglass Roof
- 360° Residential Fiberglass Insulation (360° = Roof, Floor, Front/Rear Walls)
- 360° Radiant Foil Insulation (360° = Roof, Floor, Front/Rear Walls)
- Forced-Air Heated & Enclosed Underbelly
- Radiant Foil Bubble Insulation Wrapped Tanks

Exterior Package (Mandatory)

- 5/8" Tongue & Groove Plywood Floor Decking
- 4" Tube Sewer Hose Storage
- Battery Disconnect Switch
- Carbon Fiber Look Rock Guard & Slide-Out End Walls
- Dedicated Cable and Satellite hookups
- Friction Hinge Entry Door
- Furrion Marine Grade Detachable Power Cord
- Hot & Cold Outside Shower
- Keyed-Alike Key System
- Large Grab Handle
- LED Lighted Power Awning
- Lighted Pass-thru Storage

- NXG Huck-Bolt Frame
- Prewired for Furrion Backup Camera
- Screen Shot Spring Screen Door
- Slam-Latch Baggage Doors w/ Magnetic Catches
- Solid Flip-Up Step
- Spread Axles w/Auto Adjust Brakes and EZ Lube Hubs
- Steel Fender Guards
- Swing Away Grab Handle
- Venture Bottle Opener/Dog Tie Out

Interior Package (Mandatory)

- 6-Gal Gas/Electric DSI Water Heater
- 7 CU FT Double Door Refrigerator/Freezer
- 82" Ceiling Height
- Backsplash
- Designer Padded Headboard
- Euro Steel Faucet
- LED Lighting
- Porcelain Toilet
- Power Exhaust Fan in Bathroom
- Quilted Comforter
- Sky Light in Living Area
- Stainless Steel Accented Appliances
- StorMore Bedside Nightstands
- Undermount Stainless Steel Single Bowl Farmer Sink
- Vented Range Hood

Standard

- LED TV w/Swing Arm
- Microwave
- Murphy Bed w/Sofa & Upgraded Mattress

- Upgraded Mattress

Highway Package

- Black Tank Flush
- LP Bottle Cover
- Spare Tire

Discover Package

- Aluminum Rims w/Black Accents
- Entry Door w/Clearview Window
- Furrion Oven & 3-Burner Cooktop w/Flushmount Glass Cover
- HDMI Stereo DVD w/5.1 USB Port
- King Wi-Fi Prep
- LED Lighted Power Awning
- Power Tongue Jack
- Sink Cover/Dish Drying Rack

Sonic Xtreme Solar Package

- (1) 250AMP Lithium Ion Battery
- (4) 100 Watt Roof Mounted Solar Panels
- 100 Amp Charger
- Low Pro 11,000 BTU Low Consumption A/C
- IC2000 Watt Inverter

Sonic Xtreme Water Filtration System

- (2) Micron Filters
- City By-Pass Valve
- Infinity Water System Oxygen/Ozoneator (no dirty water)

- Shurflo 12V 4008 Pump

Sonic Xtreme OFF-ROAD Package

- (2) 3,500# Torsion Axles
- (2) High Definition LED Light Bars
- (4) Independent Powered Std. Jacks
- 15" OFF-Road Tires & Spare
- Brush Guard Perimeter Nerf Guards
- Rock-Buster Rock Skid Plate

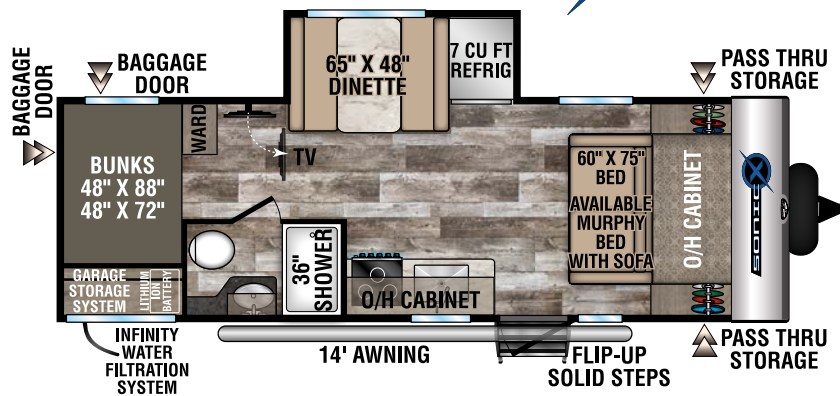
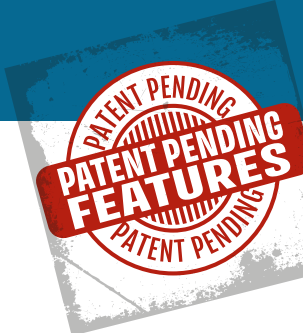
Sonic Xtreme Toy Storage

- Front Mounted Bike Rack
- Garage Storage Organizers/Accessories
- Hidden Fishing Pole/Gun Rack
- Personal Hidden Safe (220VRBX)
- SafeTek® Box w/110v and USB Charging
- Triple Tube Bumper w/ Integrated Bike/Kayak Rack

Luxury Package

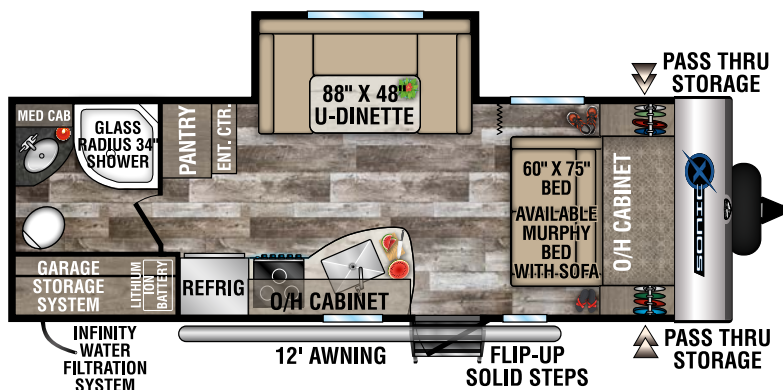
- Frameless Windows
- Pedestal Dinette Table
- Solid Surface Countertops
- Upgrade Euro Furniture

2020 SONIC X



SN211VDBX

NEW



SN220VRBX

NEW

TRAVEL TRAILERS	SN211VDBX	SN220VRBX
UVW (Unloaded Vehicle Weight)*	5,470	5,630
Dry Hitch Weight*	660	570
Dry Axle Weight*	4,810	5,060
NCC (Net Carrying Capacity)	1,860	1,655
Interior Height	82"	82"
Exterior Height with A/C	10' 4"	10' 4"
Exterior Width	90"	90"
Exterior Length	26' 11"	26' 11"
Refrigerator (Cubic Feet)	7	7
Water Heater Capacity (Gal. G/E w/DSI)	6	6
Fresh Water Capacity (Gallon)	78	78
Black Water Capacity (Gallon)	30	30
Gray Water Capacity (Gallon)	30	30
LP Gas Capacity (Lbs.)	40	40
Furnace BTUs (1,000s)	20	20
Tire Size	15"	15"
Awning	14'	12'

*This weight reflects the rolling average unit weight for each model. Your trailer weight will vary according to optional equipment.



985 N 900 W | Shipshewana, IN 46565 | www.venture-rv.com

Due to continual research and advances, manufacturer reserves the right to change specifications, design, price and equipment without notice, and assumes no responsibility for any error in this literature. Some items shown are not included as standard or optional equipment.

©2019 Venture | 12/4/19 | 10M