



SPORTTREK

Lightweight Travel Trailers



Designed for campers, by campers.

SPORTTREK

SportTrek represents user-inspired design. Purposeful residential kitchen with continuous countertops, stainless steel under-mount sink with pull-down sprayer faucet, and recessed gas cooktop with glass cover, for added counter space.

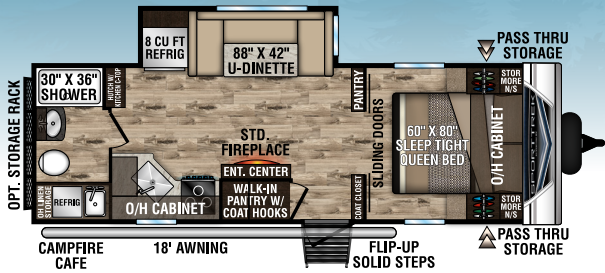
All SportTreds offer tons of storage opportunities, and drawers offer full-extension ball bearing drawer glides. The cooking area features a three-burner cooktop with flush glass cover, and built-in oven with vented range hood, as well as a microwave with turntable. The sink cover drains food and dishes, and rolls out of the way for sink use.

The 60" x 80" queen bed with padded headboard features overhead storage, easy-reach light switches, full-length side closets and StorMore nightstands with USB and 110V ports and space for CPAP breathing machines.

The optional king-sized King-U dinette provides plenty of extra elbow room, and includes expanded seating space and table surface. The entire sofa converts into extra sleeping accommodations. (varies by floorplan)

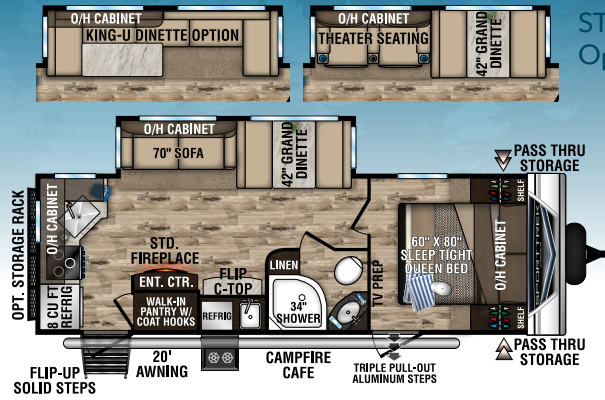


Floorplans



ST241VMS | 5,820 UVW | 28' 7" LENGTH | SLEEPS 4

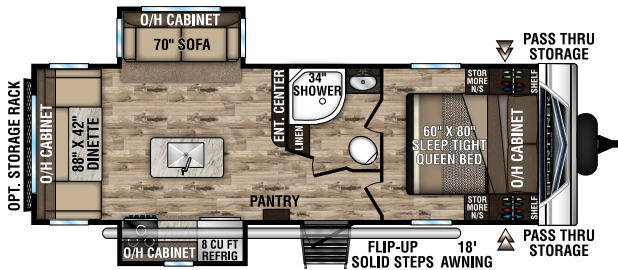
NEW



ST251VRK | 6,070 UVW | 28' 7" LENGTH | SLEEPS 6



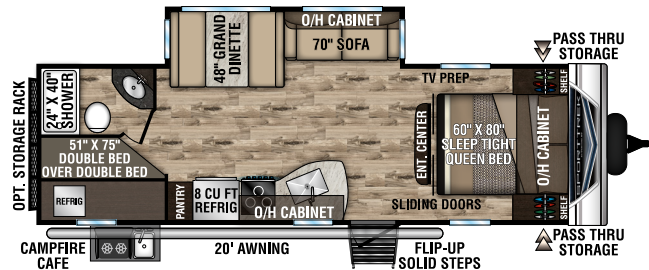
ST252VRD
Options



ST252VRD | 6,230 UVW | 29' 5" LENGTH | SLEEPS 6



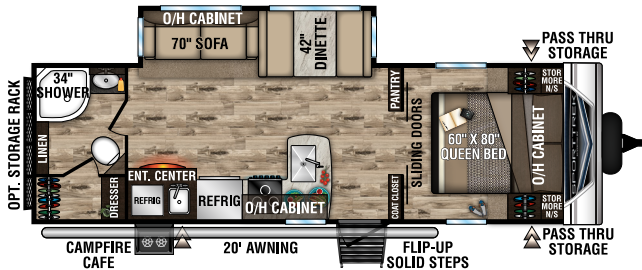
ST270VBH
Options



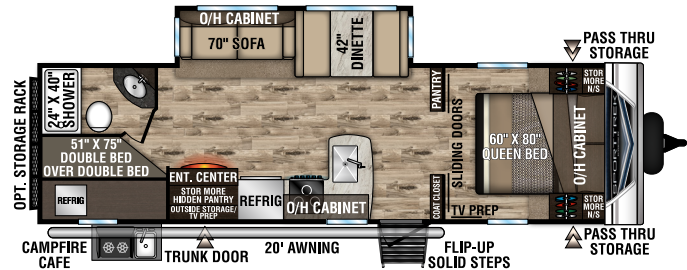
ST270VBH | 6,070 UVW | 30' 8" LENGTH | SLEEPS 10



ST271VMB
Options



ST271VMB | 6,450 UVW | 30' 11" LENGTH | SLEEPS 6

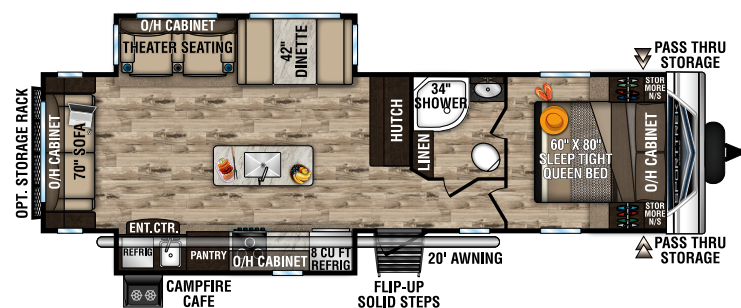


ST281VBH | 6,550 UVW | 32' 5" LENGTH | SLEEPS 10

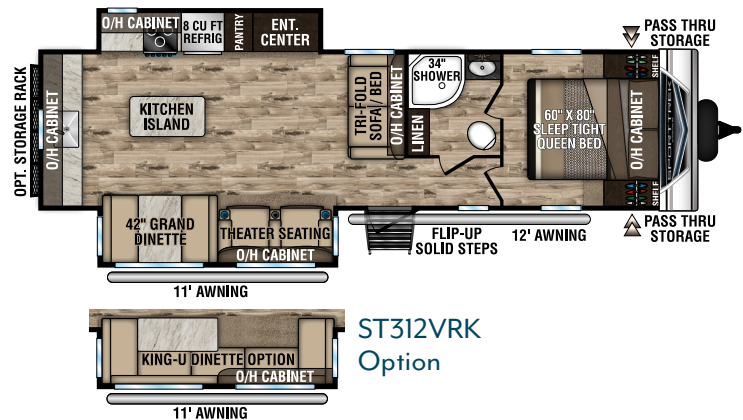
NEW



ST312VIK
Option



ST312VIK | 7,470 UVW | 34' 11" LENGTH | SLEEPS 6

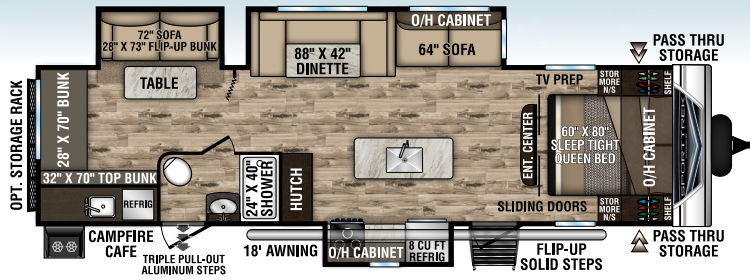


ST312VRK | 7,500 UVW | 35' 1" LENGTH | SLEEPS 6

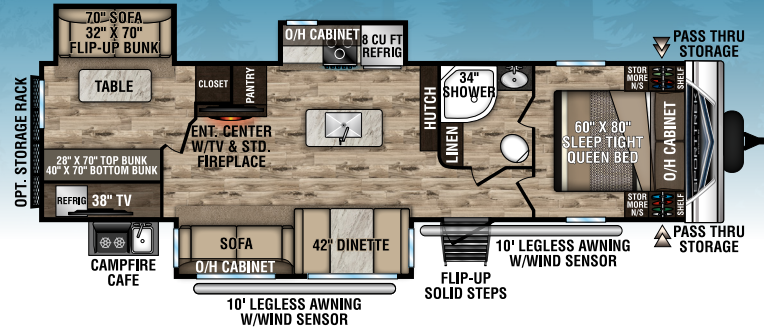
Floorplans



ST320VIK
Options



ST320VIK | 7,850 UVW | 35' 11" LENGTH | SLEEPS 11

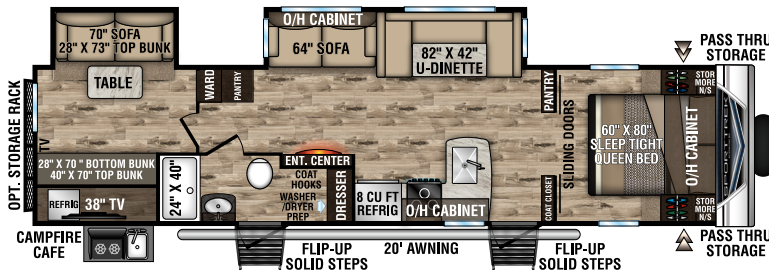


ST327VIK
Options

ST327VIK | 8,270 UVW | 36' 4" LENGTH | SLEEPS 11

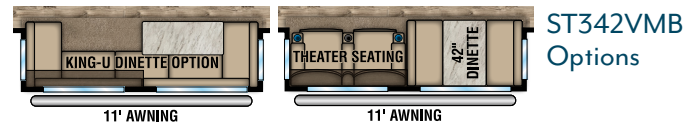
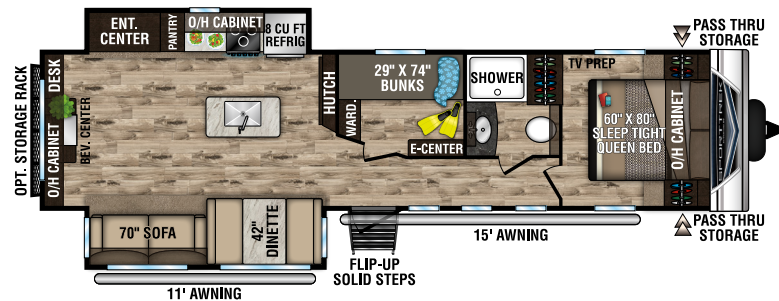


ST332VBH
Option



ST332VBH | 8,120 UVW | 37' 11" LENGTH | SLEEPS 11

NEW



ST342VMB
Options

ST342VMB | 7,970 UVW | 37' 11" LENGTH | SLEEPS 8



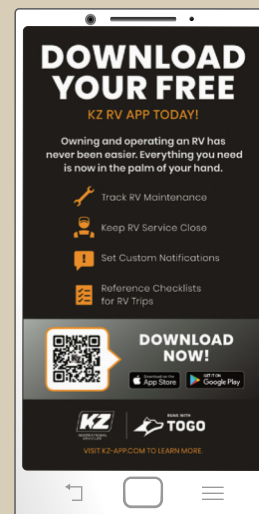
SPORTTREK
CONSTRUCTION



SportTrek's Weather Shield features a radiant foil barrier, forced heat, enclosed underbelly, enclosed gate valves and reflective PVC roof membrane with limited 15-year warranty.



LevelMate PRO lets you level your unit on the first try! This option calculates and displays the height required to achieve a perfectly level position. An arrow is displayed to indicate where the height needs to be added, further simplifying what has traditionally been time consuming guesswork. Simply level, using the height indicated and when the red level indicator turns green, you're done!



The KZ RV app...

- ✓ Helps with trip planning
- ✓ Provides handy checklists, so you don't forget anything
- ✓ Keeps track of maintenance and service
- ✓ Sends smart notifications
- ✓ Includes digital owner's manuals
- ✓ Features brand-specific news and updates

Interior Features



Flush-mounted 3-burner stovetop with glass cover, oven and back light.



Surfix countertops are stain and scratch resistant.



Sink cover drains food and dishes, and rolls out of the way for sink use.



Double-door, 8-cubic-foot, gas/electric refrigerator/freezer provides generous room for all your goodies.



An oversized, deep heavy-duty pot and pan drawer holds all sorts of sizable kitchen items.



Tons of storage throughout, including a spacious pantry in most floorplans.



SafeTek box includes concealed charging station with USB ports, and helps remove clutter from countertops.



Grand entryway into the bedroom, with two 3-panel sliding doors maximizes the space and looks amazing! (24IVMS, 27IVMS, 28IVBH, 332VBH)



The dinette converts to additional sleep space.



Dinette seats feature large removable storage bins secured by heavy-duty cabinet latches.



Optional theater seats recline individually, with heat, massage and LED light features.



Available theater seats recline individually, and include heat, massage and LED lighted cupholders.

Exterior Features



Available flip-up storage rack for cargo or two bicycles; folds flat when not in use.



Exterior bottle opener doubles as a sturdy doggie tie out.



Convenient exterior shower with hot and cold water.



Magnetic slam-latch baggage doors with spacious pass-through storage.



Campfire Cafés bring the conveniences of inside cooking to the outside, and can feature a refrigerator, cooktop, sink TV sound system and storage. (327VIK, 332VBH)



This Campfire Café features a refrigerator, 2-burner cooktop, and sink with hot and cold water and hose attachment. (24IVMS, 25IVRK, 27IVMB, 312VIK)



This Campfire Café boasts a 2-burner cooktop and sink with hot/cold water, plus a hose attachment. (270VBH, 28IVBH)

Standards & Options

Living Room/Kitchen

- Built-In Radius Entertainment Center w/Shoe Cubby (VBF)
- Comfort by Design® Grand Dinette
- Flush-Mount Interior Speakers
- High Efficiency LED Lighting
- High-Rise Satin Nickel Faucet w/Sprayer
- Jiffy w/Fold Down Center Console
- Mortise & Tenon Hardwood Cabinet Doors
- Panoramic Opening Slideout Windows
- Deco Backsplash
- Tilt-Out Utility Tray

Appliances

- 3-Burner Flush-mount Stovetop w/Oven, Glass Top & Back Light
- 8 CU FT Refrigerator
- Coleman® Whisper A/C
- Microwave w/Turntable
- Vented Range Hood w/Light

Bath

- Designer Shower Curtain w/Liner (VBF)
- Foot-Flush Porcelain Toilet
- Mirrored Medicine Cabinet
- Multi-Shelf Shower or Tub

Bedroom

- (2) Gas Struts for Large Under-Bed Storage
- 3-Panel Sliding Privacy Doors (VBF)
- 60" x 80" Sleep Tight® Mattress
- Full Length Closets
- Hard Valances
- Solid Privacy Door(s) (VBF)
- StorMore Nightstands (CPAP sized) w/110 & USB Port
- Teddy Bear® Bunk Mattress(s) (VBF)
- TV & Satellite Connections

Exterior/Construction Features

- (2) Marine-Grade Exterior Speakers
- 15" Nitrogen-Filled Radial Tires
- Cable/Satellite Connection (2 locations)
- Carbon Fiber Look Rock Guard

- Deep Slides w/Carbon Fiber Look Slideout Ends
- EZ Access® LP Tank Cover
- Flip-Up Solid Step (main door)
- Gutter w/Downspouts
- Gutters above Slideouts
- High-Polished Aluminum Rims w/Black Accents
- Hitch Light
- Large Assist Grab Handle
- Large Pass-Thru Baggage Doors (cooler-sized)
- Omni Directional Digital Antenna Receiver
- Power Tongue Jack
- Self-Adjusting Brakes
- Tinted Safety Glass Windows
- Two-Tone White & Grey Exterior Fiberglass
- Venture Bottle Opener/Dog Tie Down
- Wide-Trek® Axles

LevelMate PRO System (Mandatory)

- Venture Exclusive Wireless RV Leveling System

Weather-Shield Package (Mandatory)

- 1-Piece, Seamless, Walk-on, Tufflex Roofing Material w/15-Year Warranty
- 360° Radiant Foil Barrier
- Enclosed Underbelly
- Enclosed Gate Valves
- Forced Heated

Trek Package (Mandatory)

- 5/8" Tongue & Groove Plywood Floor Decking
- (2) 20 LB Easy Exchange LP Tanks
- (2) Legless Awnings w/Wind Sensors (327VIK)
- (2) USB Charging Ports (bedroom)
- (4) Ground Effect Blue LED Lights

- (4) Secure Stance Angled Stabilizer Jacks
- 6-Gallon Gas/Electric DSI Water Heater
- 72" Slideout Height
- 82" Interior Ceiling
- Adjustable Pantry Shelves (most models)
- Battery Disconnect
- Designer Padded Headboard
- EZ Lube Hubs
- Friction Hinge Entry Door
- Full Length Closets w/StorMore Nightstands
- Full-Extension Ball Bearing Drawer Guides
- Hardwood Cabinet Doors & Drawer Faces
- Hot & Cold Exterior Shower
- Interior Entry Door Motion Light
- Keyed Alike Key System
- Magnetic Baggage Door Catches
- Marine Grade Detachable Power Cord w/Light
- Microwave w/Turntable
- Mountain Walnut Interior Wood
- NXG Huck Bolt Frame
- Overhead Storage in Slideouts and Tabletops
- Pass-Thru Storage Motion Light
- Pleated Nightshades
- Porcelain Foot Flush Toilet
- Pots & Pans Drawer
- Power Awning w/LED Lights
- Prewired for Furrion Solar & Observation Camera
- Quilted Comforter
- Radius Glass Shower Enclosure (VBF)
- Residential Carpet
- Safe-Tek Hidden Storage w/Charging Center
- Seamless Surf(X) Countertops, Sink Covers
- Shoe Cubby (VBF)
- Skylight w/Shade
- Stainless Steel Single Bowl Undermount Sink
- Tufted Dinette Cushions
- Wood Linoleum Flooring w/5-Year Warranty

1.2 Expedition Package (Optional)

- 40" TV w/Swing Arm
- Cargo Tray

- Designer Shower Curtain w/Liner
- HDMI /DVD Stereo w/5.1 USB Charger
- High-Polished Aluminum Rims w/Black Accents
- King WIFI Prep
- Entry Door w/Clearview Window
- Large Single Bowl Stainless Steel Undermount Sink w/Dish Drying Racks
- Lighted Power Tongue Jack
- Slam Latch Baggage Doors w/Magnetic Catches
- Venture LevelMate PRO System

Trail Package (Optional)

- Black Tank Flush
- Ladder
- Spare Tire/Hoist

Entertainment Package (Required)

- 40" HD LED TV w/ Swing-Away Bracket

Options

- 3/4 Front Cap
- 2nd A/C (50 AMP w/prep required)
- (4) Independent Power Stabilizer Jacks
- 50 AMP Service w/2nd A/C Prep
- 15,000 BTU A/C
- Aluminum Rims
- Flip-Up Cargo Tray (prep standard)
- Frameless Fireplace (standard 241VMS, 251VRK, 271VMB, 327VIK)
- Furrion Observation/Backup Camera
- King "U" Sofa (N/A 241VMS, 252VRD)
- Lighted Power Tongue Jack
- Swing Away Bumper Mount Griddle
- Table/Chairs IPO Booth (N/A 241VMS)
- Theater Seats (standard 312VRK & 312VIK)
- Tri-Fold Sofa (standard 312VRK, N/A 241VMS)
- Upgraded Mattress

TRAVEL TRAILERS	ST241VMS	ST251VRK	ST252VRD	ST270VBH	ST271VMB	ST281VBH	ST312VIK	ST312VRK	ST320VIK	ST327VIK	ST332VBH	ST342VMB
UVW (Unloaded Vehicle Weight)*	5,820	6,070	6,230	6,070	6,450	6,550	7,470	7,500	7,850	8,270	8,120	7,970
Dry Hitch Weight*	700	660	790	780	720	710	840	830	960	890	890	870
Dry Axle Weight*	5,120	5,410	5,440	5,290	5,730	5,840	6,630	6,670	6,890	7,380	7,230	7,100
NCC (Net Carrying Capacity)	1,530	1,260	1,165	1,320	2,710	2,605	1,750	1,715	1,430	2,575	2,725	2,865
Interior Height	82"	82"	82"	82"	82"	82"	82"	82"	82"	82"	82"	82"
Exterior Height with A/C	11' 2"	11' 2"	11' 2"	11' 2"	11' 4"	11' 4"	11' 4"	11' 4"	11' 4"	11' 6"	11' 6"	11' 6"
Exterior Width	96"	96"	96"	96"	96"	96"	96"	96"	96"	96"	96"	96"
Exterior Length	28' 7"	28' 7"	29' 5"	30' 8"	30' 11"	32' 5"	34' 11"	35' 1"	35' 11"	36' 4"	37' 11"	37' 11"
Refrigerator (Cubic Feet)	8	8	8	8	8	8	8	8	8	8	8	8
Water Heater Cap. (Gal. Gas w/DSI)	6	6	6	6	6	6	6	6	6	6	6	6
Fresh Water Capacity (Gallon)	51	51	51	51	51	51	51	51	51	51	51	51
Black Water Capacity (Gallon)	32	32	32	32	32	32	32	32	32	32	32	32
Gray Water Capacity (Gallon)	32	64	32	32	64	32	32	64	32	32	64	64
LP Gas Capacity (Lbs.)	40	40	40	40	40	40	40	40	40	40	40	40
Furnace BTUs (1,000s)	30	30	30	30	30	30	30	30	30	30	30	30
Tire Size	15"	15"	15"	15"	15"	15"	15"	15"	15"	15"	15"	15"
Awning	18'	20'	18'	20'	20'	20'	20'	11'/12'	18'	10'/10'	20'	11'/15'

*This weight reflects the rolling average unit weight for each model. Your trailer weight will vary according to optional equipment.



985 N 900 W | Shipshewana, IN 46565 | www.venture-rv.com

Due to continual research and advances, manufacturer reserves the right to change specifications, design, price and equipment without notice, and assumes no responsibility for any error in this literature. Some items shown are not included as standard or optional equipment.

©2019 Venture | 1/21/20 | 30M

