



STRATUS

ULTRA-Lite Travel Trailers



Designed for campers, by campers.

STRATUS

Stratus has it all... an eye-catching exterior, stunning decor and a long list of exciting standard features. Not to mention there's tons and tons of storage, including loads of clever concealed spaces to stash more stuff. This affordable ultra-lite travel trailer has got the goods, with a fresh, modern vibe.

Kitchens feature a cool LED-lit backsplash, with a window to welcome in natural light. The gas range with glass cover adds valuable counter space, and the microwave and oven offer the same conveniences as home.



The U-shaped dinette provides roomy eating space by day, with large scenic-view windows. By night, it quickly converts to a comfortable sleep space.



The 60 x 80-inch true residential queen bed offers storage beside, above and below. USB ports, 110V outlet and light switches are all within reach, as is CPAP nightstand storage. Tall shirt cabinets on both sides allow for clothes on hangers. The bed lifts to reveal spacious storage, and overhead cabinet accent lighting completes the scene.

Kids love having their own special area, and bunkhouse floorplans are fun, functional and comfortable, with a study fixed ladder and lookout windows on both levels. Ample open-shelf storage gives easy access to toys and games, and the under-bed space accommodates backpacks and plenty of other large items.



The optional theater seats recline individually, and offer heat/massage features and LED accent lighting at the cupholder.



Contrasting light and dark woodwork gives a nod to today's mixed cabinetry aesthetic, with Alpine White nicely offsetting the dark Mountain Walnut. The LED TV and multi-media stereo, DVD and wireless connectivity are perfect for indoor camping, and the optional 30-inch fireplace takes the edge off cool mornings and chilly nights. The discreet cubby below the fireplace stores Rover's doggie dish, or lets you keep shoes at the ready.

Interior Features



Flush-mounted 3-burner stove w/glass cover (for increased counter space), oven and illuminated controls.



Sink cover drains food and dishes, and rolls out of the way for sink use.



Extra-large pots and pans storage drawer keeps clutter at bay.



Let's face it, camping is all about eating. With the generous 8 CU FT refrigerator, you don't need to skimp on anything!



Cubby on each side of the headboard w/110V outlet.



Safe Tek Box hidden charging station and valuables storage includes 110V outlet and USB charger.



Rugged vinyl flooring with 7-year limited warranty and dinettes that boast two huge 36-inch removable storage bins, which can be taken into the house and packed with food, gear, and clothes, and then slid back out of sight.

Exterior Features



Stratus comes with a Lamilux premium high-gloss gelcoat surface that's easy to clean and won't rust, rot, corrode or peel. The power awning includes LED lights. Wheels are high-polished, black-accented aluminum, and radial tires are filled with nitrogen. Secure stabilizer jacks are mounted at 45 degrees, for added stability. Pass-through storage compartment with heavy-duty slam-latch doors include motion light and magnetic door catches. Power tongue is lighted for added convenience.



Screen Shot screen door and solid flip-up step keep the bugs out and add secure footing.



Outside shower with hot and cold faucets keep everyone sand and dirt free!



Several Stratus floorplans offer the Campfire Café; an outside cooking station that brings the conveniences of indoor cooking outdoors.



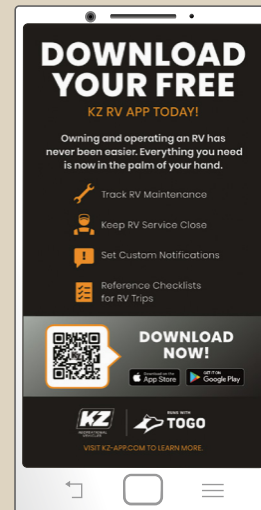
STRATUS
CONSTRUCTION



Stratus' Weather Shield features a radiant foil barrier, forced heat, enclosed underbelly, enclosed gate valves and reflective PVC roof membrane with limited 15-year warranty.



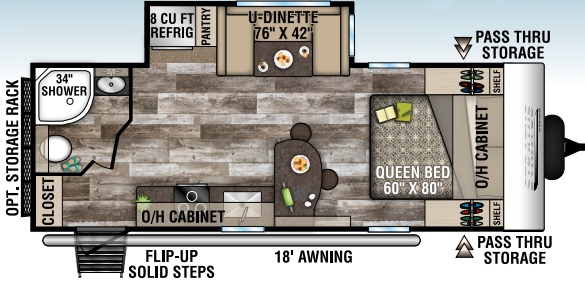
LevelMate PRO lets you level your unit on the first try! This option calculates and displays the height required to achieve a perfectly level position. An arrow is displayed to indicate where the height needs to be added, further simplifying what has traditionally been time consuming guesswork. Simply level, using the height indicated and when the red level indicator turns green, you're done!



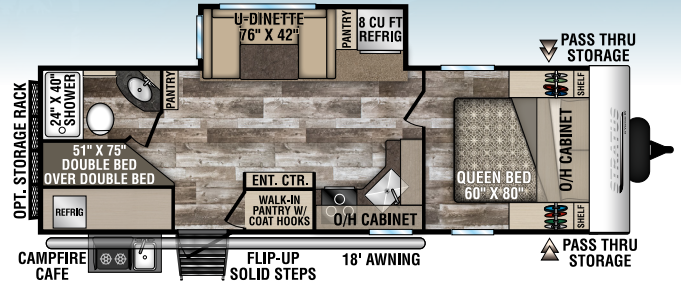
The KZ RV app...

- ✓ Helps with trip planning
- ✓ Provides handy checklists, so you don't forget anything
- ✓ Keeps track of maintenance and service
- ✓ Sends smart notifications
- ✓ Includes digital owner's manuals
- ✓ Features brand-specific news and updates

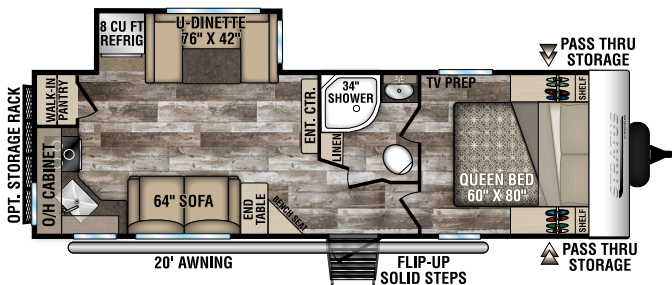
Floorplans



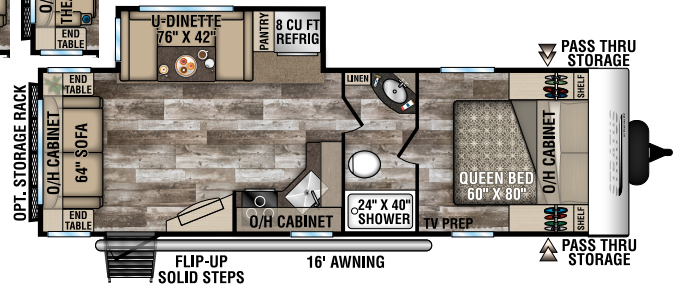
SR231VRB | 5,220 UVW | 26' 9" LENGTH | SLEEPS 4



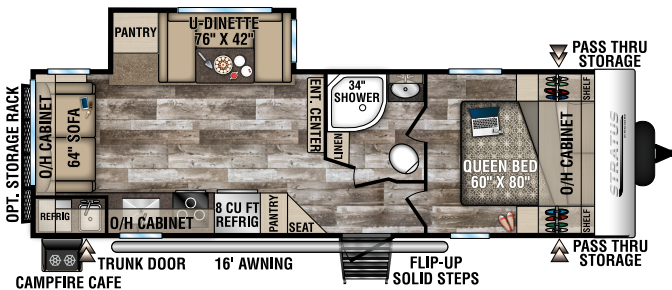
SR261VBH | 5,970 UVW | 30' 3" LENGTH | SLEEPS 8



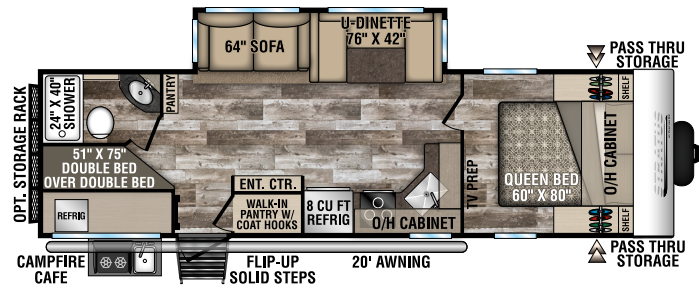
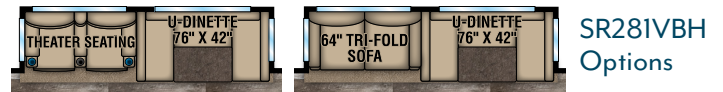
SR261VRK | 5,860 UVW | 30' 3" LENGTH | SLEEPS 6



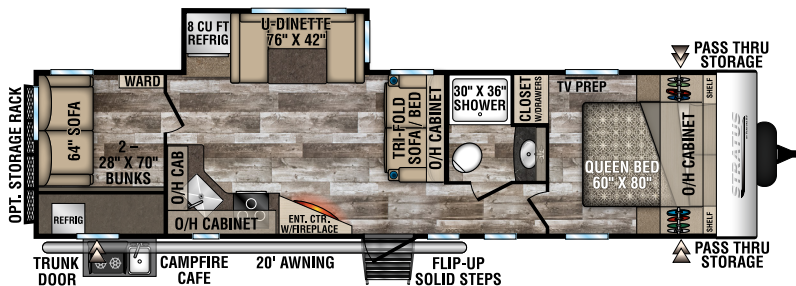
SR261VRL | 5,840 UVW | 30' 3" LENGTH | SLEEPS 6



SR271VRS | 6,020 UVW | 30' 7" LENGTH | SLEEPS 6



SR281VBH | 6,420 UVW | 32' 1" LENGTH | SLEEPS 8



SR321VQB | 6,980 UVW | 35' 11" LENGTH | SLEEPS 10



Standards & Options

Living Room/Kitchen

- Built-In Entertainment Center w/Shoe Cubby (VBF)
- Comfort by Design® Grand Dinette
- Comfort by Design® Sofa (VBF)
- Flush-Mount Interior Speakers
- High Efficiency LED Lighting
- High-Rise Satin Nickel Faucet w/Sprayer
- Jiffy w/Fold Down Center Console (VBF)
- Panoramic Opening Slideout Windows
- Tilt-Out Utility Tray

Appliances

- 3-Burner Flush Mount Stovetop w/Oven, Glass Top & Backlit Back Splash
- 8 CU FT Refrigerator
- Coleman® Whisper A/C
- Microwave
- Vented Range Hood w/Light

Bath

- Designer Shower Curtain w/Liner (VBF)
- Foot-Flush Porcelain Toilet
- Mirrored Medicine Cabinet
- Multi-Shelf Shower or Tub

Bedroom

- (2) Gas Struts for Large Under-Bed Storage
- 60" x 80" Sleep Tight® Mattress
- Full Length Closets w/Easy Access Nightstands w/USB Port (110 outlet)
- Hard Valances
- Nightshades
- Solid Privacy Door(s) (most models)
- Solid Wood Nightstands
- StorMore Nightstands (CPAP sized)
- Teddy Bear® Bunk Mattress(s)
- TV & Satellite Connections

Exterior/Construction Features

- (2) Marine-Grade Exterior Speakers
- 15" Nitrogen-Filled Radial Tires
- Available in (4) Exterior Colors (Grey, Red, White, Blue) High-Gloss Fiberglass
- Black Tank Flush
- Cable/Satellite Connection (2 locations)
- Carbon Fiber Look Rock Guard
- Deep Slides w/Carbon Fiber Look Slideout Ends
- Extra-Long Awnings
- EZ Access® LP Tank Cover
- Flip-Up Cargo Tray
- Flip-Up Solid Step (main door)
- Gutters above Slideouts
- Gutter w/Downspouts
- High-Polished Aluminum Rims w/Black Accents
- Hitch Light
- Ladder
- Large Assist Grab Handle
- Large Pass-Thru Slam Latch Baggage Doors (cooler-sized)
- Lighted Power Tongue Jack
- Omni Directional Digital Antenna Receiver
- Power Awning w/ LED Lights
- Self-Adjusting Brakes
- Spare Tire & Hoist
- Tinted Safety Glass Windows
- Venture Bottle Opener/Dog Tie Down
- Wide-Trek® Axles

LevelMate PRO (Mandatory)

- Venture Exclusive Wireless RV Leveling System

Weather-Shield Package (Mandatory)

- 1-Piece, Seamless, Walk-on, Tufflex Roofing Material w/15-Year Warranty

- Enclosed Gate Valves
- Enclosed Underbelly
- Forced Heat
- Radiant Foil Barrier

Exterior Package (Mandatory)

- 5/8" Tongue & Groove Plywood Floor Decking
- (2) 20 LB Easy Exchange LP Tanks
- (4) Ground Effect Blue LED Lights
- (4) Secure Stance Angled Stabilizer Jacks
- 6-Gallon Gas/Electric DSI Water Heater
- Battery Disconnect
- EZ Lube Hubs
- Friction Hinge Entry Door
- Hot & Cold Exterior Shower
- Interior Entry Door Motion Light
- Keyed Alike Key System
- NXG Huck Bolt Frame
- Magnetic Baggage Door Catches
- Marine Grade Detachable Power Cord w/Light
- Prewired for Furion Solar & Observation Camera

Interior Package (Mandatory)

- (2) USB Charging Ports in Bedroom
- Adjustable Pantry Shelves (most models)
- Alpine White & Mountain Walnut Interior Wood
- Designer Padded Headboard
- Frameless Fireplace
- Full-Extension Ball Bearing Drawer Guides
- Full-Length Closets w/StorMore Nightstands
- Microwave
- Pleated Nightshades
- Porcelain Toilet
- Pots & Pans Drawer

- Quilted Comforter
- Radius Glass Shower Enclosure (VBF)
- Residential Carpet
- Safe-Tek Hidden Storage w/Charging Center
- Seamless Surf-X Countertops & Tabletops
- Shoe Cubby (varies by floorplan)
- Skylight w/Shade
- Stainless Steel Single Bowl Undermount Sink
- Tufted Dinette Cushions
- Upgraded Mattress
- Wood-Look Linoleum Flooring
- w/7-Year Limited Warranty

Options

- 2nd A/C (50A w/Prep Req'd)
- (4) Independent Power Stabilizer Jacks
- 50 AMP Service w/2nd A/C Prep
- 15,000 BTU A/C
- Furion Observation/Backup Camera
- Swing Away Bumper Mount Griddle
- Table/Chairs IPO Booth (N/A 231VRB)
- Theater Seats
- Tri-Fold Sofa

Entertainment Package (Optional)

- 40" HD LED TV w/ Swing-Arm Bracket

1.2 Cloud 9 Package (Optional)

- 40" TV w/Swing Arm
- Designer Shower Curtain w/Liner
- HDMI / DVD Stereo w/5.1 USB Charger
- King WIFI Prep Entry Door w/Clearview Window
- Large Single Bowl Stainless Steel Undermount Sink w/Dish Drying Racks
- Venture LevelMate PRO System

TRAVEL TRAILERS	SR231VRB	SR261VBH	SR261VRK	SR261VRL	SR271VRS	SR281VBH	SR321VQB
UVW (Unloaded Vehicle Weight)*	5,220	5,970	5,860	5,840	6,020	6,420	6,980
Dry Hitch Weight*	570	770	610	640	700	680	850
Dry Axle Weight*	4,650	5,200	5,250	5,200	5,320	5,740	6,130
NCC (Net Carrying Capacity)	2,065	1,415	1,445	1,480	1,330	1,880	2,245
Interior Height	78"	78"	78"	78"	78"	78"	78"
Exterior Height with A/C	10' 10"	10' 10"	10' 10"	10' 10"	10' 10"	10' 10"	10' 10"
Exterior Width	96"	96"	96"	96"	96"	96"	96"
Exterior Length	26' 9"	30' 3"	30' 3"	30' 3"	30' 7"	32' 1"	35' 11"
Refrigerator (Cubic Feet)	8	8	8	8	8	8	8
Water Heater Cap. (Gal. Gas w/DSI)	6	6	6	6	6	6	6
Fresh Water Capacity (Gallon)	51	51	51	51	51	51	51
Black Water Capacity (Gallon)	32	32	32	32	32	32	32
Gray Water Capacity (Gallon)	32	64	64	64	64	64	64
LP Gas Capacity (Lbs.)	(2) 20# Bottles	(2) 20# Bottles	(2) 20# Bottles	(2) 20# Bottles	(2) 20# Bottles	(2) 20# Bottles	(2) 20# Bottles
Furnace BTUs (1,000s)	30	30	30	30	30	30	30
Tire Size	15"	15"	15"	15"	15"	15"	15"
Awning	18'	18'	20'	16'	16'	20'	20'

*This weight reflects the rolling average unit weight for each model. Your trailer weight will vary according to optional equipment.



985 N 900 W | Shipshewana, IN 46565 | www.venture-rv.com

Due to continual research and advances, manufacturer reserves the right to change specifications, design, price and equipment without notice, and assumes no responsibility for any error in this literature. Some items shown are not included as standard or optional equipment.

©2019 Venture | 1/20/20 | 30M

