



# STRATUS

## ULTRA-Lite Travel Trailers



### Living Room/Kitchen

- Built-In Entertainment Center w/Shoe Cubby (VBF)
- Comfort by Design® Grand Dinette
- Comfort by Design® Sofa (VBF)
- Flush-Mount Interior Speakers
- High Efficiency LED Lighting
- High-Rise Satin Nickel Faucet w/Sprayer
- Jiffy w/Fold Down Center Console (VBF)
- Panoramic Opening Slideout Windows
- Tilt-Out Utility Tray

### Appliances

- 3-Burner Flush Mount Stovetop w/Oven, Glass Top & Backlit Back Splash
- 8 CU FT Refrigerator
- Coleman® Whisper A/C
- Microwave
- Vented Range Hood w/Light

### Bath

- Designer Shower Curtain w/Liner (VBF)
- Foot-Flush Porcelain Toilet
- Mirrored Medicine Cabinet
- Multi-Shelf Shower or Tub

### Bedroom

- (2) Gas Struts for Large Under-Bed Storage
- 60" x 80" Sleep Tight® Mattress
- Full Length Closets w/Easy Access Nightstands w/USB Port (110 outlet)
- Hard Valances
- Nightshades
- Solid Privacy Door(s) (most models)
- Solid Wood Nightstands
- StorMore Nightstands (CPAP sized)
- Teddy Bear® Bunk Mattress(s)
- TV & Satellite Connections

### Exterior/Construction Features

- (2) Marine-Grade Exterior Speakers
- 15" Nitrogen-Filled Radial Tires
- Available in (4) Exterior Colors (Grey, Red, White, Blue) High-Gloss Fiberglass
- Black Tank Flush
- Cable/Satellite Connection (2 locations)
- Carbon Fiber Look Rock Guard
- Deep Slides w/Carbon Fiber Look Slideout Ends
- Extra-Long Awnings
- EZ Access® LP Tank Cover
- Flip-Up Cargo Tray
- Flip-Up Solid Step (main door)
- Gutters above Slideouts
- Gutter w/Downspouts
- High-Polished Aluminum Rims w/Black Accents
- Hitch Light
- Ladder
- Large Assist Grab Handle
- Large Pass-Thru Slam Latch Baggage Doors (cooler-sized)
- Lighted Power Tongue Jack
- Omni Directional Digital Antenna Receiver
- Power Awning w/ LED Lights
- Self-Adjusting Brakes
- Spare Tire & Hoist
- Tinted Safety Glass Windows
- Venture Bottle Opener/Dog Tie Down
- Wide-Trek® Axles

### LevelMate PRO (Mandatory)

- Venture Exclusive Wireless RV Leveling System

### Weather-Shield Package (Mandatory)

- 1-Piece, Seamless, Walk-on, Tufflex Roofing Material w/15-Year Warranty

- Enclosed Gate Valves
- Enclosed Underbelly
- Forced Heat
- Radiant Foil Barrier

### Exterior Package (Mandatory)

- 5/8" Tongue & Groove Plywood Floor Decking
- (2) 20 LB Easy Exchange LP Tanks
- (4) Ground Effect Blue LED Lights
- (4) Secure Stance Angled Stabilizer Jacks
- 6-Gallon Gas/Electric DSI Water Heater
- Battery Disconnect
- EZ Lube Hubs
- Friction Hinge Entry Door
- Hot & Cold Exterior Shower
- Interior Entry Door Motion Light
- Keyed Alike Key System
- NXG Huck Bolt Frame
- Magnetic Baggage Door Catches
- Marine Grade Detachable Power Cord w/ Light
- Prewired for Furion Solar & Observation Camera

### Interior Package (Mandatory)

- (2) USB Charging Ports in Bedroom
- Adjustable Pantry Shelves (most models)
- Alpine White & Mountain Walnut Interior Wood
- Designer Padded Headboard
- Frameless Fireplace
- Full-Extension Ball Bearing Drawer Guides
- Full-Length Closets w/StorMore Nightstands
- Microwave
- Pleated Nightshades
- Porcelain Toilet
- Pots & Pans Drawer

- Quilted Comforter
- Radius Glass Shower Enclosure (VBF)
- Residential Carpet
- Safe-Tek Hidden Storage w/Charging Center
- Seamless Surf-X Countertops & Tabletops
- Shoe Cubby (varies by floorplan)
- Skylight w/Shade
- Stainless Steel Single Bowl Undermount Sink
- Tufted Dinette Cushions
- Upgraded Mattress
- Wood-Look Linoleum Flooring w/7-Year Limited Warranty

### Options

- 2nd A/C (50A w/Prep Req'd)
- (4) Independent Power Stabilizer Jacks
- 50 AMP Service w/2nd A/C Prep
- 15,000 BTU A/C
- Furion Observation/Backup Camera
- Swing Away Bumper Mount Griddle
- Table/Chairs IPO Booth (N/A 231VRB)
- Theater Seats
- Tri-Fold Sofa

### Entertainment Package (Optional)

- 40" HD LED TV w/ Swing-Arm Bracket

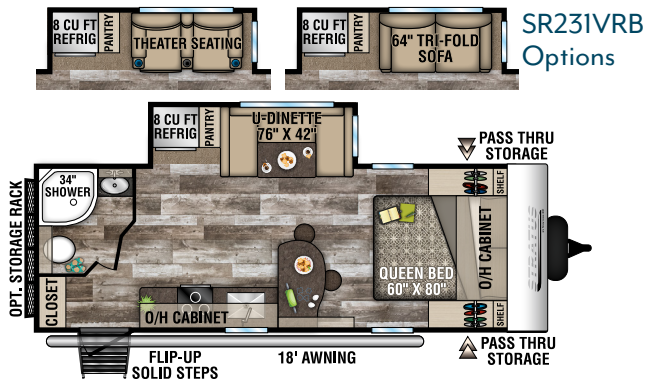
### 1.2 Cloud 9 Package (Optional)

- 40" TV w/Swing Arm
- Designer Shower Curtain w/Liner
- HDMI /DVD Stereo w/5.1 USB Charger
- King WIFI Prep Entry Door w/Clearview Window
- Large Single Bowl Stainless Steel Undermount Sink w/Dish Drying Racks
- Venture LevelMate PRO System

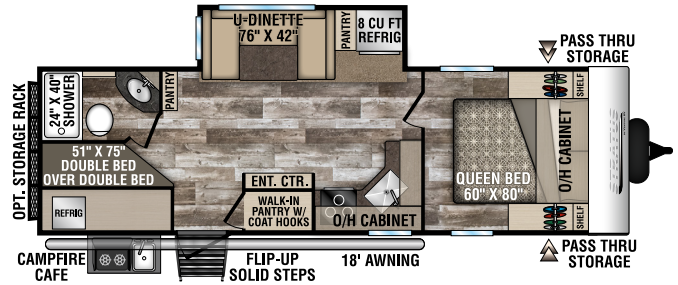
TRAVEL TRAILERS	SR231VRB	SR261VBH	SR261VRK	SR261VRL	SR271VRS	SR281VBH	SR321VQB
UVW (Unloaded Vehicle Weight)*	5,220	5,970	5,860	5,840	6,020	6,420	6,980
Dry Hitch Weight*	570	770	610	640	700	680	850
Dry Axle Weight*	4,650	5,200	5,250	5,200	5,320	5,740	6,130
NCC (Net Carrying Capacity)	2,065	1,415	1,445	1,480	1,330	1,880	2,245
Interior Height	78"	78"	78"	78"	78"	78"	78"
Exterior Height with A/C	10' 10"	10' 10"	10' 10"	10' 10"	10' 10"	10' 10"	10' 10"
Exterior Width	96"	96"	96"	96"	96"	96"	96"
Exterior Length	26' 9"	30' 3"	30' 3"	30' 3"	30' 7"	32' 1"	35' 11"
Refrigerator (Cubic Feet)	8	8	8	8	8	8	8
Water Heater Cap. (Gal. Gas w/DSI)	6	6	6	6	6	6	6
Fresh Water Capacity (Gallon)	51	51	51	51	51	51	51
Black Water Capacity (Gallon)	32	32	32	32	32	32	32
Gray Water Capacity (Gallon)	32	64	64	64	64	64	64
LP Gas Capacity (Lbs.)	(2) 20# Bottles	(2) 20# Bottles	(2) 20# Bottles	(2) 20# Bottles	(2) 20# Bottles	(2) 20# Bottles	(2) 20# Bottles
Furnace BTUs (1,000s)	30	30	30	30	30	30	30
Tire Size	15"	15"	15"	15"	15"	15"	15"
Awning	18'	18'	20'	16'	16'	20'	20'

\*This weight reflects the rolling average unit weight for each model. Your trailer weight will vary according to optional equipment.

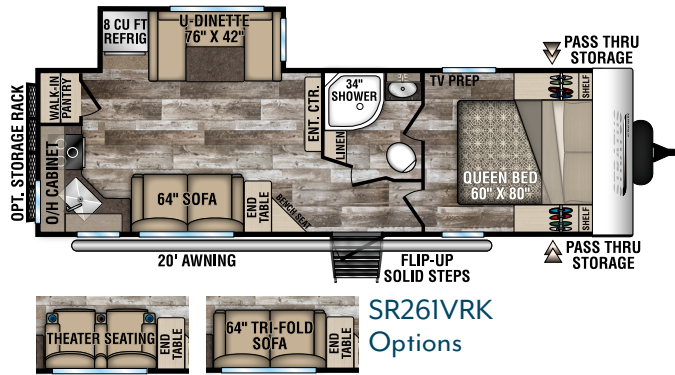
# 2020 STRATUS



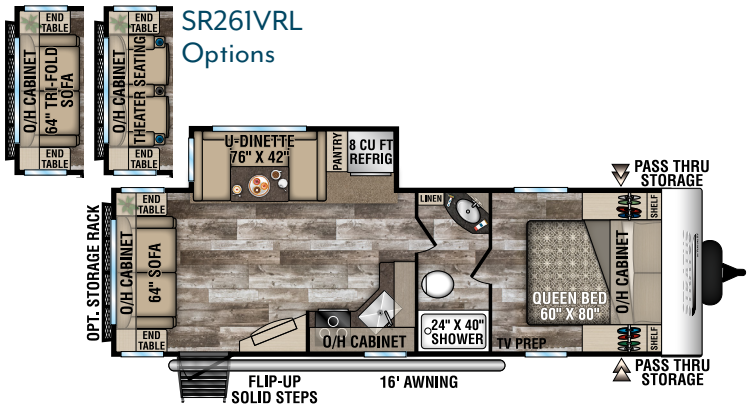
SR231VRB



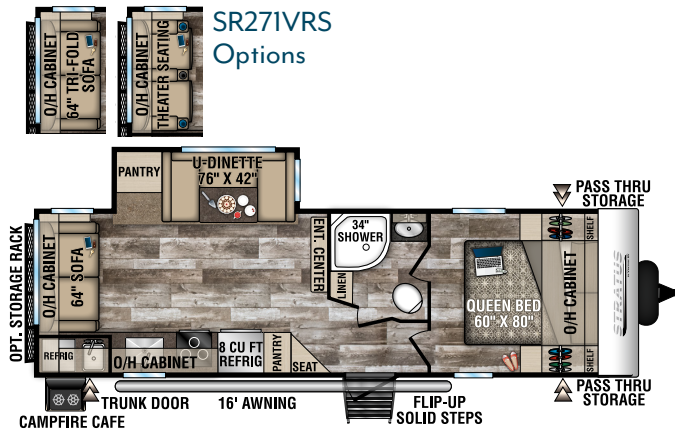
SR261VBH



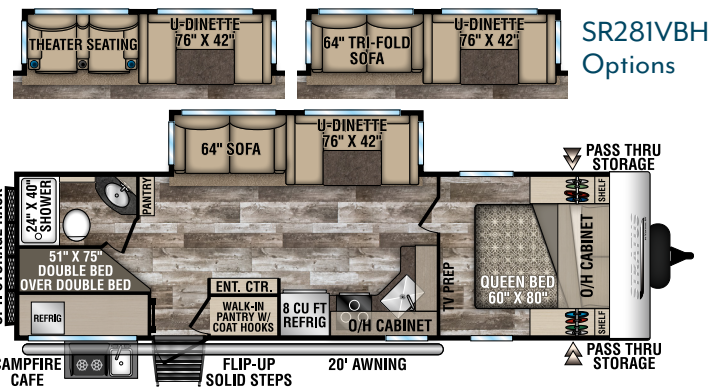
SR261VRK



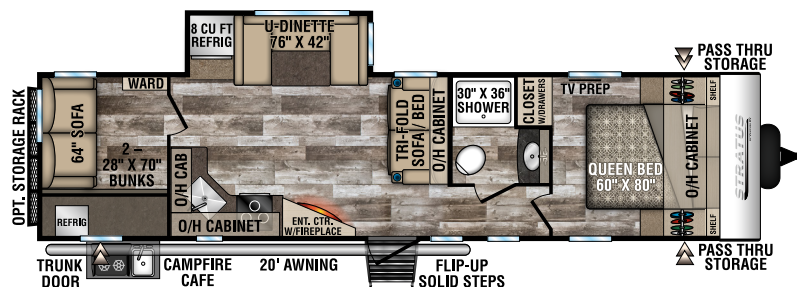
SR261VRL



SR271VRS



SR281VBH



SR321VQB



985 N 900 W | Shippshewana, IN 46565 | [www.venture-rv.com](http://www.venture-rv.com)

Due to continual research and advances, manufacturer reserves the right to change specifications, design, price and equipment without notice, and assumes no responsibility for any error in this literature. Some items shown are not included as standard or optional equipment.

©2019 Venture | 1/22/20 | 20M