



SPORTTREK

Lightweight Travel Trailers



Designed for campers, by campers.

SPORTTREK

SportTrek represents user-inspired design. Purposeful residential kitchen with continuous countertops, stainless steel under-mount sink with pull-down sprayer faucet, and recessed gas cooktop with glass cover, for added counter space.

All SportTreks offer tons of storage opportunities, and drawers offer full-extension ball bearing drawer glides. The cooking area also features a built-in oven with vented range hood, as well as a microwave with turntable. The sink cover drains food and dishes, and rolls out of the way for sink use.



Dinettes offer tufted dinette cushions and under-seat removable storage tubs.



Bedrooms include queen beds and full-length closets with StorMore CPAP-sized nightstands.



2' ACCESSORY HITCH

30" X 36" SHOWER

10 CU FT REFRIG

88" X 42" U-DINETTE

STD. FIREPLACE

EXT. CENTER PANTRY W/ COAT HOOKS

60" X 80" SLEEP THRU QUEEN BED

O/H CABINET

SLIDING DOORS

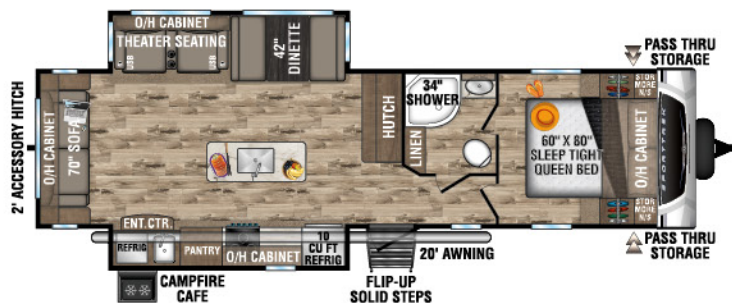
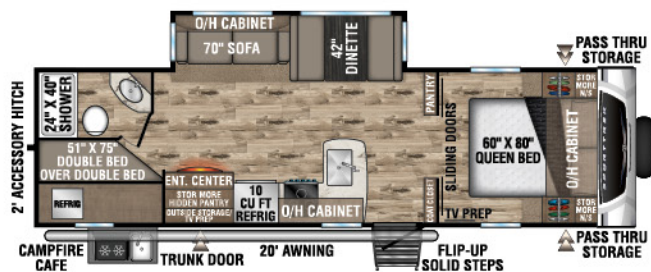
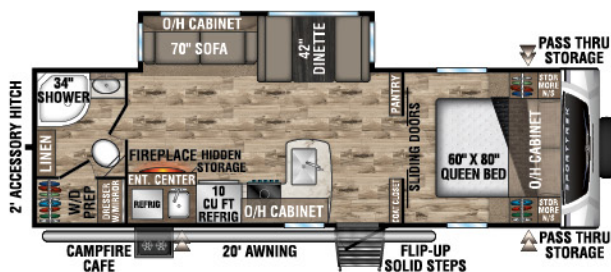
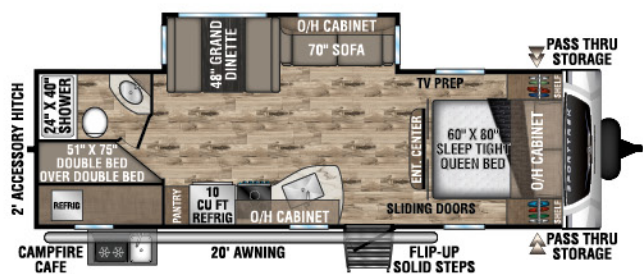
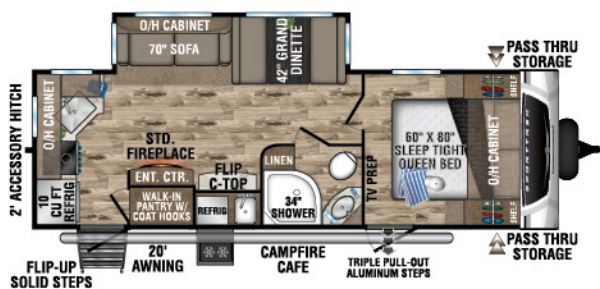
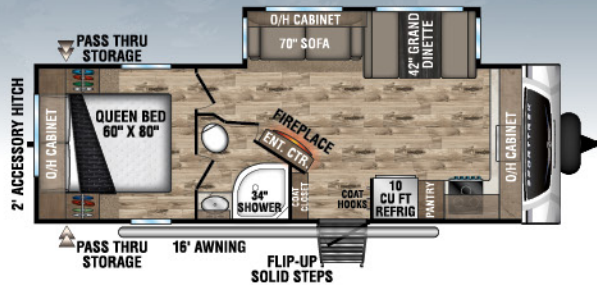
STAIRS DOWN

FLIP-UP SOLID STEPS

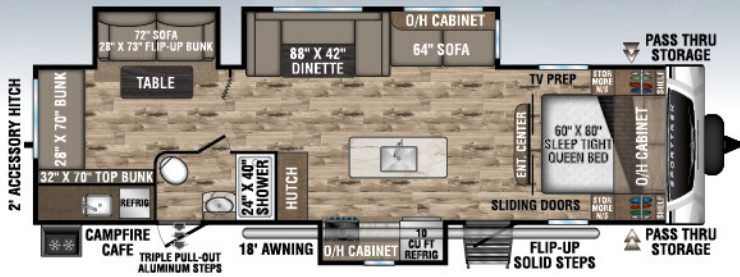
18' AWNING

CAMPFIRE CAFE

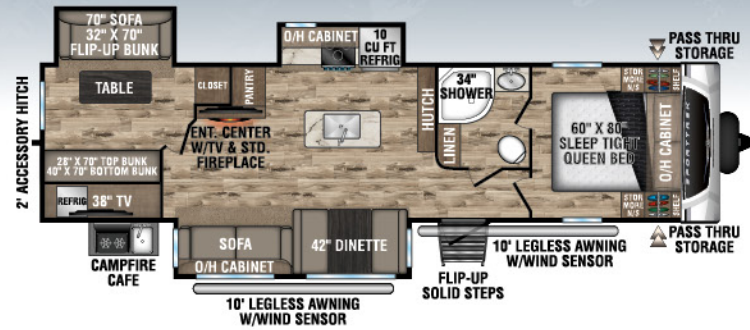
PASS THRU STORAGE



Floorplans



ST320VIK | 7,940 UVW | 35' 11" LENGTH | SLEEPS 11



ST327VIK | 8,270 UVW | 36' 4" LENGTH | SLEEPS 11



ST332VBH | 8,200 UVW | 37' 11" LENGTH | SLEEPS 11



SportTrek's Weather Shield features a radiant foil barrier, forced heat, enclosed underbelly, enclosed gate valves and reflective PVC roof membrane with limited 20-year warranty.



LevelMate PRO lets you level your unit on the first try! This option calculates and displays the height required to achieve a perfectly level position.



Interior Features



Flush-mounted 3-burner stovetop with glass cover, oven and back light.



Sink cover drains food and dishes, and rolls out of the way for sink use.



Double-door 10 CU FT refrigerator provides generous room for all your goodies.



An oversized, deep heavy-duty pot and pan drawer holds all sorts of sizable kitchen items. (varies by floorplan)



Tons of storage throughout, including a spacious pantry in most floorplans.



SafeTek box includes concealed charging station with USB ports, and helps remove clutter from countertops.



Optional theater seats recline individually, with heat and massage features.



The dinette converts to additional sleep space.



Dinette seats feature large removable storage bins secured by heavy-duty cabinet latches.



StorMore nightstands on each side of queen bed, behind full-length closets.

Exterior Features



Flip-up solid steps provide sure-footed security.



Optional rear 2-inch accessory hitch.



Convenient exterior shower with hot and cold water.



Magnetic slam-latch baggage doors with spacious pass-through storage.



Campfire Cafés bring the conveniences of inside cooking to the outside, and can feature a refrigerator, cooktop, sink TV sound system and storage. (327VIK, 332VBH)



This Campfire Café features a refrigerator, 2-burner cooktop, and sink with hot and cold water and hose attachment. (241VMS, 251VRK, 271VMB, 291VRK, 312VIK)



This Campfire Café boasts a 2-burner cooktop and sink with hot/cold water, plus a hose attachment and refrigerator. (270VBH, 281VBH)

Packages & Options

EXPEDITION PACKAGE 1.3 (OPTION)

New Modern Farmhouse design w/antique white & heirloom maple-glazed cabinet doors, barn-style passage doors, 60"x 80" Memory Foam Serta mattress, 10 CU FT double-door refrigerator, tucked bumper w/2" accessory hitch, rear backup lighting, WIFI prep, entry door w/clear-view window, HDMI/DVD Stereo w/5.1 AMP USB charger, large single-bowl under-mount stainless steel kitchen sink, dish drying sink cover, western pine board accent walls, slam latch baggage doors w/magnetic catches, 40" TV w/swing arm, Venture LevelMate PRO, high-polished aluminum rims w/black accents, power tongue jack, 5,000 BTU frameless fireplace, Venture cutting board, & Go Power roof-mounted solar prep, closeable A/C vents, Venture command board.

WEATHER-SHIELD PACKAGE (MANDATORY)

Forced air heated & enclosed underbelly, enclosed gate valves, 360 degree residential fiberglass insulation, 360 degree radiant foil insulation, radiant foil-wrapped tanks & reflective PVC roof membrane w/20-year warranty.

TREK PACKAGE (MANDATORY)

Tufted dinette cushions, 5/8" tongue & groove plywood floor decking, NXG Huck bolt frame, EZ Lube hubs, (4) angled stabilizer jacks, (2) 20 LB LP tanks w/easy access cover, walkable roof, hot & cold outside shower, 6 GAL gas/electric DSI water heater, Furrrion marine-grade detachable power cord, LED stabilizer accent lighting, motion activated interior entry & pass-thru storage lights, backup camera prep, Keyed Alike key system, battery disconnect, microwave, Safe-Tek hidden storage w/charging center, USB charging ports, 82" interior ceiling, 72" slideout height, overhead Storage in slideout, skylight w/shade, pleated nightshades, seamless Surf(x) countertops & tabletops, hardwood cabinet doors & drawer faces, full-extension ball bearing drawer guides, pots & pans drawer & adjustable pantry shelves (most models), shoe cubby (VBF), full-length closets w/StorMore nightstands, residential carpet, radius glass shower enclosure (VBF), porcelain foot-flush toilet, flip-up solid step, Venture bottle opener/dog tie-out, jiffy w/fold-down center console, Furrrion oven & 3-burner cooktop w/flush-glass cover, tile backsplash, multi-directional LED power awning.

OPTIONS

Off-the-grid solar PKG, incl. (1) 100W panel & controller, (4) power stabilizer jacks, 15,000 BTU A/C IPO 13,500 BTU A/C, 50AMP service w/2nd A/C prep, 2nd A/C (50AMP w/prep required), table & chairs IPO booth (N/A 24IVMS), tri-fold sofa, theater seating w/heat, massage & USB ports (STD 312), King-U sofa (N/A 24IVMS, 25IVFK), 8 CU FT gas/electric refrigerator, ¾ fiberglass front cap w/window, upgraded Serta mattress*, LevelMate PRO leveling system*, lighted power tongue jack*, aluminum rims*, swing-away bumper-mount griddle, Furrrion observation/backup camera.

**Included in the 1.3 Expedition Package*

TRAIL PACKAGE (OPTION)

Spare tire/carrier, ladder, black tank flush.

ENTERTAINMENT PACKAGE (OPTION)

40" HD LED TV w/swing arm bracket*.

**Included in the Expedition Package 1.3*

TRAVEL TRAILERS	ST24IVMS	ST25IVFK	ST25IVRK	ST270VBH	ST27IVMB	ST28IVBH	ST29IVRK	ST312VIK	ST320VIK	ST327VIK	ST332VBH
UVW (Unloaded Vehicle Weight)*	5,790	6,060	6,160	6,280	6,520	6,640	6,850	7,520	7,940	8,270	8,200
Dry Hitch Weight*	690	850	640	750	710	700	660	800	990	850	910
Dry Axle Weight*	5,100	5,210	5,520	5,530	5,810	5,940	6,190	6,720	6,950	7,420	7,290
CCC (Cargo Carrying Capacity)	1,560	1,315	1,170	1,110	2,640	2,515	2,280	1,700	1,340	2,575	2,645
Interior Height	82"	82"	82"	82"	82"	82"	82"	82"	82"	82"	82"
Exterior Height with A/C	11' 2"	11' 2"	11' 2"	11' 2"	11' 4"	11' 4"	11' 4"	11' 4"	11' 4"	11' 6"	11' 6"
Exterior Width	96"	96"	96"	96"	96"	96"	96"	96"	96"	96"	96"
Exterior Length**	28' 7"	28' 9"	28' 7"	30' 8"	30' 7"	32' 5"	33' 3"	34' 11"	35' 11"	36' 4"	37' 11"
Refrigerator (Cubic Feet)	10	10	10	10	10	10	10	10	10	10	10
Water Heater Cap. (Gal. Gas w/DSI)	6	6	6	6	6	6	6	6	6	6	6
Fresh Water Capacity (Gallon)	45	45	45	45	45	45	45	45	45	45	45
Black Water Capacity (Gallon)	32	32	32	32	32	32	32	32	32	32	32
Gray Water Capacity (Gallon)	32	64	64	32	64	32	64	32	32	32	64
LP Gas Capacity (Lbs.)	40	40	40	40	40	40	40	40	40	40	40
Furnace BTUs (1,000s)	30	30	30	30	30	30	30	30	30	30	30
Tire Size	15"	15"	15"	15"	15"	15"	15"	15"	15"	15"	15"
Awning	18'	16'	20'	20'	20'	20'	20'	20'	18'	10'/10'	20'

*This weight reflects the rolling average unit weight for each model. Your trailer weight will vary according to optional equipment.

**Exterior length is measured from rear of bumper to leading edge of coupler.



985 N 900 W | Shipshewana, IN 46565 | www.venture-rv.com

Due to continual research and advances, manufacturer reserves the right to change specifications, design, price and equipment without notice, and assumes no responsibility for any error in this literature. Some items shown are not included as standard or optional equipment.

©2020 Venture | 12/29/20 | 25M

