



SPORTTREK TOURING EDITION

Luxury Travel Trailers



Designed for campers, by campers.

SPORTTREK TOURING EDITION

The SportTrek Touring line of luxury travel trailers offers thoughtful new features and fresh, elegant design elements inspired by people who love camping.

Touring's kitchens are elegant, yet functional, and exhibit all the features of your home kitchen. Island units boast an appliance hutch, and all offer generous storage, skylights with shades, tilt-out utility tray and waste basket storage. (STT343VIK shown)



Bedrooms offer barn-style door(s), storage galore, upgraded foam mattress, USB and 110V access above the bed, CPAP-sized shelf with 110V outlet, and TV/satellite connections. In addition, two gas struts assist in lifting the bed to access under-bed storage. (STT343VIK shown)



SportTrek Touring STT343VIK, shown in Slate Décor, boasts an island kitchen with solid surface countertop and extremely comfortable seating accommodations.



Living spaces are a dream, with 30-inch fireplaces in the living room and master bedroom. TVs are either 40-inch or 50-inch, depending on floorplan (STT343VIK shown with 50" TV).

2' ACCESSORY HITCH

0/H CABINET **10 CU FT REFRIG** **0/H CABINET**

42" GRAND DINETTE

0/H CABINET **70" TRI-FOLD SOFA / BED**

WALK-IN PANTRY **80" X 36" SHOWER** **0/H CABINET**

FIREPLACE **EXT. CENTER**

70" X 80" KING BED

0/H CABINET

16' AWNING **FLIP-UP SOLID STEPS**

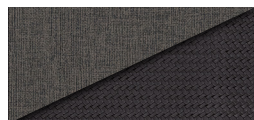
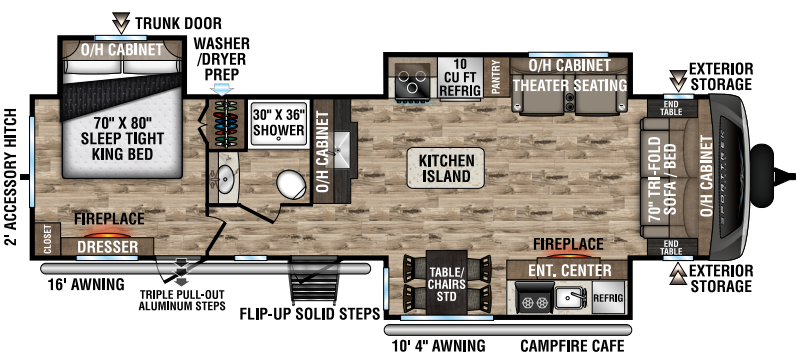
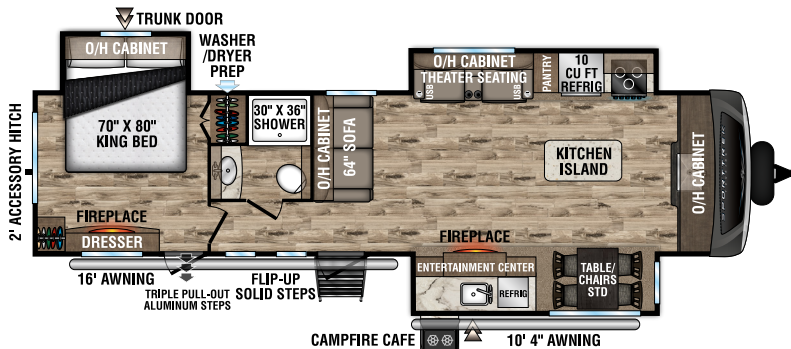
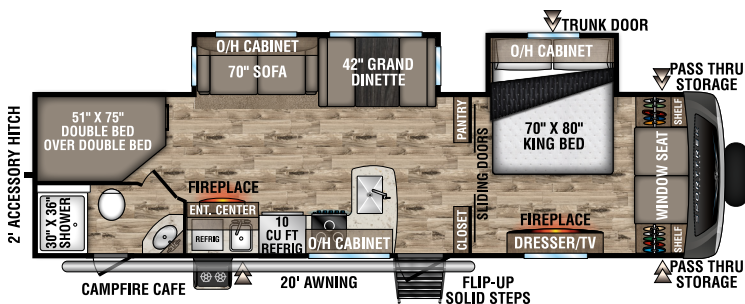
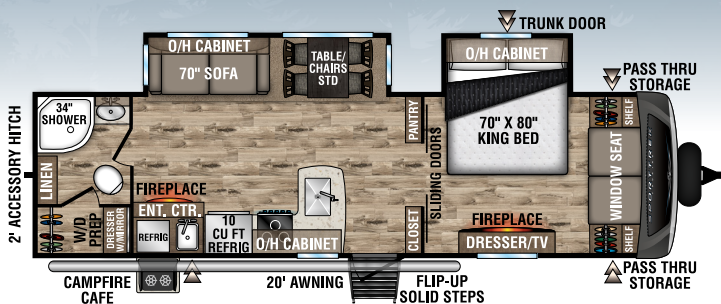
TRUNK DOOR

DRESSER/TV **FIREPLACE**

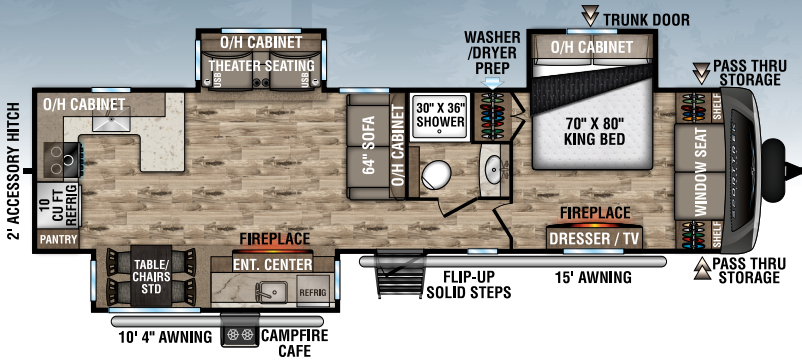
WINDOW SEAT **SHIELD** **SHIELD**

PASS THRU STORAGE **PASS THRU STORAGE**

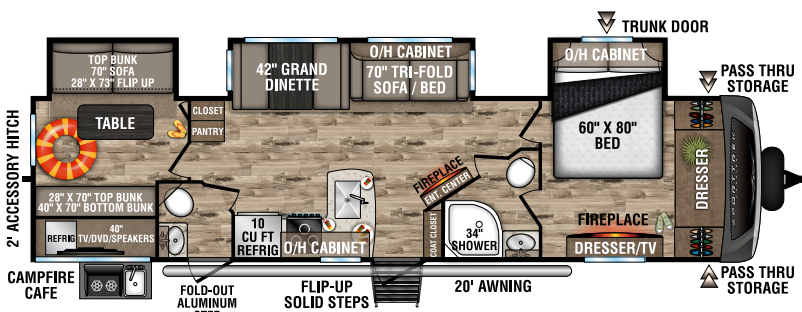
LINEN



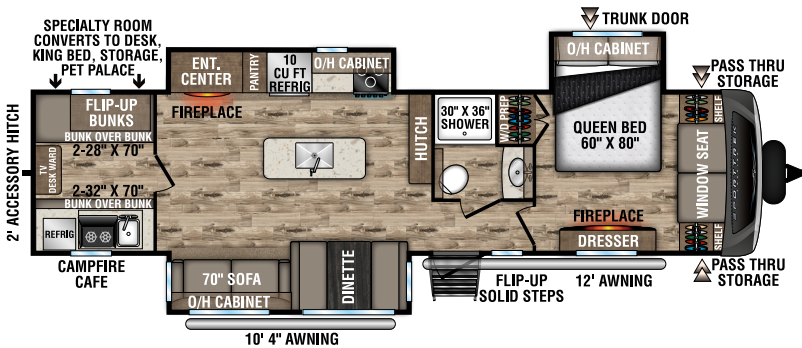
Floorplans



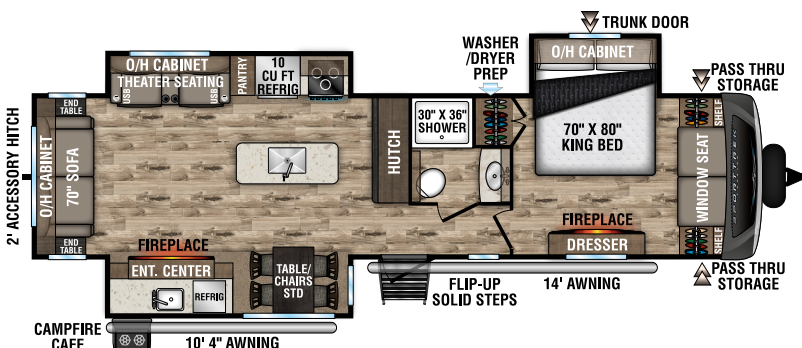
STT336VRK | 8,810 UVW | 37' 8" LENGTH | SLEEPS 4



STT343VBH | 8,890 UVW | 37' 11" LENGTH | SLEEPS 12



STT343VIB | 8,680 UVW | 38' LENGTH | SLEEPS 11 **NEW**



STT343VIK | 8,870 UVW | 37' 8" LENGTH | SLEEPS 4



SportTrek Touring's Weather Shield features a radiant foil barrier, forced heat, enclosed underbelly, enclosed gate valves and reflective PVC roof membrane with limited 20-year warranty.



LevelMate PRO lets you level your unit on the first try! This feature calculates and displays the height required to achieve a perfectly level position. An arrow is displayed to indicate where the height needs to be added, further simplifying what has traditionally been time consuming guesswork. Simply level, using the height indicated and when the red level indicator turns green, you're done!

Interior Features



10 CU FT double-door refrigerator with antique white cabinet front.

Pantry provides tons of storage with adjustable shelves.



Cozy X2 – standard 30-inch bedroom fireplace produces 5,000 BTUs of electric heat, plus an additional standard 30-inch living room fireplace provides ambience throughout the trailer.



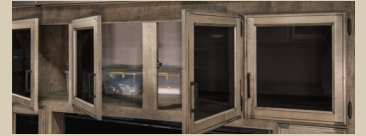
Elegant modern farmhouse light fixture.



Flush-mounted 21-inch stove with glass cover and accent lighting.



Skylight with shade provides natural lighting.



Overhead storage above entertainment center offers the most storage in its class.



Tri-fold sofa is easy to convert and comfortable, whether used as a sofa or a bed (VBF).



Safe Tek Box hidden charging station and valuables storage.



Extra-large pots and pans storage drawer.



Optional solar monitor and 100 Watt solar panel.



Bedroom closets are roomy, offer ample storage, and washer/dryer prep is standard (varies by floorplan).



Sink cover drains food and dishes, and rolls out of the way for sink use.



Stay connected with Venture RV's control panel with Bluetooth.



Theater seats include a center fold-down arm, which includes a 110V receptacle and USB connection.



Theater seating includes USB plug, heat and massage controls at your fingertips.



Master bedroom features window-seat bench storage, and under-bed storage.

Exterior Features



4 power stabilizer jacks, each with its own independent motor.



2-Inch accessory hitch is integrated into the frame.



Venture bottle opener/doggie tie-down.



This Campfire Café outside kitchen includes large refrigerator, pullout cooktop, sink with hot and cold water and tons of storage areas. It's standard on the 333VFK, 333VMI, 336VRK and the 343VIK.



Available Off-the-Grid solar package.



Screen Shot door and solid flip-up step.

Packages & Options

ELITE PACKAGE 1.3 (OPTION)

Venture connectivity board w/bluetooth control, Modern Farmhouse design, 21" Furrion Oven, 10 CU FT double-door refrigerator, WIFI prep, entry door w/clear-view window, HDMI/DVD stereo w/5.1 AMP USB charger, large single-bowl under-mount stainless steel kitchen sink, (2) dish drying sink covers, western pine board accent walls, new cabinet pulls, 40" or 50" TV w/swing arm, Venture LevelMate PRO, heirloom comforter w/pillow package, oval stainless steel bathroom sink, Venture cutting board, Go Power roof-mounted solar prep, tucked bumper w/2" accessory hitch, Serta Memory Foam mattress, live edge accent tops, barn door-style passage doors, rear backup lighting.

WEATHER-SHIELD PACKAGE (MANDATORY)

Forced air heated & enclosed underbelly, enclosed gate valves, 360 degree residential fiberglass insulation, 360 degree radiant foil insulation, radiant foil- wrapped tanks & reflective PVC roof membrane w/20-year warranty.

SPORTTREK TOURING PACKAGE (MANDATORY)

Automotive panoramic front window, window seat (most models), friction hinge entry door, interior entry door motion light, pass-thru motion light, stainless steel appliances, 5/8" tongue & groove plywood floor decking, NXG Huck bolt frame, EZ Lube hubs, under-mount spare tire, rear ladder, walkable roof, hot & cold outside shower, 6 GAL Gas/Electric DSI water heater, black tank flush system, Furrion marine-grade detachable power cord, prewired for backup camera, stabilizer accent lighting, 15K BTU A/C, 50A service w/2nd A/C prep, LED lighted power awning, Keyed Alike key system, battery disconnect, 3-burner high-output range w/flush-mount glass cover, microwave, Safe-Tek hidden storage w/charging center, 82" interior ceiling, 72" slideout height, full-extension ball bearing drawer guides, flip-up solid step.

TOURING EXTERIOR LUXURY PACKAGE (MANDATORY)

Painted fiberglass front cap w/integrated LED light, upgraded graphics package, BAL independent electric stabilizer jacks, lighted power tongue jack, tinted frameless windows, slam-latch baggage doors w/magnetic catches, motion-activated pass-thru storage light, foldup trek step, Venture bottle opener/dog tie down, (2) 30 LB LP tanks w/cover, screen shot screen door.

TOURING INTERIOR LUXURY PACKAGE (MANDATORY)

Solid-surface kitchen countertops, designer valances w/fabric nightshades, solid hardwood cabinet doors & drawer faces, residential carpet, motion- activated interior entry light, Beauflor wood plank flooring w/7-year limited warranty, porcelain foot- flush toilet, deluxe tri-fold sofa & theater seats (varies by model), king bed master suite (queen 343VBH, 343VIB), washer/dryer prep(VBF), heat & message in theater seating (VBF), (2) 30" frameless fireplaces.

OPTIONS

Off-the-grid solar PKG, incl. (1) 100W panel & controller, tri-fold sofa, booth dinette, table & chairs, 2nd A/C, LevelMate PRO leveling system, 40" TV (including swing arm bracket) (272, 302, 312, 343VIB, 343VBH), 50" TV (including swing arm bracket) (333s, 336, 343VIK), King-U sofa (super-slide models only), theater seating w/heat, massage & USB ports IPO tri-fold (272VRK, 302, 312), 8 CU FT gas/electric refrigerator, swing-away bumper-mount griddle, Furrion observation/backup camera, Maxx Air bedroom fan.

| TRAVEL TRAILERS | STT272VRK | STT302VRB | STT312VBH | STT333VFK | STT333VMI | STT336VRK | STT343VBH | STT343VIB | STT343VIK |
|--|-----------|-----------|-----------|------------|------------|------------|-----------|------------|------------|
| UVW (Unloaded Vehicle Weight)* | 7,290 | 7,570 | 7,710 | 8,800 | 8,820 | 8,810 | 8,890 | 8,680 | 8,870 |
| Dry Hitch Weight* | 930 | 900 | 1,010 | 1,110 | 1,220 | 1,140 | 1,130 | 1,175 | 1,160 |
| Dry Axle Weight* | 6,360 | 6,670 | 6,700 | 7,690 | 7,600 | 7,670 | 7,760 | 7,505 | 7,810 |
| CCC (Cargo Carrying Capacity) | 1,975 | 1,710 | 1,630 | 2,200 | 2,190 | 2,205 | 2,105 | 2,308 | 2,115 |
| Interior Height | 82" | 82" | 82" | 82" | 82" | 82" | 82" | 82" | 82" |
| Exterior Height with A/C | 11' 4" | 11' 4" | 11' 4" | 11' 6" | 11' 6" | 11' 6" | 11' 6" | 11' 6" | 11' 6" |
| Exterior Width | 96" | 96" | 96" | 96" | 96" | 96" | 96" | 96" | 96" |
| Exterior Length** | 31' 9" | 33' 6" | 35' 9" | 36' 11" | 36' 11" | 37' 8" | 37' 11" | 38' 2" | 37' 8" |
| Refrigerator (Cubic Feet) | 10 | 10 | 10 | 10 | 10 | 10 | 10 | 10 | 10 |
| Water Heater Capacity (Gal. G/E w/DSI) | 6 | 6 | 6 | 6 | 6 | 6 | 6 | 6 | 6 |
| Fresh Water Capacity (Gallon) | 45 | 45 | 45 | 45 | 45 | 45 | 45 | 45 | 45 |
| Black Water Capacity (Gallon) | 32 | 32 | 32 | 32 | 32 | 32 | 64 | 32 | 32 |
| Gray Water Capacity (Gallon) | 64 | 64 | 32 | 64 | 32 | 64 | 64 | 32 | 32 |
| LP Gas Capacity (Lbs.) | 60 | 60 | 60 | 60 | 60 | 60 | 60 | 60 | 60 |
| Furnace BTUs (1,000s) | 30 | 30 | 30 | 30 | 30 | 30 | 30 | 30 | 30 |
| Tire Size | 15" | 15" | 15" | 15" | 15" | 15" | 15" | 15" | 15" |
| Awning | 16' | 20' | 20' | 16'/10' 4" | 16'/10' 4" | 15'/10' 4" | 20' | 12'/10' 4" | 14'/10' 4" |

*This weight reflects the rolling average unit weight for each model. Your trailer weight will vary according to optional equipment.

**Exterior length is measured from rear of bumper to leading edge of coupler.



985 N 900 W | Shipshewana, IN 46565 | www.venture-rv.com

Due to continual research and advances, manufacturer reserves the right to change specifications, design, price and equipment without notice, and assumes no responsibility for any error in this literature. Some items shown are not included as standard or optional equipment.

©2020 Venture | 1/25/21 | 25M

