



# SPORTTREK TOURING EDITION

Luxury Travel Trailers



*Designed for campers, by campers.*

# SPORTTREK TOURING EDITION

Touring's kitchens are elegant, yet functional, and exhibit all the features of your home kitchen. Island units boast an appliance hutch, and all offer generous storage, skylights with shades, tilt-out utility tray and waste basket storage.

(STT333VMI shown)



SportTrek Touring Edition is all you could desire and more. You'll soon find this to be your home away from home with modern farmhouse cabinetry and residential size appliances.

## KEY FEATURES:

- Luxury travel trailer with modern farmhouse design
- All floorplans have bedroom slideouts, including seven with king beds
- Solid surface kitchen countertops
- Automotive painted full fiberglass front cap with panoramic automotive front window
- Eight floorplans with outside kitchens
- Two fireplaces producing up to 9,500 BTUs of electric heat



SportTrek Touring STT333VMI, shown in Ash Décor, boasts an island kitchen with solid surface countertop and extremely comfortable seating accommodations.



Bedrooms offer barn-style door(s), storage galore, upgraded foam mattress, USB and 110V access above the bed, CPAP-sized shelf with 110V outlet, and TV/satellite connections. In addition, two gas struts assist in lifting the bed to access under-bed storage. (STT333VMI shown)

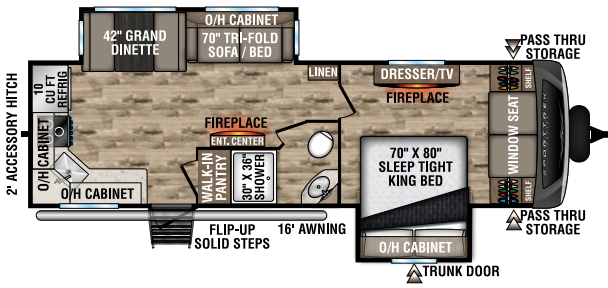


Living spaces are a dream, with 30-inch fireplaces in the living room and master bedroom. TVs are either 40-inch or 50-inch, depending on floorplan (STT333VMI shown with 50" TV).



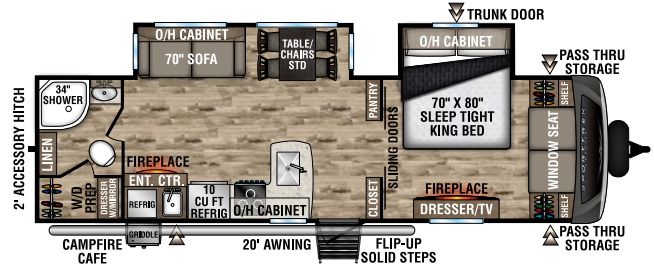
Most models feature a cozy window seat in the master bedroom, with additional storage under the bench to maximize the space. (STT343VIK shown)

# SPORTREK TOURING EDITION FLOORPLANS



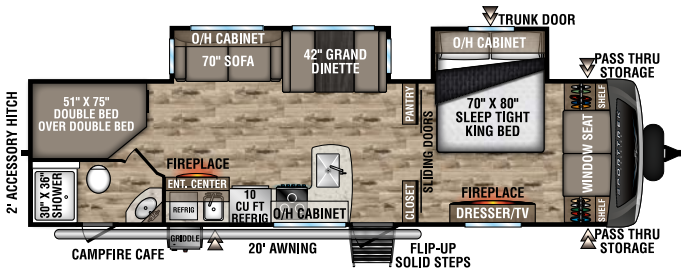
## STT272VRK

UVW – 7,220 lbs. | Exterior Length – 31' 6" | Sleeps – 6



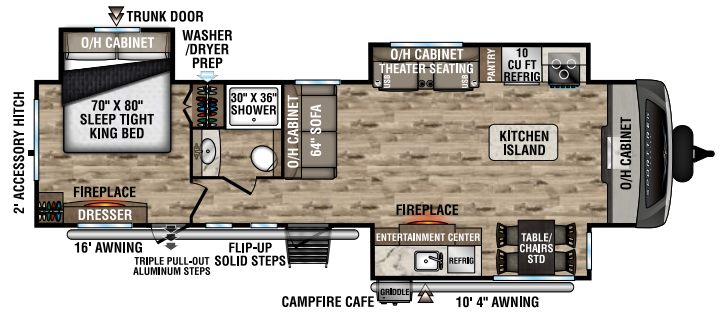
## STT302VRB

UVW – 7,500 lbs. | Exterior Length – 33' 3" | Sleeps – 4



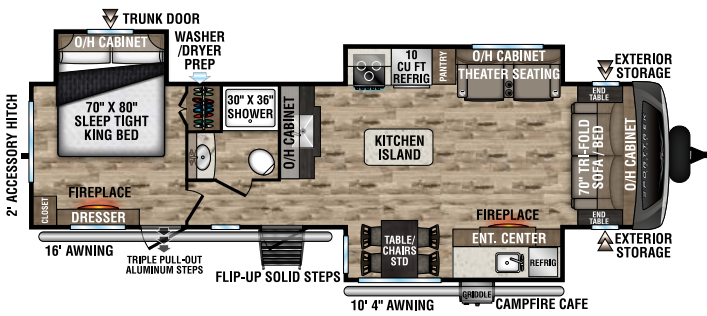
## STT312VBH

UVW – 7,980 lbs. | Exterior Length – 35' 9" | Sleeps – 10



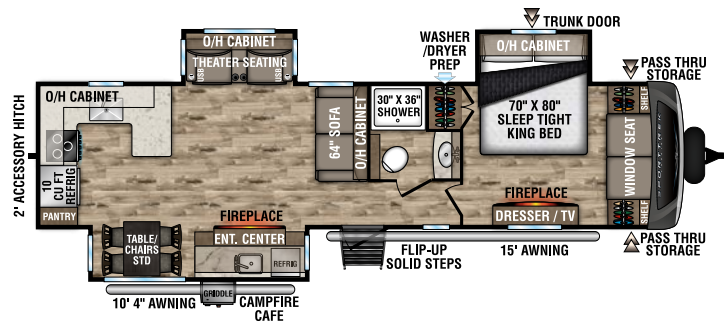
## STT333VFK

UVW – 9,040 lbs. | Exterior Length – 36' 8" | Sleeps – 4



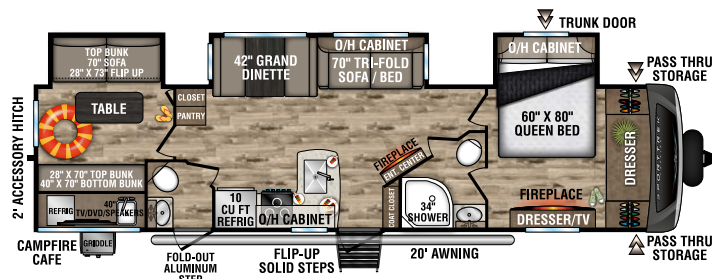
## STT333VMI

UVW – 8,850 lbs. | Exterior Length – 36' 8" | Sleeps – 4



## STT336VRK

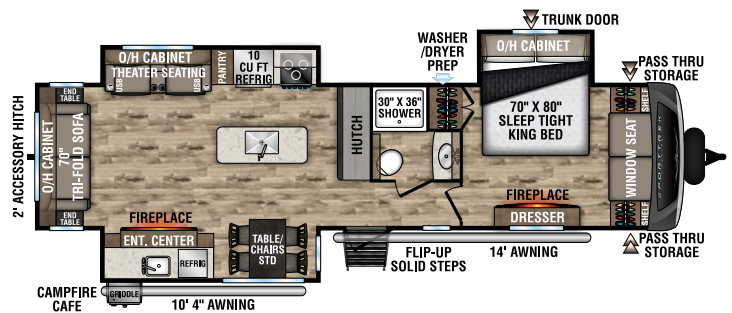
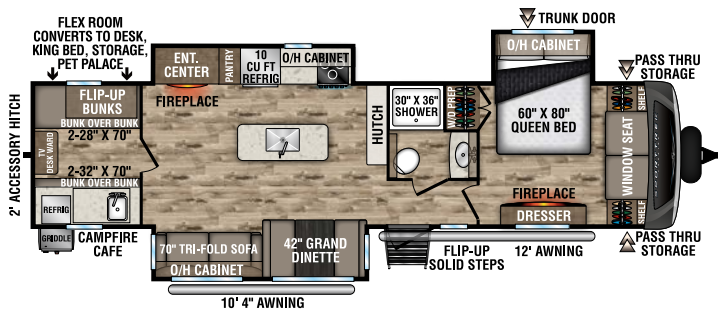
UVW – 8,860 lbs. | Exterior Length – 37' 8" | Sleeps – 4



## STT343VBH

UVW – 9,040 lbs. | Exterior Length – 37' 8" | Sleeps – 11

# SPORTREK TOURING EDITION FLOORPLANS



## STT343VIB

UVW – 8,950 lbs. | Exterior Length – 38' 2" | Sleeps – 11

## STT343VIK

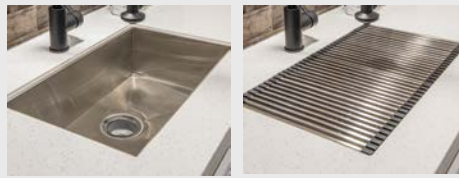
UVW – 8,970 lbs. | Exterior Length – 37' 5" | Sleeps – 4



10 CU FT double-door refrigerator with antique white cabinet front.



Flush-mounted 21-inch stove with glass cover and accent lighting.



Sink cover drains food and dishes, and rolls out of the way for sink use.

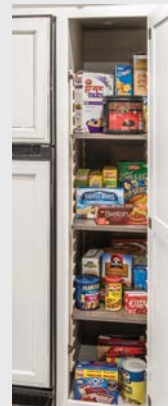


Cozy X2 – standard 30-inch bedroom fireplace produces 5,000 BTUs of electric heat, plus an additional standard 30-inch living room fireplace provides ambience throughout the trailer.

Safe Tek Box hidden charging station and valuables storage.



Tri-fold sofa is easy to convert and comfortable, whether used as a sofa or a bed (VBF).



Pantry provides tons of storage with adjustable shelves.



Theater seating w/heat, massage & USB ports (VBF).

	STT272VRK	STT302VRB	STT312VBH	STT333VFK	STT333VMI	STT336VRK	STT343VBH	STT343VIB	STT343VIK
UVW (Unloaded Vehicle Weight)*	7,220	7,500	7,980	9,040	8,850	8,860	9,040	8,950	8,970
Dry Hitch Weight*	780	920	950	1,120	1,220	1,110	1,210	1,210	1,150
Dry Axle Weight*	6,440	6,580	7,030	7,920	7,630	7,750	7,830	7,740	7,820
CCC (Cargo Carrying Capacity)	2,045	1,780	1,360	1,760	1,960	1,935	1,755	1,838	1,815
Interior Height	82"	82"	82"	82"	82"	82"	82"	82"	82"
Exterior Height with A/C	11' 4"	11' 4"	11' 4"	11' 6"	11' 6"	11' 6"	11' 6"	11' 6"	11' 6"
Exterior Width	96"	96"	96"	96"	96"	96"	96"	96"	96"
Exterior Length**	31' 6"	33' 3"	35' 9"	36' 8"	36' 8"	37' 8"	37' 8"	38' 2"	37' 5"
Refrigerator (Cubic Feet)	10	10	10	10	10	10	10	10	10
Water Heater Cap. (Gal. G/E w/DSI)	6	6	6	6	6	6	6	6	6
Fresh Water Capacity (Gallon)	45	45	45	45	45	45	45	45	45
Black Water Capacity (Gallon)	34.5	34.5	34.5	34.5	34.5	34.5	69	34.5	34.5
Gray Water Capacity (Gallon)	69	69	34.5	69	34.5	69	69	34.5	34.5
LP Gas Capacity (Lbs.)	60	60	60	60	60	60	60	60	60
Furnace BTUs (1,000s)	30	30	30	30	30	30	30	30	30
Tire Size	15"	15"	15"	15"	15"	15"	15"	15"	15"
Awning	16'	20'	20'	16'/10' 4"	16'/10' 4"	15'/10' 4"	20'	12'/10' 4"	14'/10' 4"

\*This weight reflects the rolling average unit weight for each model. Your trailer weight will vary according to optional equipment.

\*\*Exterior length is measured from rear of bumper to leading edge of coupler.

## ELITE PACKAGE 1.4

- Venture LevelMate PRO
- Go Power roof-mounted solar prep
- Tucked bumper w/2" accessory hitch
- Live edge accent tops
- Rear backup lighting
- Exterior docking station
- Venture connectivity board w/ bluetooth control
- Modern farmhouse design
- WiFi prep
- Entry door w/clear-view window
- HDMI/DVD stereo w/5.1 AMP USB charger
- Western Pine board accent walls
- New cabinet pulls
- 40" or 50" smart TV w/swing arm
- Modern farmhouse-style passage doors
- RV Airflow System w/up to 40% more A/C air flow
- Oval stainless steel bathroom sink
- Heirloom comforter w/pillow package
- Serta Foam King or Queen mattress
- 21" Furrion Oven
- 10 CU FT double-door refrigerator
- Large single-bowl under-mount stainless steel kitchen sink
- (2) dish drying sink covers
- Venture cutting board
- Fiberglass slide out end walls
- Pet defender screen protector
- Beauflor slide out floors (no carpet)

## WEATHER-SHIELD PACKAGE (MANDATORY)

- Forced air heated & enclosed underbelly
- Enclosed gate valves
- 360 degree residential fiberglass insulation
- 360 degree radiant foil insulation
- Radiant foil-wrapped tanks & reflective PVC roof membrane w/ limited lifetime warranty
- Azdel Onboard composite panels

## SPORTREK TOURING PACKAGE (MANDATORY)

- Pass-thru motion light
- 5/8" tongue & groove plywood floor decking
- NXG Huck bolt frame
- EZ Lube hubs

- Under-mount spare tire
- Rear ladder
- Walkable roof
- Hot & cold outside shower
- Black tank flush system
- Furrion marine-grade detachable power cord
- Prewired for backup camera
- Stabilizer accent lighting
- LED lighted power awning
- Keyed Alike key system
- Battery disconnect
- Safe-Tek hidden storage w/ charging center
- 82" interior ceiling
- 72" slideout height
- Flip-up solid step
- Automotive panoramic front window
- Window seat (most models)
- Friction hinge entry door
- Interior entry door motion light
- 6 GAL Gas/Electric DSI water heater
- 15K BTU A/C, 50A service w/2nd A/C prep
- Full-extension ball bearing drawer guides
- Stainless steel appliances
- 3-burner high-output range w/flush-mount glass cover
- Microwave

## EXTERIOR LUXURY PACKAGE (MANDATORY)

- Painted fiberglass front cap w/integrated LED light
- Upgraded graphics package
- BAL independent electric stabilizer jacks
- Lighted power tongue jack
- Tinted frameless windows
- Slam-latch baggage doors w/magnetic catches
- Motion-activated pass-thru storage light
- Foldup trek step

Ash Décor

- Venture bottle opener/dog tie down
- (2) 30 LB LP tanks w/cover
- Screen Shot screen door

## INTERIOR LUXURY PACKAGE (MANDATORY)

- Solid-surface kitchen countertops
- Designer valances w/fabric nightshades
- Solid hardwood cabinet doors & drawer faces
- Motion-activated interior entry light
- Beauflor wood plank flooring w/7-year limited warranty
- Porcelain foot-flush toilet
- Deluxe tri-fold sofa & theater seats (varies by model)
- King bed master suite (queen 343VBH, 343VIB)
- Washer/dryer prep (VBF)
- Heat & massage in theater seating (VBF)
- (2) 30" frameless fireplaces

## OPTIONS

- LevelMate PRO leveling system
- Off-the-Grid solar PKG, incl. (1) 100W panel & controller
- Tri-fold sofa
- 2nd A/C
- 40" smart TV (including swing arm bracket) (272, 302, 312, 343VIB, 343VBH)
- 50" smart TV (including swing arm bracket) (333s, 336, 343VIK)
- King-U sofa (super-slide models only)
- Theater seating w/heat, massage, & USB ports IPO tri-fold (272VRK, 302, 312)
- Swing-away bumper-mount griddle
- Furrion observation/backup camera
- Booth dinette, table, & chairs
- Maxx Air bedroom fan
- 8 CU FT gas/electric refrigerator

Slate Décor

# EXTERIOR FEATURES



Multi-directional Power awning with LED lights

Frameless windows

Slam latch baggage doors with magnetic catches

Painted full fiberglass front cap w/panoramic automotive front window



All SportTrek Tourings feature a solid flip-up step and friction-hinged entry door with Screen Shot screen door.



This Campfire Café outside kitchen includes large refrigerator, pullout griddle, sink with hot and cold water and tons of storage areas. It's standard on the 333VFK, 333VMI, 336VRK and the 343VIK.



4 power stabilizer jacks, each with its own independent motor.



2-Inch accessory hitch is integrated into the frame.



Available Off-the-Grid solar package.

LevelMate PRO lets you level your unit on the first try! This feature calculates and displays the height required to achieve a perfectly level position.

SportTrek Touring's Weather Shield features a radiant foil barrier, forced heat, enclosed underbelly, and enclosed gate valves.



SPORTTREK TOURING CONSTRUCTION



985 N 900 W | Shipshewana, IN 46565 | [www.venture-rv.com](http://www.venture-rv.com)

Due to continual research and advances, manufacturer reserves the right to change specifications, design, price, and equipment without notice, and assumes no responsibility for any error in this literature.

Some items shown are not included as standard or optional equipment.

©2022 Venture | 00/00/22 | 00M