



# SPORTTREK

TOURING EDITION

# 5

2024

Luxury Fifth Wheels

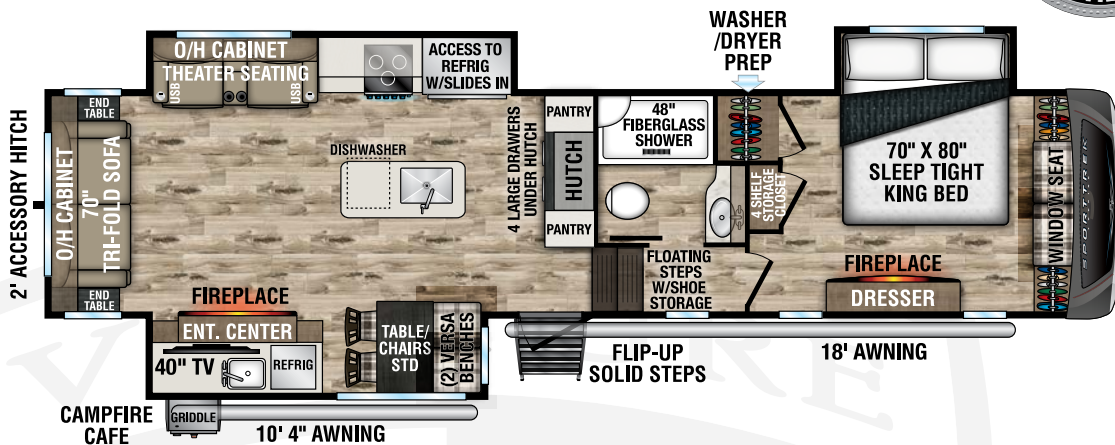
Designed for Campers by Campers!



**NEW**

**STT353VIK**

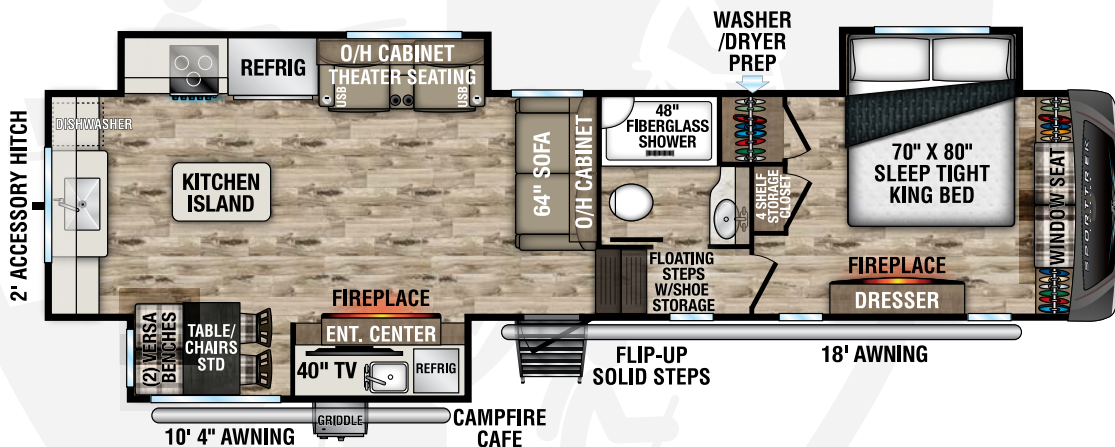
UVW - 11,210  
Exterior Length - 37'  
Sleeps - 4



**NEW**

**STTF353VRK**

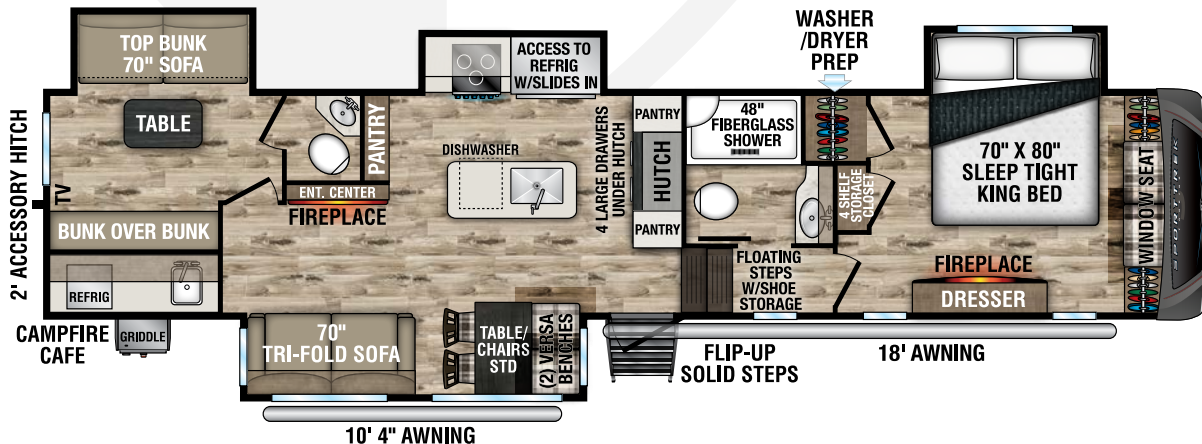
UVW - TBD  
Exterior Length - 37'  
Sleeps - 4



**NEW**

**STT354VBH**

UVW - 12,150  
Exterior Length - 39' 10"  
Sleeps - 8



## EXTERIOR

BAL NXG Huck -bolted Drop frame  
BAL 4-Point Electric Leveling System  
BAL Accessory Hitch w/300# hitch and 3,000# Towing  
Best in Class 185 cu ft of Pass Thru Storage  
Heated and Enclosed One-piece Underbelly  
Motorhome Style Slam Latch Baggage Doors  
Mor-Ryde Rubber Pin Box  
Mor-Ryde CRE 3,000 Suspension System  
Easy Access Convenience Center  
Outside Shower w/Hot and Cold Water (Located in Docking Area)  
Laminated Rear Wall and Sidewalls  
Fiberglass Slideout Endwalls  
Frameless Tinted Windows  
High Gloss Fiberglass Front Cap w/Automotive Paint  
Automotive Front Windshield Integrated Into Front Cap  
Tufflex PVC Roofing w/Limited Lifetime Warranty  
Steel Heavy Duty Rear Ladder  
Rear Back Up Lighting  
Dexter Heavy Duty Axles  
Goodyear Endurance Tires  
Mor-Ryde Flip-up Step w/double Top Step  
Aluminum Wheels With Undermount Full Size Spare  
Friction Hinge Door with Screen Shot and Pet Defender Screen Door  
Rear Observation Camera Prep  
Battery Disconnect Switch  
50 Amp Service with Framed and Pre-wired For 2nd A/C  
Electric Awning with LED Lighting  
Motorhome Legless Awning with LED Lighting and Windsensor (on Slideout) (VBF)

## INTERIOR

5/8" Tongue and Groove Plywood Floors  
Blackout Roller Shades  
2x 5,000 BTU Fireplaces (1-Livingroom and 1-Bedroom)  
Decorative Crown Molding  
Solid Hardwood Cabinet Doors/ Drawers, Heirloom Maple and Antique White w/Glazing  
Steel Trimmed Entry Door w/Venture Header  
Dinette Table w/2-Chairs with Seat Storage and 2-Versa Benches

## KITCHEN FEATURES

Stainless Steel Undermount Farmers Sink  
High-Rise Oil Rubbed Faucet w/Sprayer  
Solid Surface Countertops  
Antique White w/Oil Rubbed Glazing  
Pantry w/Adjustable Shelves  
Wine Rack

## APPLIANCES & UTILITIES

18" GE Stainless Steel Profile Dishwasher  
Fogatti Tankless On-demand Water Heater  
15 K BTU A/C w/Hepa Filter and RV Airflow System 40% more Efficient  
30K BTU Furnace  
50" LED Smart TV  
JBL Sound Bar w/Bluetooth  
21" Furrion Oven w/Cooktop and Glass Cover  
16 cu ft 12V Double Door Refrigerator  
Outside Kitchen featuring 40" LED Smart TV w/Swing Arm Bracket, JBL Flip Speaker w/Bluetooth, 3 cu ft. Refrigerator, Lodge Griddle, Stainless Steel Sink, Spray hose, adjustable faucet w/Hot and Cold Water  
Washer/Dryer Prep  
2-30# LP Tanks  
200W solar panel w/ 30 amp MPPT controller

## BEDROOM FEATURES

Maximum Storage Design 4-closets  
2-Blanket Storage Areas and 1-Dresser w/Hidden Storage  
Serta 70"x 80" King Mattress w/Under The Bed Storage  
Cushioned Window Seat with Storage  
Western Pine Board Decorative Accent Walls  
CPAP Sized Shelf w/110 Outlet  
Cable TV and Satellite Ready  
WIFI Prep

## BATHROOM FEATURES

30"x48" Residential Fiberglass Shower w/Shelf, Seat and Glass Door  
Sky Light  
Motion Activated Lighting  
Porcelain Foot Flush Toilet  
Towel Rack  
Residential Sized Medicine Cabinet

## WEATHER SHIELD

Wrapped Radiant Foil  
Heated Holding Tanks  
PVC Roof Membrane Reflects the Suns UV Rays  
Heat Vent In Pass-thru Storage

## SAFETY

Fire Extinguisher  
Break Away Switch  
Carbon Monoxide Detector  
Smoke Detector  
LP Leak Detector  
GFI Receptacles

## OPTIONS

13,5K A/C in Bedroom w/Hepa Filter and RV Air Flow System 40% More Efficient  
Bedroom 40" LED Smart TV w/swing arm  
MaxxAir Fan  
1200Watt Inverter

**Tufflex™ PVC Roofing**  
w/LIFETIME WARRANTY!  
dicor products



**NXG FRAME**  
The Next Generation in RV Frame Technology

RV COMPOSITE PANELS  
**AZDEL**  
ONBOARD®



985 N 900 W | Shipshewana, IN 46565 | [www.venture-rv.com](http://www.venture-rv.com)

Due to continual research and advances, manufacturer reserves the right to change specifications, design, price and equipment without notice, and assumes no responsibility for any error in this literature.

Some items shown are not included as standard or optional equipment.

©2023 Venture | 10/02/23 | 5M

Dealer: