



# SPORTTREK TOURING EDITION

Luxury Travel Trailers



*Designed for campers, by campers.*



# SPORTTREK TOURING EDITION

Touring's kitchens are elegant, yet functional, and exhibit all the features of your home kitchen. Island units boast an appliance hutch, and all offer generous storage, tilt-out utility tray and waste basket storage. (STT343VIK shown)

SportTrek Touring Edition is all you could desire and more, with modern farmhouse cabinetry and residential-size appliances.

## KEY FEATURES:

- Luxury travel trailer with modern farmhouse design
- All floorplans have bedroom slideouts, including seven with king beds
- Solid surface kitchen countertops
- Automotive painted full fiberglass front cap with panoramic automotive front window
- Nine floorplans with outside kitchens
- Two fireplaces producing up to 10,000 BTUs of electric heat

SportTrek Touring STT343VIK, shown in Doe Décor, boasts an island kitchen with solid surface countertop and extremely comfortable seating accommodations.



Living spaces are a dream, with 30-inch fireplaces in the living room and master bedroom. Smart TVs are either 40-inch or 50-inch with JBL sound bar, depending on floorplan (STT343VIK shown).

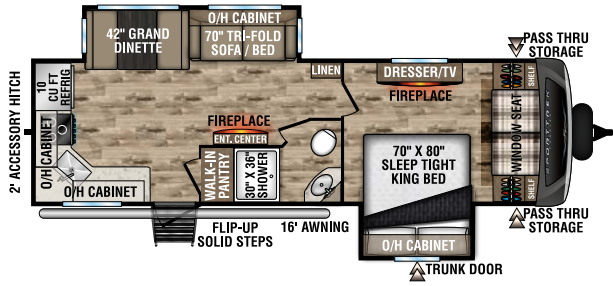


Bedrooms offer barn-style door(s), storage galore, upgraded Serta mattress, USB and 110V access above the bed, CPAP-sized shelf with 110V outlet, and TV/satellite connections. In addition, two gas struts assist in lifting the bed to access under-bed storage. Washer/dryer prep in most models. (STT343VIK shown)



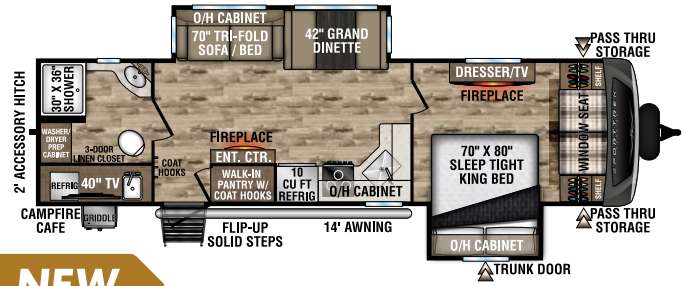
Most models feature a cozy window seat in the master bedroom, with additional storage under the bench to maximize the space. (STT343VIK shown)

# SPORTTREK TOURING EDITION FLOORPLANS



## STT272VRK

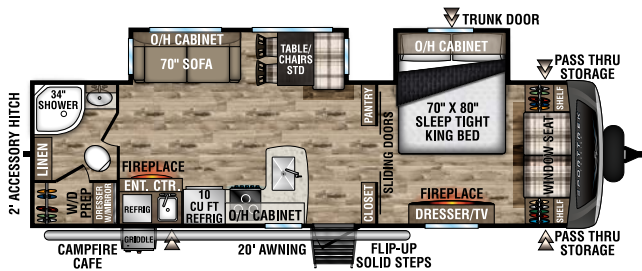
UVW – 7,920 lbs. | Exterior Length – 31' 6" | Sleeps – 6



**NEW**

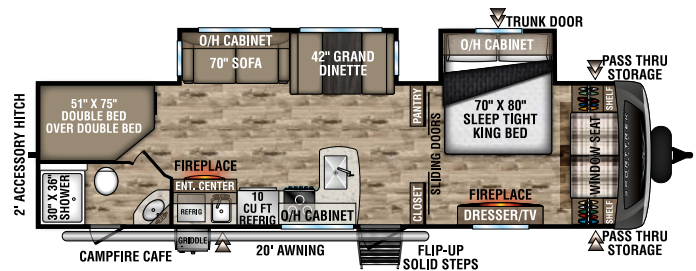
## STT292VRB

UVW – 8,020 lbs. | Exterior Length – 34' 8" | Sleeps – 6



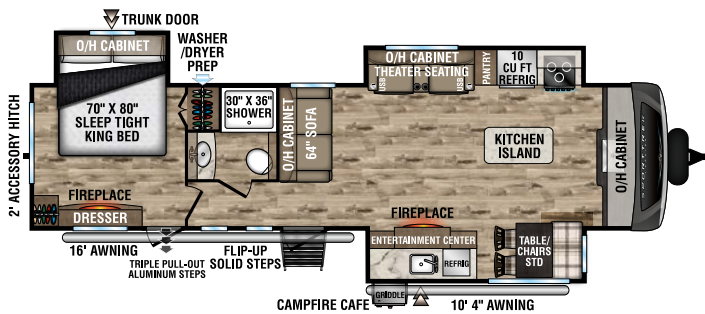
## STT302VRB

UVW – 7,610 lbs. | Exterior Length – 33' 3" | Sleeps – 4



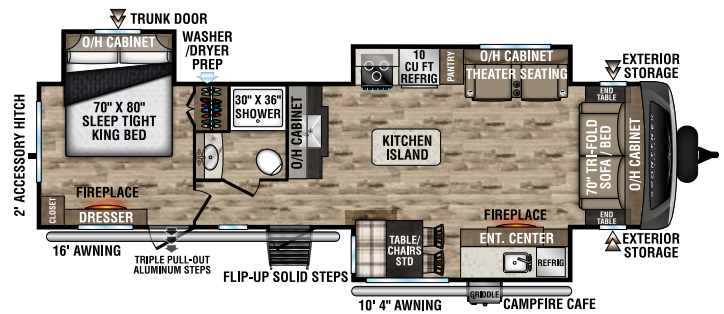
## STT312VBH

UVW – 7,980 lbs. | Exterior Length – 35' 9" | Sleeps – 10



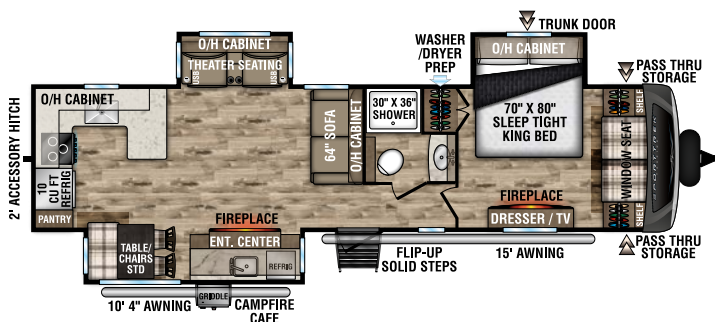
## STT333VFK

UVW – 9,040 lbs. | Exterior Length – 36' 8" | Sleeps – 4



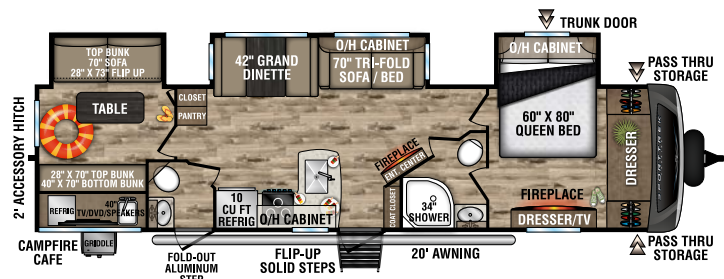
## STT333VMI

UVW – 8,890 lbs. | Exterior Length – 36' 8" | Sleeps – 4



## STT336VRK

UVW – 8,970 lbs. | Exterior Length – 37' 8" | Sleeps – 4

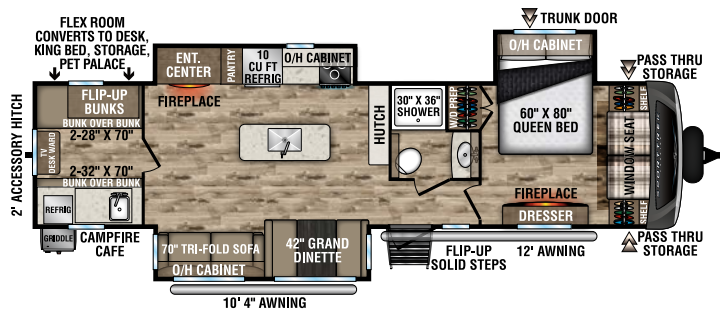


## STT343VBH

UVW – 9,040 lbs. | Exterior Length – 37' 8" | Sleeps – 11

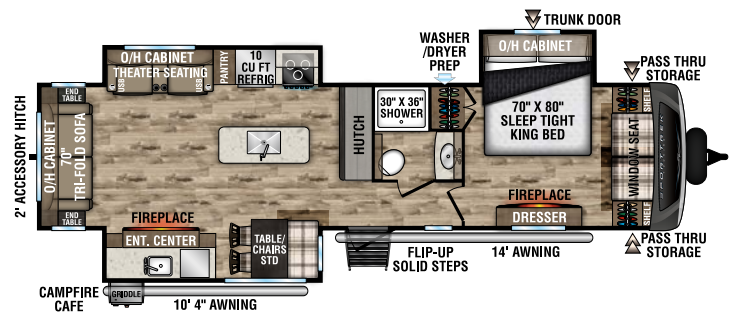


# SPORTTREK TOURING EDITION FLOORPLANS



## STT343VIB

UVW – 8,950 lbs. | Exterior Length – 38' 2" | Sleeps – 11



## STT343VIK

UVW – 8,970 lbs. | Exterior Length – 37' 5" | Sleeps – 4



10 CU FT double-door refrigerator with antique white cabinet front.



Flush-mounted 21-inch stove with glass cover and accent lighting.



Sink cover drains food and dishes, and rolls out of the way for sink use.



Cozy X2 – standard 30-inch bedroom fireplace produces 5,000 BTUs of electric heat, plus an additional standard 30-inch living room fireplace provides ambience throughout the trailer.

Safe Tek Box hidden charging station and valuables storage.



Pantry provides tons of storage with adjustable shelves.



Tri-fold sofa is easy to convert and comfortable, whether used as a sofa or a bed (VBF).



Theater seating w/heat, massage & USB ports (VBF).

	STT272VRK	STT292VRB	STT302VRB	STT312VBH	STT333VFK	STT333VMI	STT336VRK	STT343VBH	STT343VIB	STT343VIK
UVW (Unloaded Vehicle Weight)*	7,290	8,020	7,610	7,980	9,040	8,890	8,970	9,040	8,950	8,970
Dry Hitch Weight*	850	910	940	950	1,120	1,180	1,150	1,210	1,210	1,150
Dry Axle Weight*	6,440	7,110	6,670	7,030	7,920	7,710	7,820	7,830	7,740	7,820
CCC (Cargo Carrying Capacity)	1,975	1,235	1,670	1,360	1,760	1,920	1,825	1,755	1,838	1,815
GVWR (Gross Vehicle Weight Rating)	9,265	9,255	9,280	9,340	10,800	10,810	10,815	10,795	10,788	10,785
Interior Height	82"	82"	82"	82"	82"	82"	82"	82"	82"	82"
Exterior Height with A/C	11' 4"	11' 4"	11' 4"	11' 4"	11' 6"	11' 6"	11' 6"	11' 6"	11' 6"	11' 6"
Exterior Width	96"	96"	96"	96"	96"	96"	96"	96"	96"	96"
Exterior Length**	31' 6"	34' 8"	33' 3"	35' 9"	36' 8"	36' 8"	37' 8"	37' 8"	38' 2"	37' 5"
Refrigerator (Cubic Feet)	10	10	10	10	10	10	10	10	10	10
Water Heater Cap. (On-Demand Tankless)	***	***	***	***	***	***	***	***	***	***
Fresh Water Capacity (Gallon)	45	45	45	45	45	45	45	45	45	45
Black Water Capacity (Gallon)	32	32	32	32	32	32	32	64	32	32
Gray Water Capacity (Gallon)	64	64	64	32	64	32	64	64	32	32
LP Gas Capacity (Lbs.)	60	60	60	60	60	60	60	60	60	60
Furnace BTUs (1,000s)	30	30	30	30	30	30	30	30	30	30
Tire Size	15"	15"	15"	15"	15"	15"	15"	15"	15"	15"
Awning	16'	14'	20'	20'	16'/10' 4"	16'/10' 4"	15'/10' 4"	20'	12'/10' 4"	14'/10' 4"

\*This weight reflects the rolling average unit weight for each model. Your trailer weight will vary according to optional equipment.

\*\*Exterior length is measured from rear of bumper to leading edge of coupler.

\*\*\*Infinite supply.

## 1.5 ELITE PACKAGE

200W Solar Panel w/30A Controller
JBL Sound Bar
JBL Flip Bluetooth Speaker (Exterior)
Glass Shower Door
Blackout Roller Shades
Tankless Water Heater
Extended Grab Handle
Laminated Rear Wall
Modern Farm House Design w/Hand Glazed Cabinet Doors
Pre-Wired Tire Monitor System
King WiFi Prep
CPAP/Cell Phone Shelves in Bedroom
Entry Door w/Clearview Window
Large Single Bowl Stainless Steel Undermount Sink w/Cover/Dish Drying Racks
Pull-Down Spring Faucet
Western Pine Board Accent Walls
40"/50" Smart TV w/Swing Arm (VBF)
Venture Level Mate Pro System
Tucked Bumper w/2" Accessory Hitch
Heirloom Comforter w/Pillow Package
Oval Stainless Steel Bath Sink
Serta Memory Foam Mattress
Venture Control Center w/Bluetooth Connectivity
10 CU FT 12V Refrigerator
Venture Cutting Board
Furrion 21" Oven
Live Edge Accent Tops
Barn Door Passage Doors
Residential Furniture Upgrade
Motion-Activated Bathroom Nightlight
Rear Back-up Lights
Pet Defender Screen Protector
Fiberglass Slideout Endwalls
Beauflor Slideout Floors (no carpet)

## WEATHER-SHIELD PACKAGE (MANDATORY)

Forced-Air Heated & Enclosed Underbelly
Enclosed, Heated Gate Valves
Residential Fiberglass Insulation
Radiant Foil Insulation
Radiant Foil Insulation Wrapped Tanks
Reflective PVC Roof Membrane w/Limited Lifetime Warranty
High-Output A/C Ducting
Utility Docking Station
RV Airflow provides 40% more airflow for your A/C

## SPORTTREK TOURING PACKAGE (MANDATORY)

Azdel Laminated Sidewalls
Automotive Panoramic Front Window
Window Seat (most models)
Friction Hinge Entry Door
Interior Entry Door Motion Light
Motion Activated Pass-thru Storage Light
5/8" Tongue & Groove Plywood Floor Decking
NXG Huck Bolt Frame
EZ Lube Hubs
Undermount Spare Tire
Rear Ladder
Walkable Roof
Hot & Cold Outside Shower
Black Tank Flush System
Furrion Marine Grade Detachable Power Cord
Prewired for Backup Camera
Stabilizer Accent Lighting
15K BTU A/C
50A Service w/2nd A/C Prep
LED Lighted Power Awning
Keyed Alike Key System
Battery Disconnect
3-Burner Hi-Output Range w/Flush-Mount Glass Cover
Microwave w/Turn Table
Safe-Tek Hidden Storage w/Charging Center
82" Interior Ceiling
Tru Flush-Floor Main Slideouts, 72" Slideout Height
Full-Extension Ball Bearing Drawer Guides

## EXTERIOR LUXURY PACKAGE (MANDATORY)

Painted Fiberglass Front Cap With Integrated LED Light
Upgraded Graphics Package
BAL 5.1 Lighted Power Tongue Jack & Independent Electric Stabilizer Jacks
Tinted Frameless Windows
Slam-Latch Baggage Doors w/Magnetic Catches

Blake Décor

Aluminum Flip-up Solid Step
Venture Bottle Opener/Dog Tie Down
30# LP Tanks w/Cover
Screen Shot Screen Door

## INTERIOR LUXURY PACKAGE (MANDATORY)

Solid Surface Kitchen Countertops
Designer Valances w/Roller Shades
Solid Hardwood Cabinet Doors & Drawer Faces
Motion Activated Interior Entry Light
Beauflor Wood Plank Flooring w/7-yr Limited Warranty
Porcelain Foot-Flush Toilet
Deluxe Tri-Fold Sofa & Theater Seats (VBF), King Bed Master Suite (Queen 343VBH/VIB)
Washer & Dryer Prep (VBF)
Heat & Message in Theater Seating (VBF)
(2) 30" Frameless Fireplaces

## OPTIONS

Goodyear Tire Upgrade (Mandatory)
Booth Dinette (Std. on 272VRK & Bunk Models)
Table, (2) Chairs/Bench (Bunks & 272VRK only, STD on other models)
2nd A/C (Ducted 13.5K in Master Bedroom)
1,200 Watt Inverter
*Venture Level Mate Pro System
*40" Smart TV w/Swing Arm Bracket (272, 292, 302, 312, 343VBH/VIB)
*50" Smart TV w/Swing Arm Bracket (333s, 336, 343VIK)
King "U" Sofa (Super-Slide Models only)
Theater Seating IPO Tri-Fold (272, 292, 302, 312VBH, 343VBH, 343VIB)
Furrion Observation/Backup Camera
MaxxAir Fan in Master Br. (N/A w/2nd A/C)
RVIA Seal · RVIA/QAI/Canadian Standard
State Seal (NE & WA)
*Included in 1.5 Elite Package

Doe Décor

# EXTERIOR FEATURES



All SportTrek Tourings feature a solid flip-up step and friction-hinged entry door with Screen Shot screen door.



This Campfire Café outside kitchen includes large refrigerator, pullout griddle, sink with hot and cold water and tons of storage areas. It's standard on the 333VFK, 333VMI, 336VRK and the 343VIK.



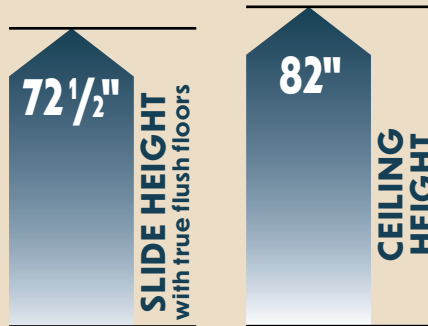
4 power stabilizer jacks, each with its own independent motor.



2-Inch accessory hitch is integrated into the frame.



Bluetooth-controlled monitoring panel. Control your slides, lights, awnings and more right from your phone.



LevelMate PRO lets you level your unit on the first try! This feature calculates and displays the height required to achieve a perfectly level position.



SportTrek Touring's Weather Shield features a radiant foil barrier, forced heat, enclosed underbelly, and enclosed gate valves.



SPORTTREK  
TOURING  
CONSTRUCTION



985 N 900 W | Shipshewana, IN 46565 | [www.venture-rv.com](http://www.venture-rv.com)

Due to continual research and advances, manufacturer reserves the right to change specifications, design, price, and equipment without notice, and assumes no responsibility for any error in this literature. Some items shown are not included as standard or optional equipment.

©2024 Venture | 4/15/24 | web